

# Chapter 5 - Windows Layouts

This chapter is for ShareScope Plus and Pro users only. We recommend that you read the preceding chapter – **Navigation** – first.

## What you will learn in this chapter:

- About window layouts.
- How to identify the contents of a window.
- How to create a new window.
- How to move and resize windows.
- How to link windows to other windows.
- How to drag windows outside ShareScope onto another screen (float windows)
- How to create additional layouts.
- How to rename and copy window layouts.
- How to lock windows and layouts.
- How to save and restore window layouts.
- How to reset window layouts to the default settings.

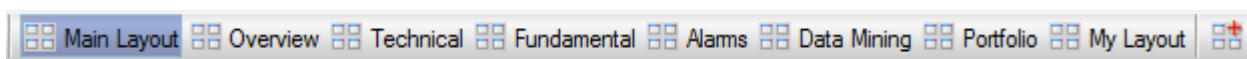
## Windows in ShareScope Plus & Pro

ShareScope Plus & Pro have a multi-window format which enables you to display multiple views simultaneously. The arrangement of windows on the ShareScope screen is called a **Window Layout** and can consist of one or more windows. You can customise the layout to contain the information you are interested in.

The layout on the screen when you first open the program is called **Main layout** and consists of a List, two Intraday Graphs, a News window and a Details window. ShareScope is provided with seven preset layouts and five blank layouts you can easily switch between. You don't need to keep the preset layouts – we suggest that you customise them to suit your requirements.

You can create additional window layouts if you need more than the original twelve.

There are buttons on the toolbar at the top of the ShareScope screen that represent the 7 preset layouts. The 8<sup>th</sup> button, My Layout, is one of the blank layouts.



Try clicking on the different layout buttons to see how the windows are arranged and the information they contain is presented

Below are two examples of more sophisticated window layouts:



Within each layout, the windows can be resized, moved, maximised and minimised. You can also add new windows, change the contents of a window, or remove windows.

You can use ShareScope across multiple screens and/or you can “float” windows so that they can be dragged outside of the main ShareScope application window.

### The window title bar

If you are not sure what a window contains – look at its title bar:

No.	Name	Mid/Close %	Mid/Close	Spread %	Yield
1	Nostrum Oil & Gas PLC	▲ 6.12	563.5p	3.1943	3.28
2	Crest Nicholson Holdings Ltd	▲ 3.75	567p	0.1764	2.62
3	Vedanta Resources PLC	▲ 3.35	616.5p	0.1622	6.76
4	Mitchells & Butlers PLC	▲ 3.48	468.45p	0.1067	
5	Cairn Energy PLC	▲ 2.76	190.2p	0.1052	
6	Sainsbury (J) PLC	▲ 2.52	266.85p	0.0375	5.07
7	Redrow PLC	▲ 2.52	447.3p	0.0894	0.69
8	Bovis Homes Group PLC	▲ 2.44	1,152.5p	0.2603	3.11
9	Just Retirement Group PLC	▲ 2.43	177p	0.339	1.27
10	Jardine Lloyd Thompson Group PL	▲ 2.40	1,043.5p	0.0958	2.84
11	Spire Healthcare Group PLC	▲ 2.51	356.75p	0.0841	0.52
12	SOCO International PLC	▲ 2.41	184.65p	0.2708	5.55
13	Tesco PLC	▲ 2.34	216.4p	0.0462	

In this example:

- 01** this was the first window created in this layout.
- List: FTSE 350** this is the currently selected list of instruments in this window.
- All sectors** this list is not currently filtered by sector.
- Main View** Main View is the table setting that has been applied to this window.
- (Linked)** this window is linked to another.

### The Active Window

In a multi-window layout, any actions you perform will apply to the active (or selected) window. To make a window the active window, simply click on it. The active window will have a darker title bar and border.

The screenshot displays the ShareScope Pro interface with several windows open:

- Top Left:** A table listing various stocks with columns for No., Name, Mid/Close %, Mid/Close, Spread %, and Yield. The 'Haynes Publishing Group PLC' entry is highlighted.
- Top Right:** A candlestick chart for Haynes Publishing Group PLC, showing price movement from 11/12/14 to 22/6/15.
- Bottom Left:** A 5-minute candlestick chart for the FTSE 100 index, showing price fluctuations between 8:00 and 12:00.
- Bottom Center/Right:** A detailed financial data window for Haynes Publishing Group PLC, including key metrics like Capitalization (£19.6m), Market (5.12%), Sector (6.07%), and various ratios like P/E, Dividend, and ROE.

In the example above, the active window has a red frame. You can customise the active window frame colour.

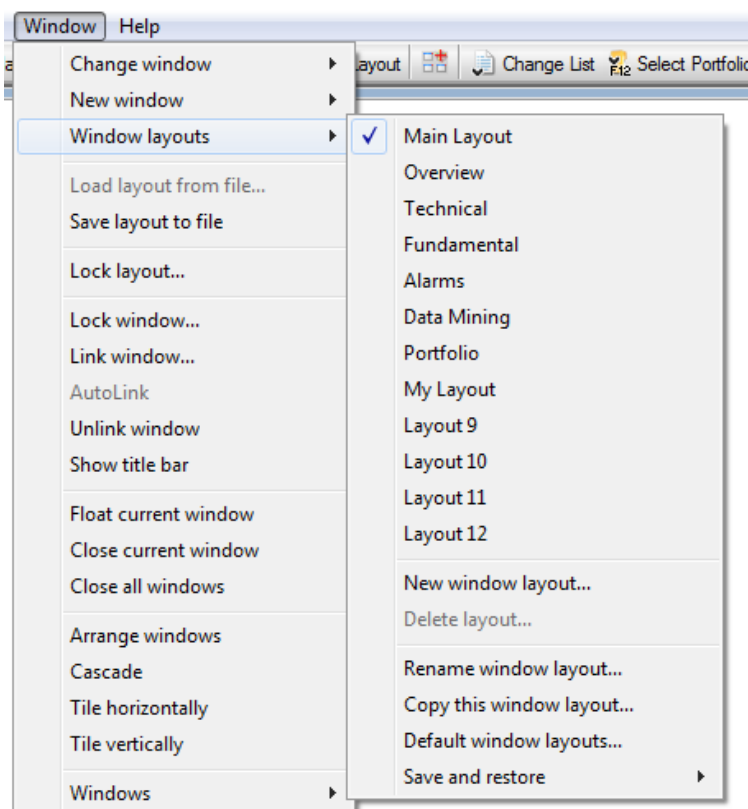
Click on the **Tools** menu and then **Options**. On the **Layouts** tab look for the section called **Captionless windows**.

The first option, **Active window frame colour**, allows you to set the colour of the window border if the title bar has been hidden.

The second option, **Use for all active windows**, will use the **Active window frame colour** for the current window regardless of whether its title bar can be seen or not.

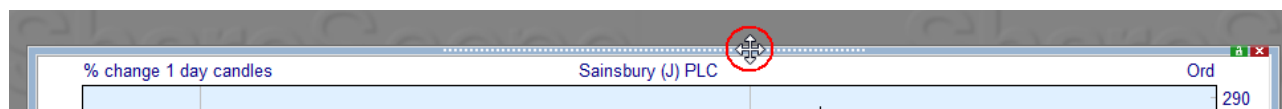
### Customising a window layout

Straightaway you'll probably want to customise one or more window layouts to suit your requirements. As you have seen, there are buttons for the first eight window layouts on the toolbar at the top of the ShareScope window. If you wish to start creating your own layout you can click on the My Layout button. Alternatively you can access all the available Window layouts: click on the **Window** menu and then **Window layouts**:



### Moving and resizing a window

Windows can be moved around the ShareScope screen by dragging them by their title bar. If the title bar has been hidden then there are a series of dots in the centre of the border at the top of the window. The mouse will change to a four-way arrow and you can then drag the window around the screen.



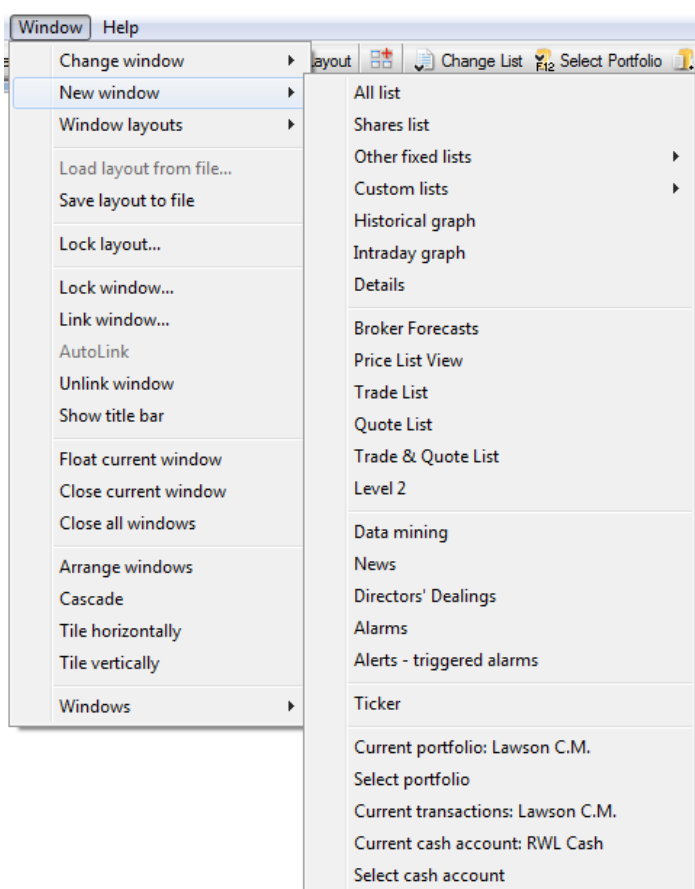
You can resize windows by placing the mouse cursor at the edge of the window until the cursor changes to a multi-directional arrow and then dragging the window in to the desired size and shape.

The sides of a window allow you to resize either the horizontal or vertical aspect while the corners of the window allow you to resize both at the same time.



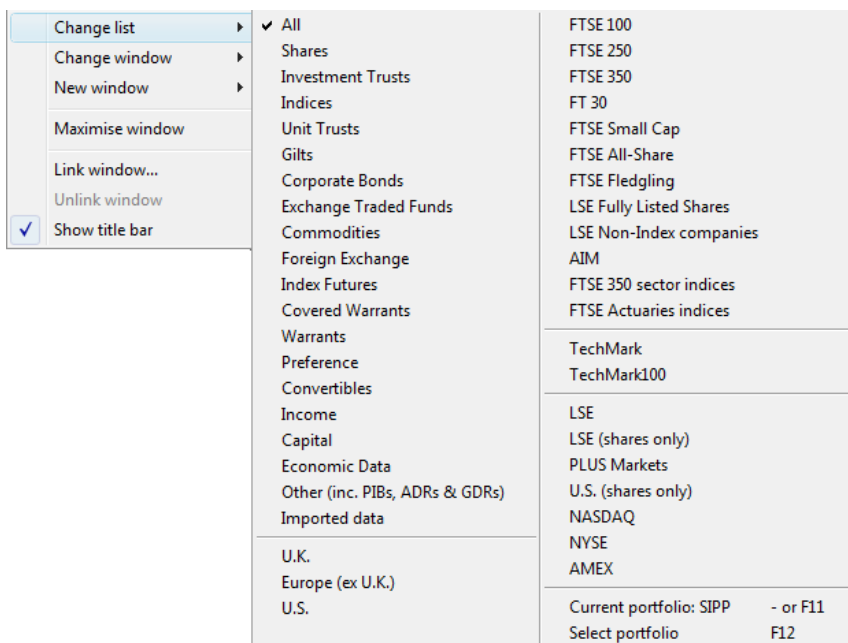
### Create a New Window

To add a new window to your layout, click on the **Window** menu and then the **New Window** sub menu. Select the type of view you wish to display. Notice that there isn't an option for a **List** view. Instead, there are options for the **All list** (all instruments), **Shares list** (all shares) and **Other fixed list** (which is a submenu of list of specific data sets (e.g. FTSE 350, Foreign Exchange, Unit Trusts...)).



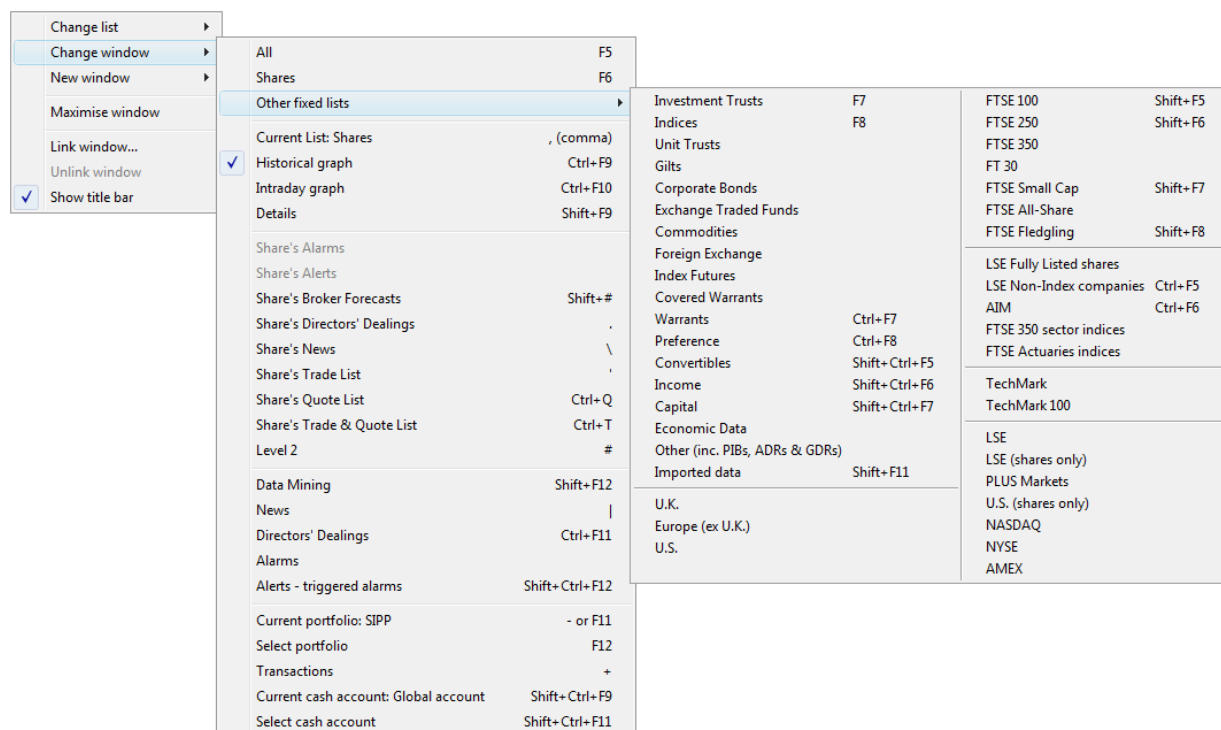
### Change the List in a List window

To change the list of instruments in a List window, click on the **Window** menu (or right-click in the window's title bar) and select **Change list**. Select from the submenu of fixed lists shown below.



### Change the window view

In any window, you can change the view. Click on the **Window** menu (or right-click in the window's title bar) and select **Change window**. Select the required view from the submenu (shown below):



The options in the **Change window** submenu which are prefixed with “**Share's ...**” will load data specific to the currently selected instrument. For example, to display a share's news you would select **Share's News**; to display all news stories, you would select **News**. You will notice that there is no specific option for **List**. Instead, there are options for **All** (all instruments), **Shares** (all shares) or **Other fixed lists** (which displays a submenu of all ShareScope's lists).



## Remove a window

To close a window and remove it from your layout either click the cross at the top right hand corner of a window or select the window and from the **Window** main menu select **Close current window**.

## Remove all windows

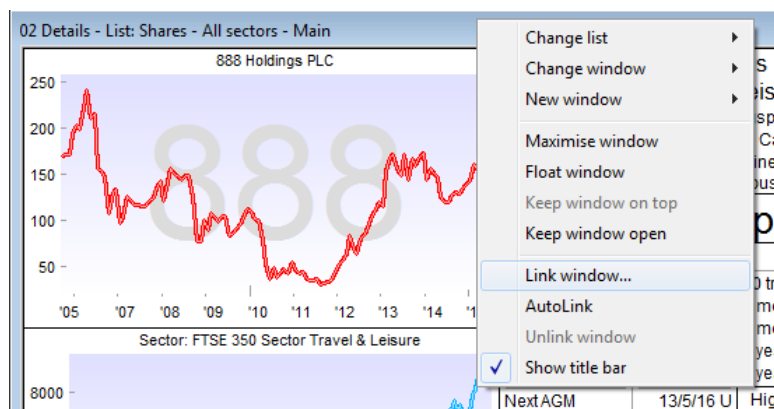
To close all windows - leaving a blank layout – click on the **Window** menu and select **Close all windows**.

## Linking windows

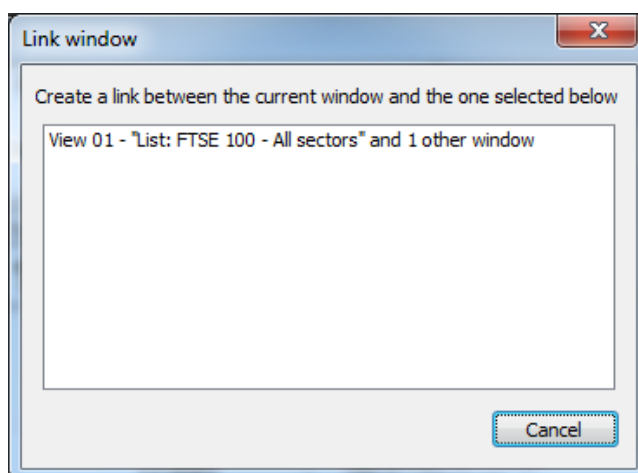
You can link windows together so that information for the same instrument is displayed simultaneously in any number of windows in the same layout. Once one or more windows have been linked, changing the instrument in any of the windows will cause the others to change automatically. You can link as many windows together as you wish, and have multiple sets of linked windows.

Most windows in ShareScope can be linked together. However, in a group of linked windows, list and portfolio windows will show the same list or portfolio. This enables you to display lists using two different tables – for example, technical in one window and fundamental in another. Note that you can't link two data mining windows together – as they will generate different lists of instruments.

To link a window, right click on the title bar of the window and select **Link window** from the context menu.



This will launch the **Link window** dialog. The dialog box contains a list of available windows to link to, by window title. In the example below, View 03 – “List: FTSE 100 – All sectors” is the available window, with 1 other window already currently linked to it. Double click on the window you wish to link to in the list to complete the linking.



The title bar of a linked window will include “(Linked)” at the end to indicate it is linked in to a set.

## Unlinking a Window

To unlink a window, right click on the window title bar and select **Unlink window**.

## Autolink windows

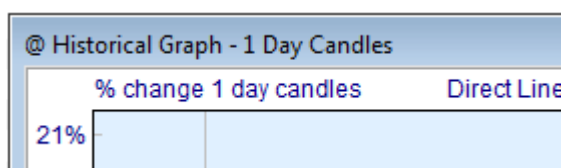
AutoLinking is an extension to Linking windows. Windows that show information for a single instrument (e.g. Historical Graph, Details) can be autolinked to several lists. The autolinked window will display information for the selected instrument in the current selected window.

For the purposes of autolinking, lists include News windows in which you could click on a story relating to a specific share and the Alarms window where can select an alarm has been set on a specific share.

Similarly, a Transactions or Cash Account window may be autolinked to multiple Portfolio windows. Here the autolinked window will display the transactions or cash account for the selected portfolio. If more than one cash account is attached to the portfolio, you can select them in sequence by right-clicking in the autolinked Cash Account window and selecting Next linked cash account.

To autolink a window to other windows, right-click in the window title bar (or on the window frame if the title bar is hidden) and select **AutoLink**. The window will be linked to all other relevant windows in the layout. It will initially display the instrument selected in the window that was active last.

Autolinked windows display an @ symbol before the window title instead of a window number (e.g. @ Historical Graph – 1 Day Candles).



Note:

1. Windows may be linked or autolinked but not both.
2. You can't autolink List, Portfolio or Data Mining windows. For example, if you have three List windows and one Graph window in a layout, it is the Graph window that must be autolinked.
3. If an instrument is selected for which no relevant information can be displayed in the autolinked window (e.g. a portfolio which has no attached cash account), then the autolinked window will not change.
4. Windows such as News or Alarms, which can show either all items or those relating to a single share, will always show only the share's items when auto-linked.
5. Searching for an instrument in an autolinked window will search the window that it is currently autolinked to e.g. the last selected list window.

## Floating windows

Floating windows are windows that you can "detach" from the ShareScope program. That is, you can move them outside of the program window and on to other screens for example.

To enable floating windows:

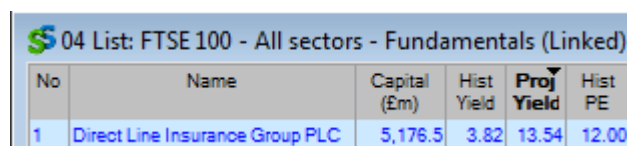
1. Go the **Tools** menu and click on **Options**.
2. Click on the **General** tab and then click on the Multi-screen and floating windows **Set options** button.
3. Click on **Enable floating windows**.
4. Optionally, click on **Float new windows by default** if you want all new windows to be "floating".



To float an existing window, right-click in the title bar of the window and select **Float window**. If this option already has a tick next to it then the window is already floating.

To move the window, click and drag the window's title bar - or on the "gripper" (dotted line) if you have hidden the window's title bar.

Floating windows have a ShareScope icon on the left-hand side of the title bar (unless you have hidden the title bar). If you have hidden the title bar of the window, the dotted line (gripper) at the top of the window will change to a double dotted line. Each floating window will also appear on your computer's task bar.




No	Name	Capital (€m)	Hist Yield	Proj Yield	Hist PE	Proj PE
1	Direct Line Insurance Group PLC	5,176.5	3.82	13.54	12.00	

To unfloat a window, simply select the **Float window** option again (the tick will be removed). You can also do this by right-clicking on the task bar icon and selecting **Dock window** (in Windows XP and Vista). With Windows 7, move your mouse over the ShareScope task bar button. Then right-click on the image of the floating window and select **Dock window**.

**Keep window on top** - This functionality enables you to ensure that a specific window always remains on top of other applications. Right-click in the window's title bar and select **Keep on top**. A tick will appear next to the option. To disable this feature, simply select the option again (the tick will be removed).

**Keep window open** - By default, floating windows will be linked to the current window layout. However, you can configure floating windows to be independent of the window layout. For example, you might want a market news window to be open at all times. Right-click on the window's title bar (or top border) and select **Keep window open**. Such windows can be identified by their narrow green border and inverted colouring on the close window icon (cross).



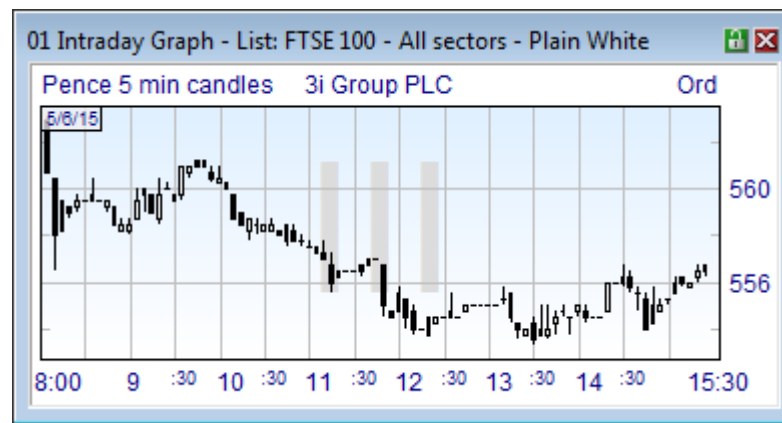
No	Name	Capital (€m)	Hist Yield	Proj Yield	Hist PE	Proj PE
1	Direct Line Insurance Group PLC	5,176.5	3.82	13.54	12.00	15.01

Permanently open windows cannot be linked to normal windows.

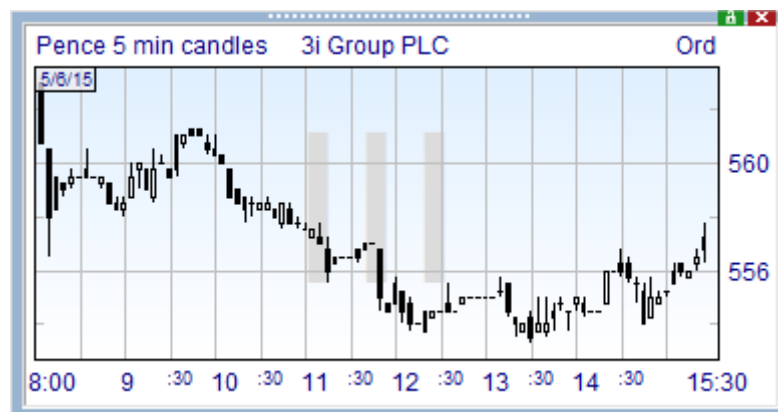
However, you can configure multiple windows to be permanently open and they can be linked together. This creates an additional floating layout. This layout can be locked using the **Lock** features (click on the green padlock in the window's title bar).

### Remove a window's title bar

Windows can have their title bars removed to save space in the ShareScope screen. To remove a title bar from a window, right click on the title bar and from the context menu that appears select **Show title bar**. While the title bar is enabled the option will appear with a tick preceding its name in the menu. To re-enable the title bar, right click on the border of a window and follow the same steps as above. The cursor will change to a directional-arrow when you're hovering over the window border.



With title bar displayed.

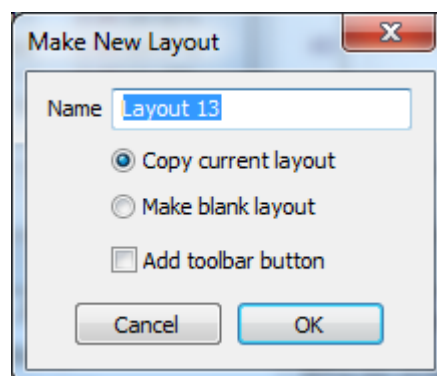


With title bar hidden.

## Window layouts

### Create additional layouts

You can either create a new blank layout or you can copy an existing layout. Go to the **Window** menu, then **Window layouts** and then **New window layout**.



You can choose **Make blank layout** or **Copy current layout**. You will be able to enter a descriptive name for the new layout. There is also an option to automatically add a button to the toolbar for the new layout. The button is added alongside the other Layout buttons.

### Rename a window layout

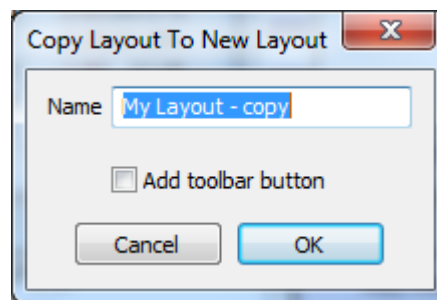
You may find it helpful to give each layout a descriptive name. Click on the Windows menu and then

Window layouts. Select **Rename window layout**. A dialog box will appear prompting you to change the name. The current layout name will be present to remind you which layout you are naming.

### Copying a window layout

You can also create a new layout based on an existing one by creating a copy. Note that you will need to copy the layout to a blank layout or overwrite an existing layout.

First select (display) the layout you wish to copy. Then click on the **Windows** menu and then **Window layouts**. Select **Copy this window layout**. The **Save layout to another location** dialog will appear. The layout which is currently active in the ShareScope screen will be greyed out. To select the layout that you wish to save to, select from the bulleted options. You can also specify a new name for the layout or use the default (usually the original name with 'copy' on the end).



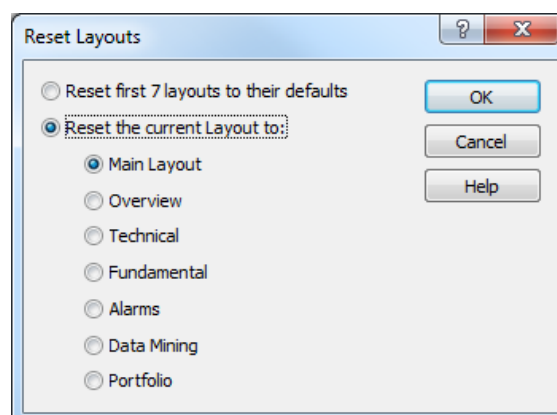
### Saving and Restoring Layouts

ShareScope automatically saves all layouts when you close the program. You can also save a layout manually. This is useful if you have your layout as you wish but want to create a point from which ShareScope can restore your layout if you want to experiment further. Once you have saved a layout, you can restore it to its original state after making any changes. Similarly using the restore option will revert a layout back to how it was when you started ShareScope, unless you have saved since. Save and restore options can be found under the **Window** main menu: **Windows layouts: Save and Restore** sub menu.

### Resetting a Preset Layout

If you have altered one of the preset layouts, you can restore it to the default configuration - as it was when you first installed ShareScope. In fact, you can reset any layout to one of the preset configurations.

First, display the layout that you want to reset. Next, click on **Windows**, then **Window layouts**, then **Default window layouts**. The following dialog will be displayed:



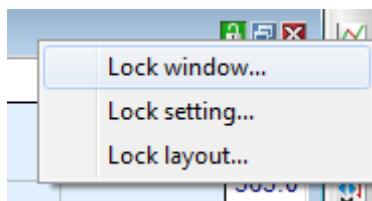
Select the first option to reset all layouts to their default configuration. Otherwise, select the preset layout that you want to apply to the current setting.

## Locking a Window or Layout

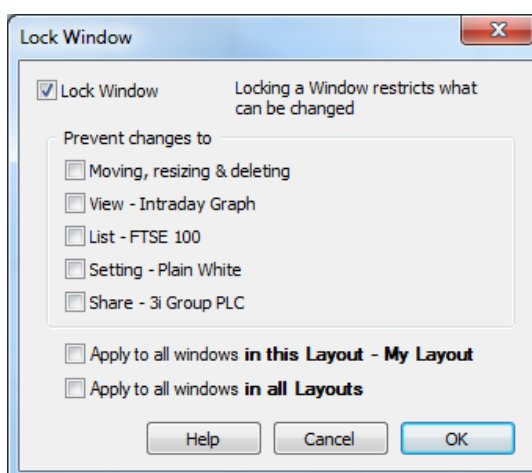
You can lock a window or layout in ShareScope to prevent accidental changes to your current configuration. Notice the padlock button in the top right corner of each window (next to the Close window button). A blue padlock button indicates no locking and a red padlock button indicates that at least one feature has been locked.

### Lock Window

Click on the Padlock icon in the top right hand corner of the window. If the window title bar has been removed, you can access the lock options from the Window menu. From the menu, select **Lock window**.



The Lock Windows dialog allows you to select options that will prevent changes to this window, and if you wish, all windows in the current layout or windows in all layouts.



First select the **Lock Window** tick box. Then select the options you require:

<b>Moving, resizing &amp; deleting</b>	The window cannot be moved, resized or deleted. You can still maximise and restore the window.
<b>View</b>	The view cannot be changed. I.e. If the current locked window displays a List View, this cannot be changed to another, like, for example the Graph View.
<b>List</b>	The underlying source-list cannot be changed.
<b>Setting / Table</b>	The setting or table applied to the window cannot be changed. I.e. you cannot select from the twelve settings or tables. You can however edit the current setting.
<b>Share</b>	The currently selected share cannot be changed using the keyboard arrow keys or space bar. You can only change the share using the <a href="#">Find a Share</a> dialog.

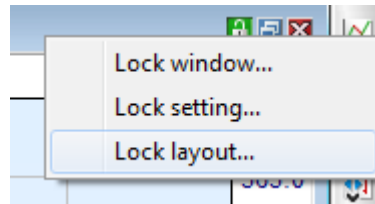
Then decide if you want to apply the locking options to all the windows in the current layout or all layouts. If you just want to lock the current window then leave these two options unticked.

To remove the lock, return to this dialog box and un-tick **Lock Window**.

### Lock Layout

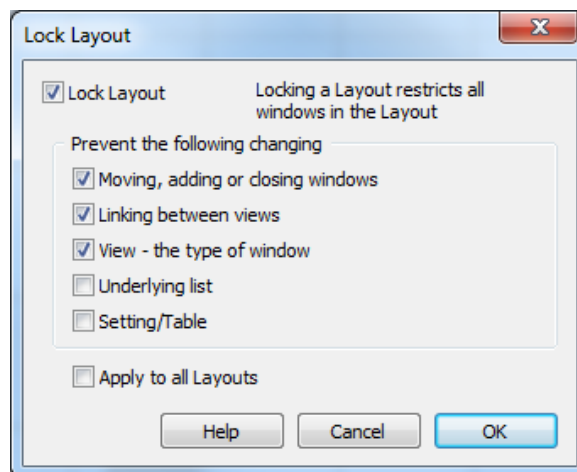
This option enables you to prevent accidental changes to any windows within the current layout or to any layouts.

Click on the **Padlock** icon in the top right hand corner of the window (next to the Close window button). If the window title bar has been removed, you can access the lock options from the **Window** menu.



From the menu, select **Lock layout**.

To prevent changes, first select the **Lock Layout** tick box. Then select what you would like to prevent being changed:



<b>Moving, adding or closing windows</b>	The windows in the layout are fixed. You can not move, resize, close or add a window to the layout.
<b>Linking between views</b>	The linking between windows can not be changed. You can not add, delete or modify existing window links.
<b>View - the type of window</b>	The view type in all windows in the layout can not be changed.
<b>Underlying list</b>	The underlying list in all windows can not be changed.
<b>Selected/Table</b>	The settings and tables used in all windows can not be changed.

To apply the changes to the current layout, **Click OK**. Alternatively to apply your selection to all layouts, tick **Apply to all layouts**.

To remove the lock, return to this dialog box and un-tick **Lock Layout**.

## Other Window Commands

You can also arrange windows on the screen using commands from the **window** main menu. These become useful when creating your own layouts, which will be explained later.

- **Arrange windows** – will arrange the windows on your screen to best fit the screen. Windows are expanded or reduced to fit the screen to reduce the amount of wasted screen space. The best way to use this is to roughly arrange windows on your screen so that they are approximately the size and in the position you require them.
- **Cascade** – will resize all windows to the same size and then cascade them. Useful for reviewing each window, one at a time, in detail.
- **Tile horizontally** – arrange windows to fit the ShareScope screen in rows. Windows will tend to be wider after this process.
- **Tile vertically** – arrange windows to fit the ShareScope screen in columns. Windows will tend to be taller after this process.