

# ShareScope

## **Alpesh's guide to using the Alpesh Patel Special Edition**



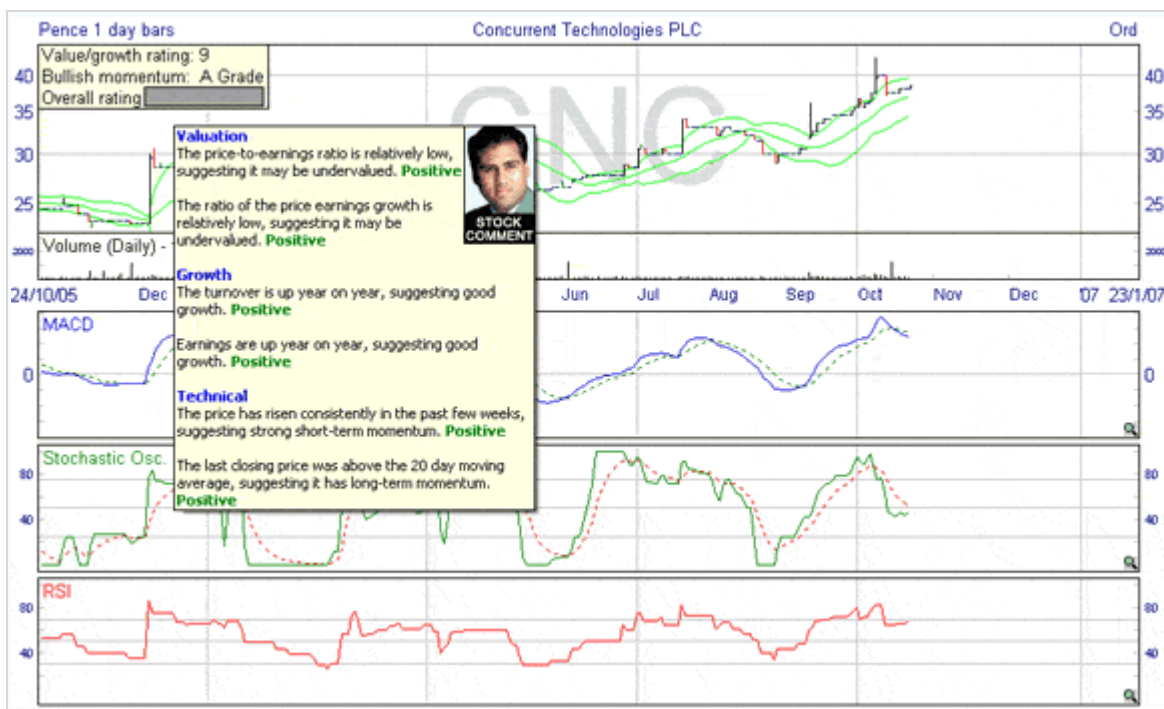
### ***Section 3***

#### ***How to use the Alpesh Ratings***

## Alpesh Ratings

These ratings are displayed in the top left corner of my radar screens (see example below) and as columns in the Alpesh Table. They enable you to further evaluate not just the stocks that appear in my filters but any stocks – such as your current holdings.

- **Alpesh Value/Growth Rating:** rates stocks from 1 to 10 (10 being best) on the value and growth criteria used for my Value/Growth filter. Note that the filter also looks for momentum as well which is why the filter does not include all the stocks with high Value/Growth ratings.
- **Alpesh Bullish Momentum Rating:** assesses stocks for bullish momentum, grading from A to C (A = Very Strong, B = Neutral, C = Weak or No Momentum). Note that this rating looks at momentum over a longer time frame than the Bullish Momentum filter. That is, the Bullish Momentum Rating grades highly stocks with good recent momentum whereas the filter looks for stocks that have just turned up.
- **Alpesh Overall Rating:** this is my overall rating for a stock based on valuation, growth and technical criteria. It is displayed as a rating histogram, rather like ShareScope's sector ranking.
- **Alpesh Stock Comment:** hover the cursor over the Alpesh Overall Rating histogram and my Stock Comment will appear explaining why I have given the stock its particular rating. See example below:



No.	Name	Alpesh value/growth rating	Alpesh bullish momentum rating	Alpesh overall rating	Close	Price% 2 trading days ago	Price% 5 trading days ago	Price% 2 weeks ago	Price% 3 months ago	Price% 6 months ago
1	Asfare Group PLC	9	A Grade		£1.06		▼ -2.30	▼ -2.30	▲ 15.85	▲ 37.22
2	Chieftain Group PLC	8	A Grade		£1.47		▲ 1.73	▲ 3.52	▲ 21.99	▲ 10.94
3	Compass Group PLC	7	A Grade		£2.79%	▲ 0.63	▲ 1.18	▲ 3.61	▲ 12.35	▲ 14.42
4	Concurrent Technologies PL	9	A Grade		38½p	▲ 1.32	▲ 2.67	▼ -2.53	▲ 16.67	▲ 27.27
5	Dairy Crest Group PLC	7	A Grade		£6.15	▲ 0.16		▲ 5.13	▲ 21.30	▲ 35.84
6	e2v technologies PLC	9	A Grade						▲ 19.85	▲ 28.34
7	First Derivatives PLC	9	A Grade						▲ 13.78	▲ 28.80
8	Go-Ahead Group (The) PLC	7	A Grade						▲ 12.00	▲ 9.21
9	Huveaux PLC	7	B Grade						▲ 22.16	▲ 11.48
10	International Power PLC	9	A Grade						▲ 18.82	▲ 10.16
11	Maintel Holdings PLC	8	A Grade						▲ 26.21	▲ 9.58
12	Maxima Holdings PLC	9	A Grade						▲ 23.78	▲ 12.76
13	Parkwood Holdings PLC	9	A Grade						▲ 19.23	▲ 15.53
14	SHL Group PLC	8	A Grade						▲ 38.17	▲ 12.60
15	Smith (DS) PLC	8	A Grade						▲ 17.94	▲ 12.09
16	Telford Homes PLC	9	A Grade						▲ 15.01	▲ 42.86
17	Trifast PLC	8	A Grade						▲ 20.09	▲ 23.96
18	UCM Group PLC	8	A Grade						▲ 55.56	▲ 50.54
19	Waterline Group PLC	9	A Grade						▲ 43.65	▲ 39.23

**Valuation**  
The price-to-earnings ratio is relatively low, suggesting it may be undervalued. **Positive**

**Growth**  
The turnover is up year on year, suggesting good growth. **Positive**

**Technical**  
The price has risen consistently in the past few weeks, suggesting strong short-term momentum. **Positive**

The last closing price was above the 20 day moving average, suggesting it has long-term momentum. **Positive**

**NOTE:** Alpesh's Stock Comment and Rating is generated directly from the data in ShareScope using Alpesh's algorithm. These will be updated dynamically when you update ShareScope.