

Chapter 15 - Alarms

What you will learn in this chapter:

- The types of alarm you can set.
- How to set up alarms.
- How to view triggered alarms.
- How to change the default settings for alarms.

Introduction

ShareScope provides a comprehensive alarms service.

- You can set alarms for price changes, technical signals, unscheduled auctions, news stories or keywords, and Directors' dealings. You can also set alarms on lines you draw on charts.
- You can set end-of-day alarms and, if you have ShareScope Plus or Pro, you can set intraday alarms.
- You can set an alarm for an individual instrument, for a list (e.g. FTSE 100) or for a portfolio.
- ShareScope Plus & Pro users can use ShareScript to create other types of alarm. See www.sharescript.co.uk for a library of existing alarms. Look under the Column scripts. Scripts that may be used as alarms are indicated as such (e.g. "Alarm – Donchian Cross").

ShareScope's alarms functionality is comprised of four main components:

- **Alarms wizard** – helps you easily and quickly add alarms.
- **Alarms view** – lets you view, modify and delete configured alarms.
- **Alerts view** – lets you view and delete alerts (triggered alarms).
- **Individual Alerts** – the ways in which ShareScope tells you that an alarm has been triggered. There are numerous ways in which ShareScope can do this.

Note: An **Alert** is the notification you get when an alarm is triggered.

Things you need to know about end-of-day alarms

- End-of-day alarms can be set up in all versions of ShareScope.
- By default, ShareScope checks end-of-day alarms when you do an end of day update (whenever you do it), i.e. it checks your alarms against the closing prices and news stories you have downloaded.
- By default, ShareScope checks price alarms against the closing price but you can choose to use the high and low prices instead.
- By default, ShareScope checks just the last day's prices and news. If you sometimes leave it several days in between updates you may prefer ShareScope to check back further.
- If you are a ShareScope Plus or Pro user, you can allow end-of-day **line alarms** to be triggered by intraday prices.
- If end-of-day alarms have been triggered, an **Alert Summary** will be displayed after the update process has completed. You can change this so that the **Alerts View** is displayed instead.

To view or change these default settings, go to the **Tools** menu, then **Options** and click on the **End-of-day alarms** tab. The options are covered in more detail in **Global Options** later in this chapter.







Things you need to know about intraday alarms

- Intraday alarms are only available in ShareScope Plus and Pro.
- ShareScope monitors the intraday price and news feeds and triggers an intraday alarm as soon as the conditions are met. Price-based intraday alarms only trigger once ShareScope has finished backfilling the intraday data for the current day. News-based alarms trigger as soon as a news story is received.
- For intraday price and technical alarms, ShareScope starts monitoring your alarms from market open. However, this can be a volatile period so you can choose to start alarm monitoring 15 minutes after open.
- There are 6 ways that you can receive an alert for a triggered alarm including: pop-up alert windows, emails and audible alerts. You choose your preferred method(s) when you set an alarm.

To view or change the default settings for intraday alarms, go to the **Tools** menu, then **Options** and click on the **Intraday alarms** tab. The options are covered in more detail in **Global Options** later in this chapter.

Alarm Toolbar Buttons

For users that expect to use alarms frequently, ShareScope includes the following toolbar buttons, all based around a bell motif:

	Add an alarm to the selected instrument.
	Add an alarm to the current list or portfolio.
	Show Alarms View. In ShareScope Plus & Pro, the Alarms View will be displayed in the current active window. Shift-click on the button to open in a new window.
	Show Alerts View. In ShareScope Plus & Pro, the Alarms View will be displayed in the current active window. Shift-click on the button to open in a new window.
	View alarms for this instrument or list.
	View triggered alerts for this item.

By default, the ShareScope Main Toolbar includes the **Show Alarms View** and **Show Alerts View** buttons. To add or remove any of these buttons, right-click in the Main toolbar and select **Customise Toolbars**. The alarm-related buttons can be found on the **Other** and **All** tabs. Note that once added to the toolbar, the **View Alarms** and **View Alerts** buttons will be greyed out (unavailable) if there are no alarms or alerts to view.

Alarm Types

The table below outlines the types of alarm you can set up in ShareScope.

Note: Intraday alarms are only available in ShareScope Plus/Pro.

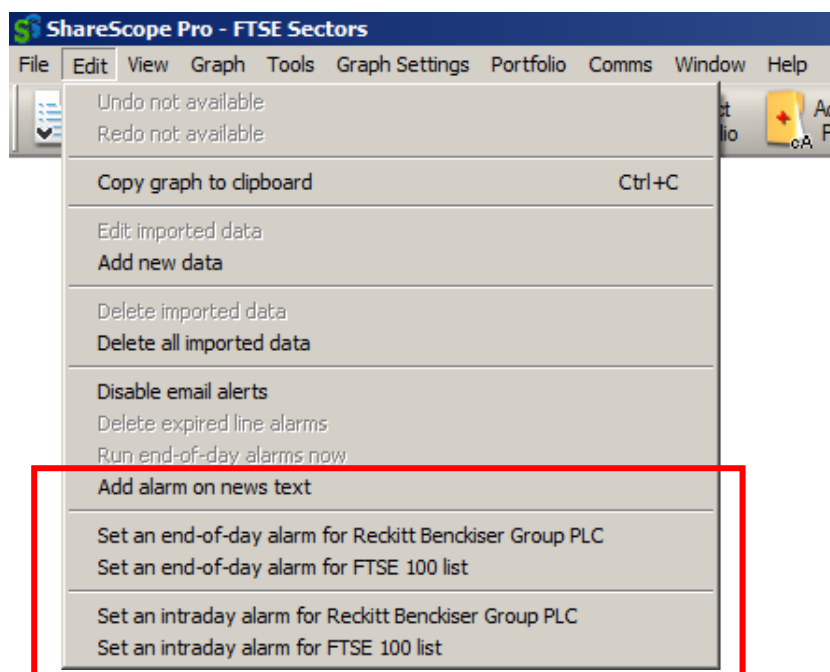
<i>Alarm type</i>	<i>Options</i>	<i>Target</i>	<i>EOD/Intraday</i>	<i>Variables</i>
Price	Rise/fall to a specified price	Instrument	EOD/Intraday	Set the price level.
	Rise/fall by a specified percentage	Instrument/List	EOD/Intraday	Specify whether the change should be measured from the open price or the previous day's close, or from a specified number of minutes, hours or days ago. These alarms may also be rebased automatically. That is, if a <i>5% price rise</i> alarm is set - as soon as the alarm is triggered, ShareScope will reset (rebase) the alarm from the trigger price.
	Gap up/gap down	Instrument/List	Intraday	Set an intraday alarm on the percentage change between the previous day's close and next day's open.
	Stop loss	Instrument	EOD/Intraday	Set the percentage change from the closing price on a specified date or the intraday price at a specified time.
	Unscheduled auctions	Instrument/List	Intraday	This alarm ignores scheduled auctions. You can set a global intraday alarm for scheduled auctions in Global Alarm Options .

	Line alarms	Graphs	EOD/Intraday	Set an alarm on any line drawn on a graph. Alerts you to support and resistance levels as well as breakouts from technical formations.
Moving average	Golden / Dead cross	Instrument/List	EOD/Intraday	Full control of the moving average parameters. To help avoid false buy/sell signals, you can specify a Trigger level for crosses which is a % measure of the difference (size of the gap) between the two MAs.
MACD	Crosses above/below the signal line	Instrument/List	EOD/Intraday	Full control of the MACD parameters
RSI	Crosses above the overbought line (Crosses above high)	Instrument/List	EOD/Intraday	Full control of the RSI parameters including the overbought level.
	Crosses below the oversold line (Crosses below low)	Instrument/List	EOD/Intraday	Full control of the RSI parameters including the oversold level.
Stochastic	Crosses above signal line (%K rises above %D)	Instrument/List	EOD/Intraday	Full control of the Stochastic parameters.
	Crosses below signal line (%K falls below %D)	Instrument/List	EOD/Intraday	Full control of the Stochastic parameters.
	Overbought level reached (%K rises above high level)	Instrument/List	EOD/Intraday	Full control of the Stochastic parameters including the overbought level.
	Oversold level reached (%K falls below low level)	Instrument/List	EOD/Intraday	Full control of the Stochastic parameters including the oversold level.
News	News for share	Instrument	EOD/Intraday	
	News for list	List	EOD/Intraday	Portfolios and watchlists may be selected as well as lists such as the FTSE 100.
	News text alarms	N/A	Intraday	Specify the word or phrase to search for.
	News for keyword	N/A	EOD/Intraday	Specify one or more keywords or phrases
Directors' dealings		Instrument/List	EOD	An alert will be triggered by a purchase or sale.
Date & time		Instrument	EOD/Intraday	Time is only available as an option for intraday alarms.
ShareScript	Above or below specified value	Instrument/List	EOD/Intraday	Select the ShareScript to be used and the value above or below which the alarm will be triggered.

Add Alarms (Alarms Wizard)

All alarm types, other than line alarms, are added using the **Alarms Wizard**. For line alarms, see **Add Line Alarms** later in this chapter. You'll also find more information about News text alarms in the **Add News Alarms** section.

As well as by using the Alarm toolbar buttons previously discussed, you can add an alarm via ShareScope's **Edit** menu:



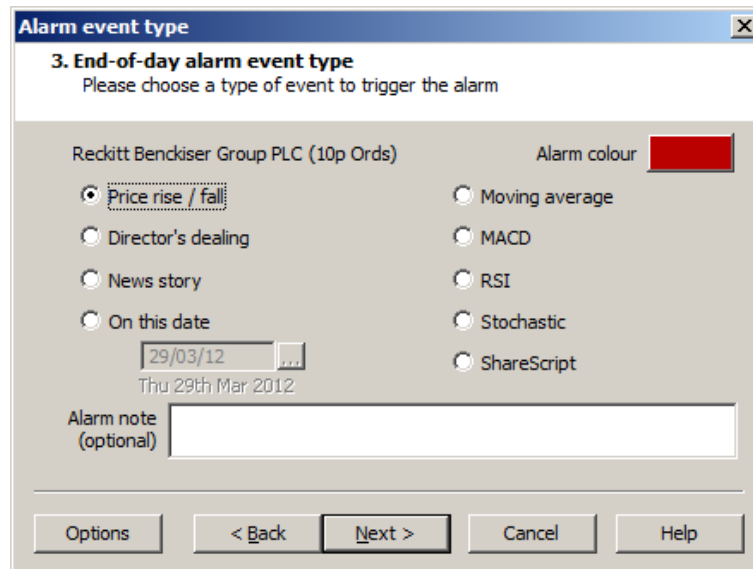
Not all these options are available in some views. If you right-click in the List view you will also find the option **Set alarm on share** on the context menu.

The options on the Edit menu will apply to the selected instrument and its underlying list (in the example above, Reckitt Benckiser and FTSE 100) but you can change these when the Wizard opens if required. The news text alarm is not specific to any instrument or list.

Whichever option you select, the Alarms Wizard will open. The Wizard leads you through the process step-by-step. The steps are shown in the table below although the exact number of steps and the options available will depend on the type of alarm you are adding:

Choose alarm type	End-of-day or intraday alarm.
Choose alarmed item	Specific instrument, list, portfolio, or news text search (Plus/Pro only).
Choose event type	Type of alarm. There may be several steps for some alarm types. For news text searches, enter the search string.
Choose alert notification	(Only shown for intraday alarms) Choose the ways ShareScope will alert you to triggered alarms.

Most of these steps are self-explanatory. Usually, some of the steps will have been completed for you. For example, if you selected **Set an end-of-day alarm for Reckitt Benckiser Group Plc**, the first two steps would be skipped and the Wizard would start at this step:

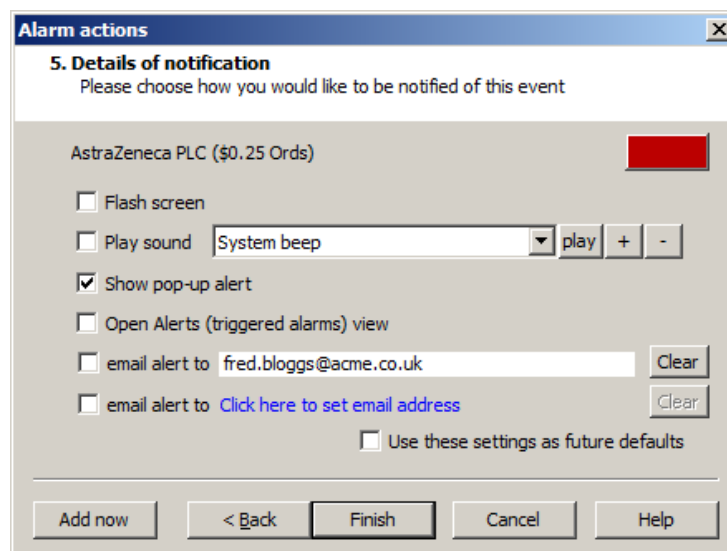


You can use the **Back** button to go back to the beginning of the process and change the details. For example, change the share name or list.

Default colours are assigned to each alarm type. Click on the **Alarm colour** box if you want to change the colour used for this alarm and its alerts.

The **Options** button displays the default alarm options that you can also access through the **Tools->Options** menu. These options are discussed in more detail in the **Global Alarm Options** section later in this chapter.

For intraday alarms, the final step of the Wizard enables you to choose the way(s) ShareScope will alert you if this alarm is triggered.



You can use as many of the alert notification methods as you like. You can also set your choices as the new defaults – which means they will be automatically selected in future. For more information on each alert notification method, see the **Alert Notification** section below.

The final step of the wizard includes an **Add now** button. Selecting this option, instead of **Finish**, will add the alarm but leave the wizard open so that you can add further alarms. Note this feature does not appear when the wizard has been opened to edit an alarm. Remember, you can use the **Back** button to go back to the beginning of the process.

Add News Alarms

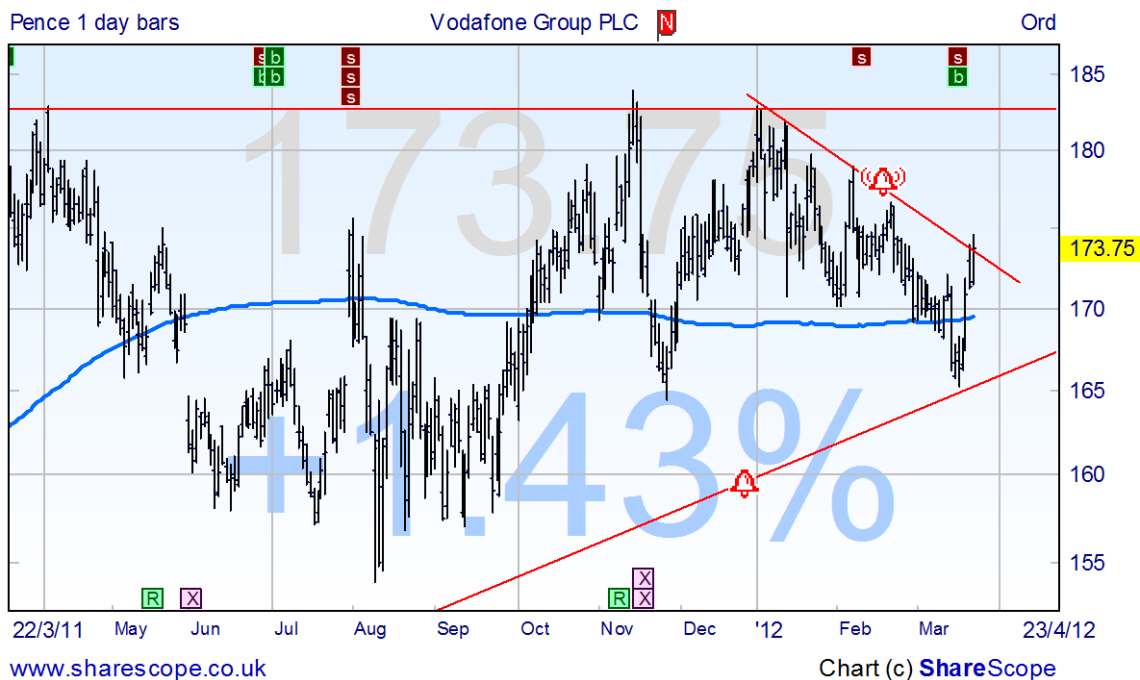
If you add a **News story alarm** for a share, list or portfolio, the alarm will be triggered if a relevant news story is received. If you add a **News text alarm**, the alarm will be triggered if specified words or phrases are detected in a news story. The search is for whole words and is case insensitive. There are several ways you can define the news text that you are looking for:

A B (space)	: Search for both A and B (in any order)
A, B (comma)	: Search for either A or B
A – B (space minus space)	: Search for A but exclude B
“A B” (quotes)	: Search for the exact phrase A B

News alarms do not need resetting; they will be triggered by each new story that meets the alarm conditions.

Add Line Alarms

You can add alarms on lines that you draw on price charts. This is ideal for support and resistance levels, price targets and stop loss levels. To add an alarm to a line, simply draw the line on the chart, right-click on the line and select **Alarm on line** from the context menu.



If you have ShareScope Plus or Pro, you can set line alarms on historical or intraday charts. Line alarms on historical charts can be triggered by intraday prices if you have the latest intraday price included on the chart. This can be added through the **Price** tab on the **Graph design** dialog.

Because line alarms are added without using the Alarm Wizard, the alert notification settings are defined by the global alarm options. See the **Alert Notification** and **Global Alarm Options** sections.

Line alarms will only trigger once. To reset a line alarm, either move the line away from the price or delete the alarm and then add it again.

Alert Notification

There are a number of ways in which ShareScope can alert you to triggered alarms.

- **End-of-day alarms** – by default, an **Alert Summary** is displayed after you have performed an update. Alternatively, you can choose to display the **Alerts view**. Read the **Global Alarm Options** section later in the chapter for how to change the default setting.
- **Intraday line alarms** – by default, a **pop-up window** is displayed. There are four other notification methods: **flash screen**, **play sound**, **show Alerts view** or **send email**. Read the **Global Alarm Options** section later in the chapter for how to change the default setting.
- **All other intraday alarms** - by default, a **pop-up window** is displayed. There are four other notification methods: **flash screen**, **play sound**, **show Alerts view** or **send email**. You can choose the required option(s) in the last step of the Alarms wizard.

Each Alarm Notification method is described in more detail below:

Flash Screen

This simply flashes the screen once. Go to the **Alerts View** for more information about the triggered alarm.

Play sound

The default sound is the System Beep but there are five sample sound files for you to choose from: Buzzer, Gunshot, Ding0, Ding1 and Ding2. You can use your own sound file as long as it is saved as a WAV file in the following directory:

C:/ShareScope/AlertSounds/

You can add new sound files from within the wizard. Click on the + button. Choose the file and click on Open. Give the sound a name that will appear in the drop-down list and click on OK.

Pop-up alerts

Pop-up alerts are small windows that appear containing details of the triggered alarm. By default, pop-ups open in the top right of the ShareScope screen. If you hold down the Shift key and drag a pop-up with the mouse it will change the default location. Pop-ups for some alarm types include special features:

- **News alarms:** pop-ups include a **Show story** button. Click on this button or double-click in the pop-up to display the story that triggered the alarm.
- **Line alarms:** double-click to open the instrument in a new window. You can choose which view is used (e.g. Intraday Graph).

Right-click on most pop-up alerts and you will get a menu of options including: **Delete the alert**, **Edit the alarm**, **Delete the alarm** and **Options**. There are a number of options that help you configure and control pop-up alerts. See **Global Alarm Options** later in this chapter for more details.

Pop-ups also include the following three buttons:

- **Cancel** – close the alert and don't reset the alarm.
- **Cancel All** – close all alerts and don't reset the alarms.
- **OK** – close the alert and reset the alarm.

Open Alerts (triggered alarms) view

See **Alerts View** below.

Send email to a specified mailbox

You can specify up to two email addresses for ShareScope to send an alert. This can be set up in the Alarm wizard or in the **Options** menu.

If you set an intraday alarm to send an email then ShareScope requires that you have email software installed on your computer. It will not use web based email. ShareScope will send an instruction to the installed email software and then that will send the email on ShareScope's behalf.

Examples of email software are Windows Live Mail, Microsoft Outlook or Mozilla Thunderbird. Most major internet email providers will have instructions about how to set these programs up to use their email services.

Alert Summary

This is the default method for end-of-day alarms. It appears after the update has completed if any alarms have been triggered. It is not available for intraday alarms. By default, ShareScope checks just the last day's prices and news. If you sometimes leave it several days in between updates you may prefer ShareScope to check back further. See **Global Alarm Options** for how to do this. From the Alert Summary you can open the Alerts View.

Alerts View

The **Alerts view** displays a list of alert notifications. Here you can not only review and delete alerts but delete the underlying alarms as well. You can also copy instruments with triggered alarms to portfolios.

No.	EPIC	Alert description	End-of-Day / Intraday	Triggered	Colour	New	Alarm Note	Alert Price
1	ZSTN	Close fell by 5.1% in 3 days	End-of-day	23/3/12		*		\$2.22
2	ZOLT	Close fell by 7.6% in 3 days	End-of-day	23/3/12		*		\$10.09
3	ZOL	Close fell by 7.0% in 3 days	End-of-day	23/3/12		*		4%p
4	ZNWAZ	Close fell by 17.2% in 3 days	End-of-day	23/3/12		*		48c
5	ZLTQ	Close fell by 11.1% in 3 days	End-of-day	23/3/12		*		\$5.79
6	ZLC	Close fell by 8.4% in 3 days	End-of-day	23/3/12		*		\$3.15
7	ZION	Close fell by 5.1% in 3 days	End-of-day	23/3/12		*		\$21.48
8	ZINC	Close fell by 9.4% in 3 days	End-of-day	23/3/12		*		\$11.30
9	ZEUS	Close fell by 5.6% in 3 days	End-of-day	23/3/12		*		\$23.76
10	ZAZA	Close fell by 5.4% in 3 days	End-of-day	23/3/12		*		\$3.50
11	YRCW	Close fell by 17.4% in 3 days	End-of-day	23/3/12		*		\$7.84

In ShareScope Gold, select **Alerts** from the **View** menu or click on the **Alerts View** toolbar button.

In Plus/Pro, use the **Change window** or **New window** options on the **View** menu to select **Alerts**. Alternatively, click on the **Alerts View** toolbar button to change the current active window or Shift-click on the same toolbar button to open a new window.

By default, the Alerts view lists all triggered alarms and includes the *type of alarm*, the *time or date the alarm was triggered*, and the *price of the instrument* (if appropriate) when the alarm was triggered. Right-click in the column headings of the Alerts view to add or delete columns.

Any end-of-day alarms generated since you last updated ShareScope, or any intraday alerts generated on the current day, are termed **new alerts**. These are displayed in a bold font and, if you have the **New** column

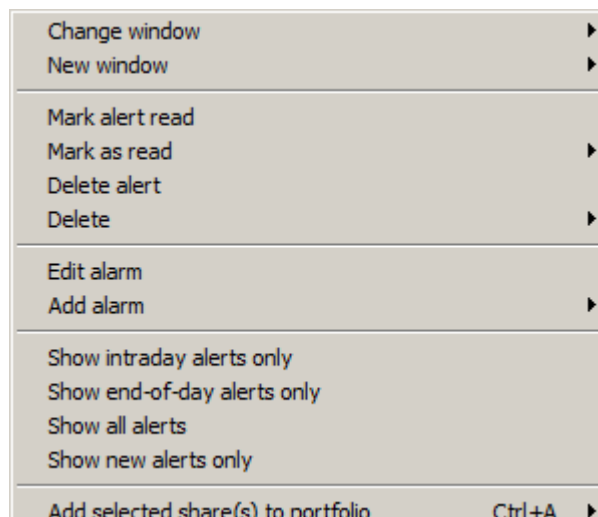
added to the window, an asterisk (*) will be present.

In the **Alert description** and **End of day/Intraday** columns, any end of day alarm that has been triggered by an intraday event will have an asterisk before it.

Double-click on an alert to see details of the triggered alarm:

- **For news alarms:** the story that triggered the alert will be displayed.
- **For line alarms:** a Graph screen will be displayed showing the alarmed line. Delete the line to delete that alarm or move the line away from the price to reset the alarm. Press ESC to return to the Alerts view.
- **For all other alarm types:** a pop-up window will be displayed with further details. To close this window, you must select one of the following options: **Delete alert**, **Delete alarm**, **Edit alarm** or **Acknowledge** (which retains both the alert and the alarm).

Right-click in the Alerts view to display the context menu:



Once you have double-clicked on a new alert it is considered “read” and will be displayed in normal text (apart from the instrument name). If you don't wish to read each alert, you can right-click in the window and use the various options to mark the selected alert(s) or all alerts as "read". Note that you can use the standard Windows multiple select commands in this view.

Similarly, you can delete the selected alert(s) or all alerts using the options on the context menu.

The **Delete old alerts** option enables you to delete all intraday alerts triggered before the current day and all end-of-day alerts triggered before the last update (i.e. alerts that are not “new”). This option will only appear if there are old alerts to be deleted.

There are options on the context menu to list just *end-of-day*, *intraday* or *new alerts*.

There are also options on the context menu for adding instruments from the Alerts view into a portfolio.

Alarms View

You can review the alarms you have set up in the **Alarm view**.

No.	Name	Alarm Type	Description	End-of-Day / Intraday	No. of alerts
1	BT Group PLC	Perc. fall	Mid falls 2.5% from close	Intraday	0
2	I - FTSE 100	Price rise	Mid above 5817	Intraday	1
3	Kingfisher PLC	Intraday Line	1 Intraday Line Alarm	Intraday	1
4	Vodafone Group PLC	End-of-day Lines	2 End-of-day Line Alarms	End-of-day	2
5	Xstrata PLC	Perc. fall	Mid falls 2.5% from close	Intraday	0
6	Xstrata PLC	Perc. fall	Mid falls 2.5% from close	Intraday	0
7	List: Shares	Perc. fall	Close falls 5% in 3 days	End-of-day	836
8	List: FTSE 100	News	News alarm	Intraday	21

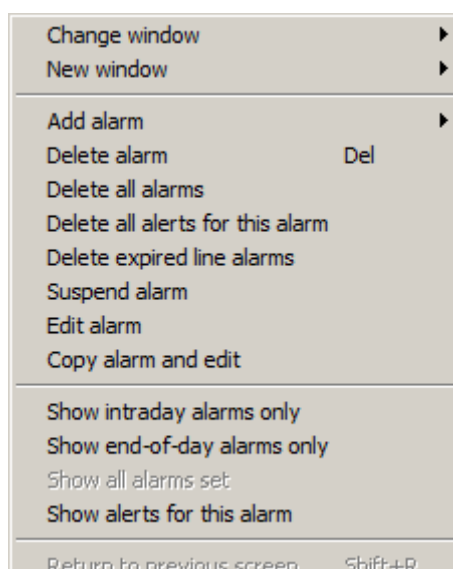
In ShareScope Gold, select **Alarms** from the **View** menu or click on the **Alarms View** toolbar button.

In Plus/Pro, use the **Change window** or **New window** options on the **View** menu to select **Alarms**. Alternatively, click on the **Alarms View** toolbar button to change the current active window or Shift-click on the same toolbar button to open a new window.

If you just want to view the alarms set for the selected instrument, right-click in the window and select **Shares alarms** from the context menu. There are two other ways to do this: you can click on the **View alarms for this item** toolbar button or you can right-click in the List, Graph or Details views and select **Share's Alarms** from the context menu. In ShareScope Plus and Pro these latter two options will display the share's alarms in the active window.

By default, the Alarm view includes the following information: *name of instrument or list, type of alarm, description, whether it is intraday or end-of-day, and number of alerts generated*. Like all lists in ShareScope, you can add/remove columns by right-clicking in the column headings.

Right-click in the middle of the window to display the options specific to the Alarms view:

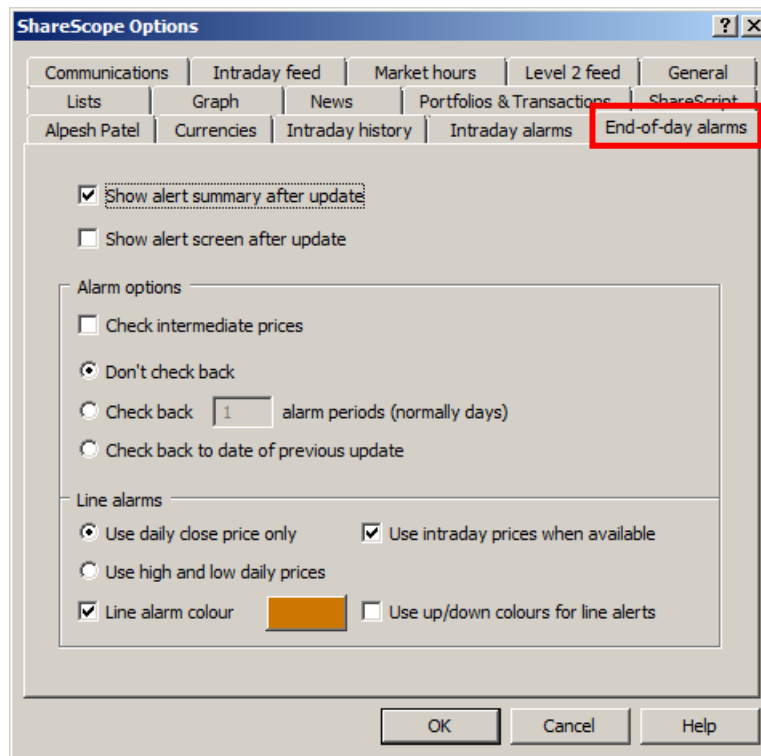


- **Add alarm** - this option will invoke the alarm wizard. Notice on the last page of the wizard there is an **Add now** button. This adds the new alarm but keeps the wizard open so that you can create further alarms.
- **Delete alarm** - deletes the selected alarm and any alerts. ShareScope will ask you to confirm the deletion.
- **Delete all alarms** – you will be asked to confirm the deletion.
- **Delete all alerts for this alarm** – self-explanatory. You will be asked to confirm the deletions .
- **Delete expired line alarms** - This deletes all line alarms that have been triggered. ShareScope will warn you how many alarms will be deleted and asks you to confirm the action.
- **Suspend alarm** - An alarm can remain set but be prevented from triggering by choosing this option. Its entry in the Alarm view will then be greyed out. To reinstate it, select **Enable alarm**. Timer and line alarms cannot be suspended in this way, and timer and stop-loss alarms once triggered are disabled and cannot be re-enabled. An alarm column, the 'On/Off' column, may be added which shows the current status for each alarm. Double-clicking an entry in this column changes its status between enabled ('On') and suspended ('Off').
- **Edit alarm** - Use this option to edit the selected alarm. For all alarm types except line alarms, the wizard will be opened. Make the required changes and then select **Finish** to close the wizard. For line alarms, a simplified graph view will be displayed so that you can view/edit the lines on which you have set alarms. Make the required changes and press ESC to return to the Alarm view. Double-clicking on a line alarm is a shortcut for menu option.
- **Copy alarm and edit** - To save time you can copy existing alarms and edit them. For example you may wish to copy a Stochastic alarm and set it for a different instrument. Selecting this option will open the wizard.
- **Show intraday alarms only** – hides the end-of-day alarms from the list.
- **Show end-of-day alarms only** – hides the intraday alarms from the list.
- **Show all alarms set** – only available if you have chosen to view the alarms for a specific instrument; this option will list all alarms set.
- **Show alerts for this alarm** – changes to the Alerts view to show the alerts for the currently selected alarm. This option will be greyed out if the alarm hasn't been triggered.

Global Alarm Options

You can also review and/or change the global settings for ShareScope alarms through the **Options** button on the wizard dialog or via **Options** on the Tools menu. There are different options for intraday and end-of-day alarms. Intraday alarms are only available in ShareScope Plus and Pro.

End-of-day Alarm Options



- **Show alert summary after update** – the Alert Summary lists the number of triggered alarms of each type. It will be displayed even if no alarms have been triggered. You can click through to the Alert View from the Summary if required.
- **Show alerts view after update** – select this option to display the full Alerts view as well as or instead of the Alert summary. From here you can edit and delete alerts.
- **Check intermediate prices** – use this option if you don't update ShareScope every day. It checks to see if your alarms have been triggered during a defined period. You can either set the number of periods (normally days) to check back, or check back to the date of the last update

Note: The check back period is normally days, but for Technical Analysis (Moving average, MACD, RSI and Stochastic) alarms the interval length (period) can be changed to 1,2,3,4,5 days, 1,2,3,4 weeks or 1 Month. In which case the check back is a multiple of this period rather than being days.

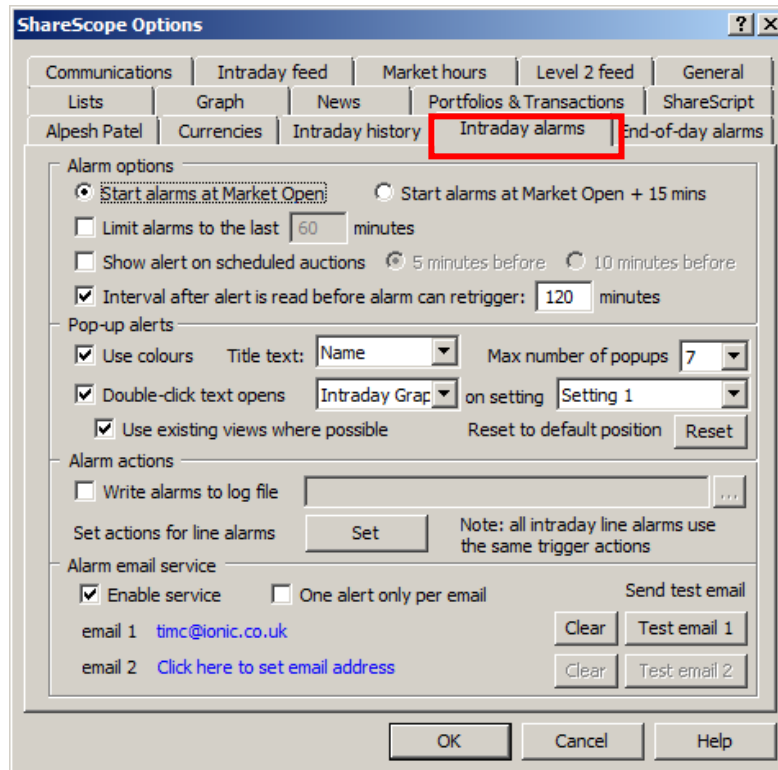
For example, if you set an alarm to check for a price rise to 150p, selecting to **Check back over n days** would cause the alarm to be triggered if the share breached that limit on any day in the last n days.

Similarly, for an alarm '10% fall over 5 days', ShareScope would look for this percentage fall over any 5 day period within the last n days.

- **Use daily close price only** - select this option if you want line alarms to be triggered only by the closing price.
- **Use daily high and low prices** - by default, ShareScope checks closing prices to see if end-of-day line alarms have been triggered. You may be happy with this if you consider that a line breached by just a high or low price is not a significant breach. However, you will need to bear this in mind if setting line alarms on OHLC charts as a visible breach of the line may not trigger the alarm. If you want to be alerted to ANY breach of the line, use the **Use daily high and low prices** option.
- **Use intraday prices when available** - select this option to trigger end of day line alarms using intraday prices. (*ShareScope Plus/Pro only*)

- **Line alarm colour** - tick to enable and select the default colour of line alarms using the corresponding style button to the right. The colour will appear when viewing alarms in the Alarm view, in the **Colour** column.
- **Use up/down colours for line alerts** - will replace the colour selected for a line alarm with colours used to represent up/down price movement in the graph colour scheme.

Global Intraday Alarm Options



- **Start alarms at Market Open** and **Start alarms at Market Open + 15 mins** allow you to set the time at which ShareScope starts to check for triggered alarms. In the period shortly after an exchange opens (particularly the LSE), there may be large swings in the mid price of certain shares, which may create a false impression of the day's trading. Select the +15 option to exclude this period from the alarms.
- **Limit alarms to the last n minutes** allows you to limit the period of time ShareScope checks back for triggered alarms. Alarms triggered before the selected time will be discarded.
- **Show alert on scheduled auctions** - allows you to set a global intraday alarm on scheduled auctions, and lets you choose between a five or ten minute warning. This will generate a single alarm in advance of the daily 7.50am and 4.30pm auctions on the LSE's SETS and SETSmm trading platforms, and the additional mid-morning and mid-afternoon uncrossings on SETSqx.
- **Interval after alert is deleted before active alarms re-trigger** – price alarms may re-trigger rapidly. Use this option to set a delay before ShareScope checks the alarm again. Note that deleting the alert is not the same as deleting the alarm.
- **Show pop-up alerts coloured** – there are default colours set for each alarm type. You can change these or set a colour for individual alarms in the Alarm wizard. These colours will be used in the Alarm and Alerts views by default but only for pop-up alerts if this option is ticked.
- **Maximum number of pop-ups** – select the maximum number of pop-ups that can be displayed simultaneously. If there are more alerts than the number specified, these will only be displayed once you have closed some of the pop-ups. On each pop-up is a **Cancel all** button. Click on this

button to delete all visible pop-ups and all those queued to appear. Alternatively, hold down the Shift key and click on this button to delete just those pop-ups currently displayed on the screen.

- **Double-click text opens** - select from the drop down box the intraday graph (default), details or list view to be displayed when you double click on a pop-up alert. To disable this feature click on the associated tick-box.
- **View on setting** - the view you choose to view from the above option can be displayed on any one of the 12 view settings. Select from the drop down box which you would like to view the pop-up alert information on.
- **Use existing view where possible** - this option will attempt to display the share's details in the last view clicked on, providing the alerted share belongs to the previously selected view's list. This option when enabled overrides the **Double-click text opens** option. If ShareScope can not use an existing view, a new view is opened as instructed above in **Double-click text opens**. Intraday and intraday-triggered end-of-day line alarms will always display the relevant graph with the alerted line displayed in a new view, provided that the option **Double-click text opens** is enabled.
- **Write alarms to log file** – you can record triggered intraday alarm information in a text file. Use the text box and browse button (...) to choose a location and name for the file.
- **Set actions for line alarms** – setting an alarm on a line you have drawn on a graph does not involve using the Alarms wizard. Use this option to set the notification methods for all line alarms – it displays the final page of the wizard.
- **Alarm email service** - only available from the **Tools>Options** menu, these options enable you set the email delivery options. These will be presented by the wizard but you will be able to change them for individual alarms. Note that you can enable/disable the email notification service from the Edit menu.

Linking Windows to the Alarms View

If the selected alarm in the Alarm View is for a specific share or instrument, then a linked Graph or Intraday Graph window will show the instrument's graph. If it is not (e.g. a news text alarm) then the Graph window won't change. Other windows that show information for a specific share such as News, Directors' dealings etc will behave in the same manner.

If you link a list table to an alarms table then this will only change share if the alarm is for an individual share that is on the list. If the share is not on the list or the alarm is, for example, a news alarm or list alarm then the table will simply stay on the last selected share.

Linking Windows to the Alerts View

You cannot link the Alerts view to another window. You have to right click on another window's title bar and link it to the Alerts view.

When you link a list window to the Alert table the Alert table changes to only show alerts for shares on the linked list. So news text alerts will also not be shown.

If you link a graph or any other window that shows data for a specific share; Level 2, Directors' dealing etc, then they will show the share for the alert selected. If the alert is for a News Text alarm then the linked window will not change from the last share shown.

It is possible, therefore, to use Space or Shift & Space to cycle up and down the list of alerts and this will change the linked window.