

Chapter 10 – Details View

NOTE: We recommend that you read **Chapter 5 – Settings** before this section.

What you will learn in this chapter:

- What the Details view is for.
- How to customise the Details view.
- How to save up to 12 of your favourite Details configurations – called *Details Settings*.

The Company Details view

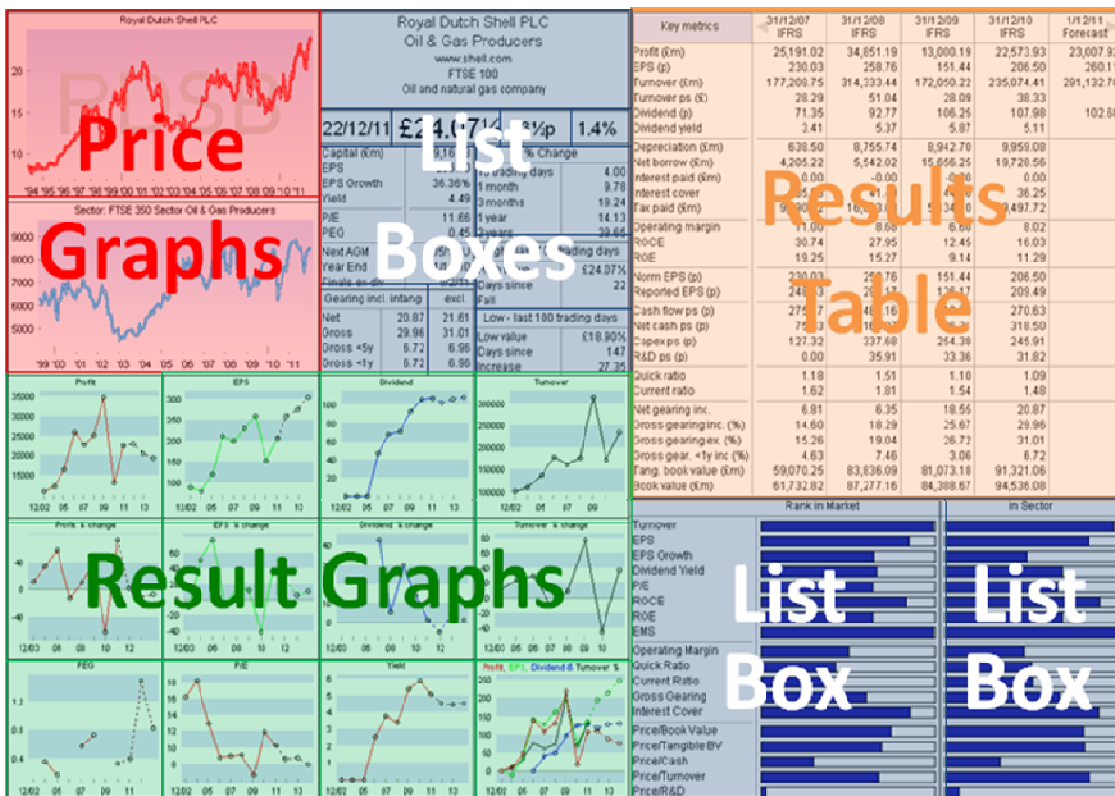
The Company Details view, or simply Details, is where you can find detailed financial information about a company. You can see the logic to ShareScope’s structure: the List view is where you can find or compare stocks whereas the Historical Graph, Intraday Graph and Details views show you information specific to the share you have decided to investigate.

The Details view is not just for financial information, however. On the default Details view you will find a company description, the latest price, a sector graph and graphs of selected financial metrics such as P/E, EPS and Dividend.

To help you customise the Details view, the content comprises a number of “boxes” which can be added, edited, moved and removed. There are four types of box for different types of data:

- List Box** For adding a single data item or a list of items (e.g. key dates).
- Results Table** For displaying historical and forecast company results.
- Price Graph** For displaying a simplified price chart for the company or another instrument (e.g. its sector index).
- Result Graph** For displaying historical and forecast data for a specific metric (e.g. P/E).

Look at the default Details view below; we have highlighted and identified the box types for you. Note that boxes of the same type don’t necessarily need to be grouped together.

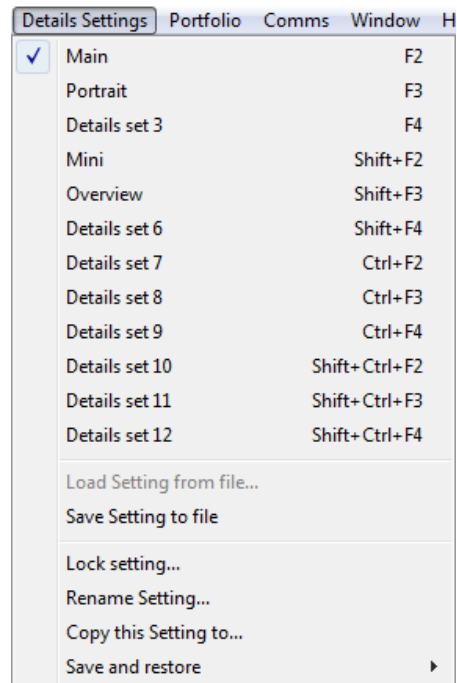


Details Settings

Like all of ShareScope’s views, you can customise the Details view and/or create a number of different views showing alternative sets of information. These are called **Details Settings**. ShareScope provides 12 Details Settings for you to customise - we’ll show you some ideas later in the chapter.

To access the Details Settings, first make sure you are looking at the Details view (ShareScope Gold) or that a Details window is the currently active window (ShareScope Plus & Pro).

Look at the ShareScope menu bar: the sixth option should have changed to **Details Settings**. Click on this menu and the following options should appear:



Note that settings 1 and 2 have been renamed Main and Portrait respectively. In ShareScope Plus and Pro, settings 4 and 5 are renamed Mini and Overview. These are pre-configured Details views which you may find useful. These are not sacrosanct: you can change and rename any of them.

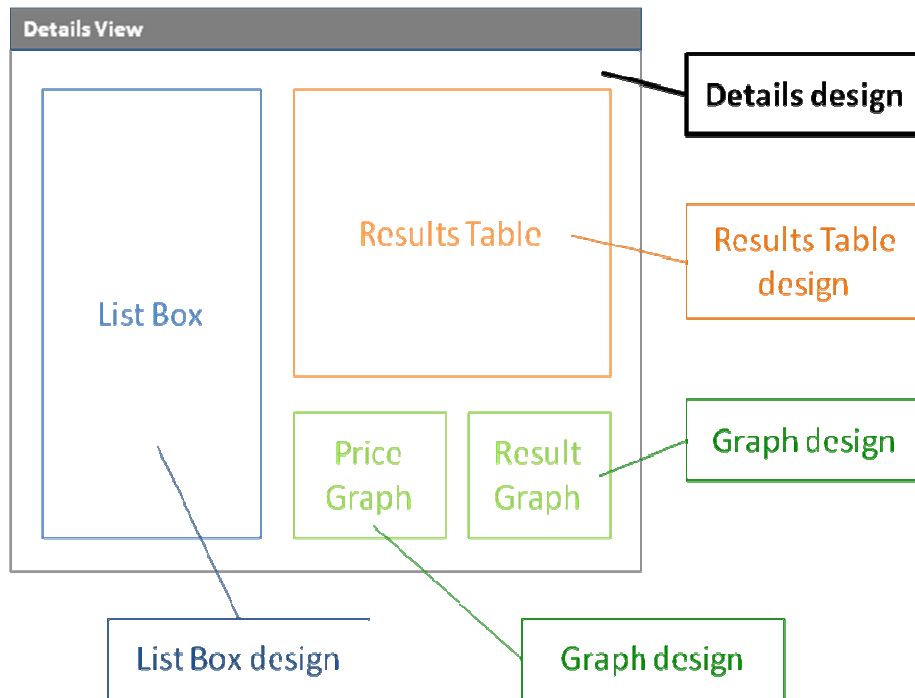
Remember, the changes you make in a setting will NOT affect other settings. Plus & Pro users: remember that the changes WILL affect Details views in other window layouts that use the same setting.

If you are going to work through this whole chapter you may find it easier to use one of the blank **Details Settings**. Click on the Details Settings menu and select a blank setting. If you haven’t yet customised any of your settings, **Details Set 3** should be blank.

Customising the Details view

You should by now have discovered that each of ShareScope’s views has a corresponding “design” option on its context menu (e.g. List design, Graph design).

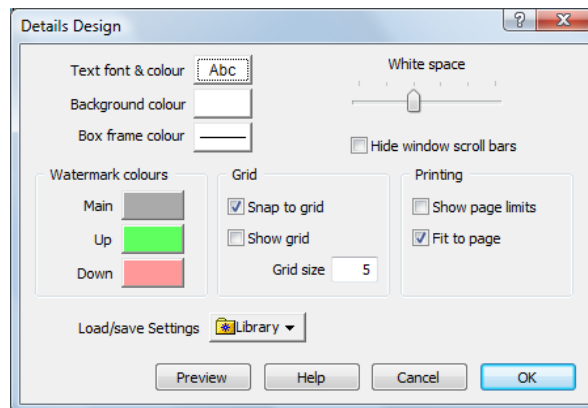
The Details view is a little different to this. It does have a **Details design** option on the context menu but it also has a design option for each box type. See the diagram of a simplified Details view below:



Details design	Governs characteristics not specific to individual boxes (e.g. fonts and colours). This option is always present on the context menu.
List Box design	Only appears on the context menu when a List Box is selected. Any changes you make will affect ONLY the List Box currently selected.
Results Table design	Only appears on the context menu when a Results Table is selected. Any changes you make will affect ONLY the Results Table currently selected.
Graph design	Only appears on the context menu when a Price Graph or Results Graph is selected. Any changes you make will affect ONLY the Graph currently selected. This is not the same as the Graph design option in the Historical and Intraday Graph views.

Details Design

Right-click in the Details view and select **Details design** from the context menu:



- **Text font & colour** – all text on the Details view uses the same font style and colour. Font size can be altered for individual items in List Boxes and Results Tables (using the List Box design and Results Table design options).
- **Background colour** – this specifies the background colour of the screen and the default colour for boxes. Background colour can be customised for individual boxes.
- **Box frame colour** – the default colour for the frame around new boxes. The frame can be turned off for each box individually.
- **White space** – use the slider to increase or decrease the 'white' space around words/graphs to assist with fitting the data onto the screen better. This setting will be applied to all boxes in the Details view.
- **Hide window scroll bars** – if the boxes you add to the Details view extend beyond the viewable space ShareScope will display vertical and or horizontal scroll bars (which will take up space). Use this option to hide any scroll bars.
- **Watermark colours** – watermarks can be selected when you add a Price Graph. Use this option to select the watermark colours. The **Main** colour is used for the EPIC code whilst the **Up** and **Down** colours are used if the price change is displayed on the graph.
- **Grid** – tick **Show grid** to display a 'pinboard' look on the background. You may find this useful when positioning boxes. The **Snap to grid** option can also be used to assist with positioning boxes. Alter the **Grid size** to suit your own requirements.
- **Printing** – to see the current printable area of the Details view select **Show page limits**. If your current view has boxes outside or is smaller than the printable area, select **Fit to page** so that the entire view will shrink or stretch so as to fill the printable area. Set the paper size, orientation and margins through the **Page set-up** option on ShareScope's **File** menu.
- **Load/Save Settings in the Library** - save and restore individual Details settings which can be easily exchanged with other ShareScope users. To save a Detail setting, click on the **Library** button and select **Add current Setting to library**. You can then name and save this setting in your **Library** folder or save to another location. To restore a Details setting at a later date, click on the **Library** button and select from the list or choose **Open library folder**. This is also useful if you have used up all your Details settings. You can save one that you are not currently using to the library before over-writing it. When you need it back, simply restore it from the library.
- **Preview** – see how your changes will affect the page before making them permanent by clicking the **Preview** button. If you want to cancel all your changes simply click the **Cancel** button to return to the Details view as it was. Click on **OK** to apply any changes.

List Boxes

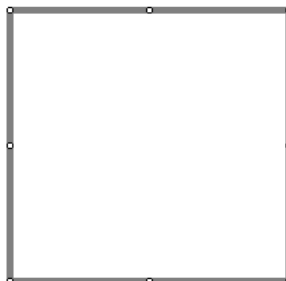
A List Box is so-called because it can contain any data that you can add as a column in the List view. The layout below, taken from the default Details view, is made up of 11 separate **List Boxes**, all sized differently and containing different information.

3i Group PLC Financial Services www.3igroup.com FTSE Mid 250 Investment company, which focuses on buyouts, growth capital and infrastructure			
18/11/11		£1.89	-1½p -0.8%
Capital (£m)	1,835.9	% Change	
EPS	19.60	10 trading days	-3.42
EPS Growth	13.95%	1 month	-4.35
Yield	1.90	3 months	-7.44
P/E	9.65	1 year	-40.01
PEG		3 years	-21.28
Next AGM	6/7/12 U	High - last 100 trading days	
Year End	31/3/11	High value	£2.92
Finals ex-div	15/6/11	Days since	140
Gearing incl. intang	excl.	Fall	-35.26
Net	28.63	28.63	Low - last 100 trading days
Gross			Low value
Gross <5y			£1.84
Gross <1y			Days since
			48
			Increase
			2.72

TUTORIAL: to help you learn how to add and edit List Boxes we've written the following sections as a tutorial in which we'll create the topmost List Box in the image above. We'll describe all the editing features as we go along. At the end of this section we'll also work through some further examples of List Boxes.

Add a new List Box

Right-click in the Details view and select **New List Box** from the context menu. An empty frame will appear on the screen:



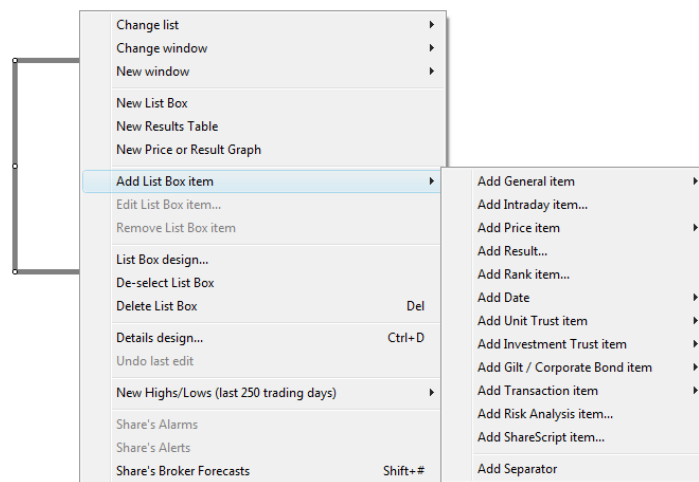
The thick grey outline lets you know that the box is currently selected. If you left-click elsewhere in the view away from the selected box then the box becomes de-selected. You can also de-select a box by right clicking on the box and selecting **De-select List Box** from the context menu. To select a box again, simply click on the box you want to select.

Moving and Resizing List Boxes

- While a box is selected you can move it by using the up/down/left/right cursor arrow keys on your keyboard.
- You can also move the box by placing your cursor on a section of the grey frame and when you see a four-headed arrow cursor, left click and drag the box to a new position on the view.
- Now move the cursor to one of the eight points on the box. When you see a two-headed arrow instead of your cursor, click and drag to resize the box from the point you've selected.
- You can move and resize the boxes at any time. You'll probably find that you resize it as you add items to it.

Add an item to a List Box

Right-click in the List Box and move your cursor to **Add List Box item**. The same menu will appear as when you add a column in the list view:



NOTE: Risk Analysis and ShareScript items are only available in ShareScope Plus and Pro. The **Add Separator** option adds a dividing line between the items above and below.

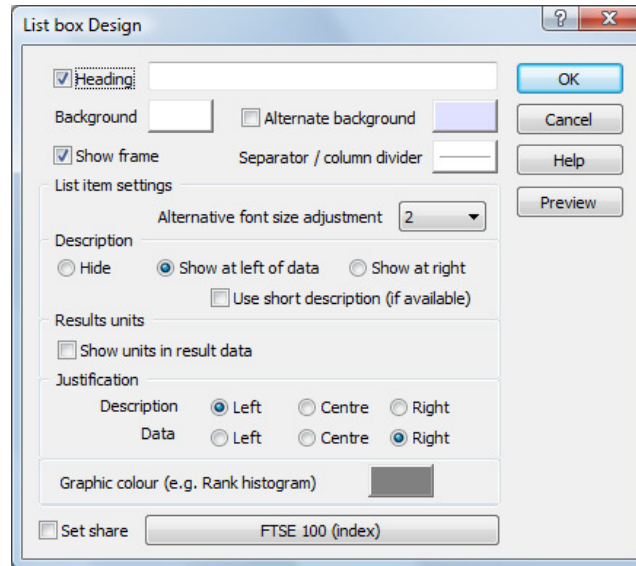
TUTORIAL: To create our example List Box, click on **Add General item** and add **Name**. Repeat to add **Sector**, **Website**, **Index** and **Company Activities**. Your box should now look something like this:

Name	3i Group PLC
Sector	Financial Servi...
Website	www.3igroup.c...
Index	FTSE Mid 250
Activities	Investment company, which focuses on buyouts, growth capital and infrastructure

Move the cursor over each item in the List Box and you'll notice that they become highlighted and the cursor changes to a hand icon. To move an item to a different position in the list, click on it and drag up or down to the desired position.

Customise a List Box

You may notice that although your box contains the same information as our example, they do not look alike. This is where customising individual boxes can really make your Details view stand out and help you highlight important information. Right-click within the List Box and select **List Box design** from the context menu. The following dialog is displayed:



The options are described below after which we'll go through the changes necessary to replicate our example List Box.

- **Heading** - add a static heading of your choice. Type in the required text, if the box is ticked but the field is blank then no heading will be displayed.
- **Background** - click on this box to select a background colour for this List Box that is different to the main background colour specified in Details design.
- **Alternate background** - enable this option to display alternate items with a different colour background. Click on the box to change the colour. The “Mini” setting available in ShareScope Plus and Pro demonstrates the use of different **Background** and **Alternate background** colours:

3i Group PLC			
Financial Services			
FTSE Mid 250			
www.3igroup.com			
Capital	1,835.9	EMS (€)	33k
ROCE		Yield	1.90
Quick ratio	0.00	EPS	19.60
Curr. ratio	0.00	P/E	9.65
Op. margin		P/E pr	
Net gear inc	28.63	PEG	
NAV (€m)	3,357.36	PEG pr	

- **Show frame** - click on this box to display the frame around the box.
- **Separator/column divider** - set the colour of the line used between columns and beneath the heading (if used).
- **Alternative font size adjustment** - individually, items can be set to use a different font size to the default set in the main Details design dialog. For example, you may want to create a heading or footnote. This option sets the alternative font size for the List box. See **Changing the font size** below.

- **Description** - you can choose whether to show the description on the **left** or **right** of the data or whether to **hide** it. Select **Use short description** to reduce the space used by some of the descriptions.
- **Results units** - this option lets you choose whether to display results units (e.g. £ or p). If you select the **Use short description** option (above) you will be given the option to **show units with the description**, **show units with the data**, or **hide** units. If you select to hide results units, you can still set them for individual criteria using the **Numeric display** option available via the context menu.
- **Justification**: use these options to align the text in the box.
- **Graphic colour** (e.g. Rank histogram) - enables you to select the fill colour for rank histograms.
- **Set share**- by default, ShareScope will add data for the share currently selected in the List screen. When you press the Spacebar in the Details screen, data for the next share in the list will be displayed. However, in some cases you may wish the data in a box to remain unchanged. For example, you may want to include data for the overall market – such as the FTSE 100 or FTSE All Share. Click on this button to select the share or index.

TUTORIAL: To replicate our example List Box, change the following settings:

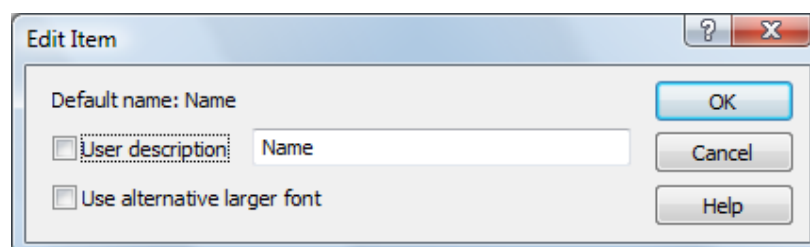
1. Untick the **Heading** option.
2. Set the **Alternative font size adjustment** to 4.
3. Change the **Description** setting to **Hide**.
4. Set the **Justification of Data** to **Centre**.
5. Now click on **OK** to apply your changes. Your box should now look something like this:



All that remains is to enlarge the **Name** and **Sector** items and resize the box to fit (which we've already covered).

Changing the font size

When you create a List Box you have the option to set an alternative text size. Most frequently you'll set a larger font size so that you can make some items stand out although you may want to set a smaller size for footnotes. Right-click on the item that you wish to edit. From the menu that appears, select **Set Description/size**; the following dialog will be displayed:



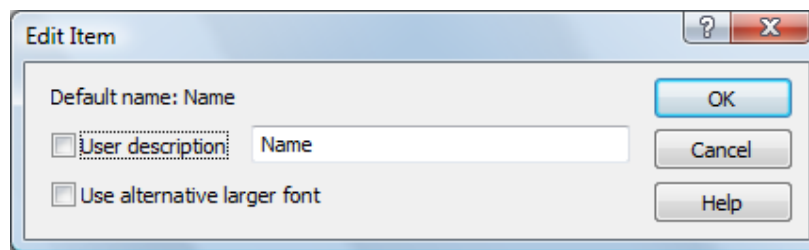
Simply, tick the **Use alternative larger font** option. Press **OK** to complete. You'll notice that you can also change the preset description for the item in this dialog.

TUTORIAL: For the top two items in the List Box (Name and Sector), tick the alternative font size. Finish by resizing the List Box so that you end up with something like this:



Changing the preset description

You can change the preset description text for any item. It may be that you need to shorten the text to help fit the contents into a small space. Right-click on the item you wish to edit. From the menu that appears, select **Set Description/size**; the following dialog will be displayed:



Tick **User description** and then type in your new description. Press **OK** to complete. You'll notice that you can also change the size of the font in this dialog.

Changing the numeric display

For list box items that have numerical data, there are a range of options including decimals/fractions, the number of decimal places, rounding and currency unit. Right-click on the item and select from the options on the menu. For numerical items that may not have a value, you can choose to display zero. Right-click on the item and select **Display zero** from the menu.

More List Box examples

The default Details view also includes the following panel:

18/11/11 £1.89 -1½p -0.8%

This is simply four individual List Boxes containing the **Last Price date**, **Close price**, **Price + / -** and **% Price + /-**. For each box, the description has been hidden and the frame has been turned off. The **Close price** box has an alternative font size of 13 whereas the other three boxes use an alternative font size of 5. Each box has been resized and positioned accordingly.

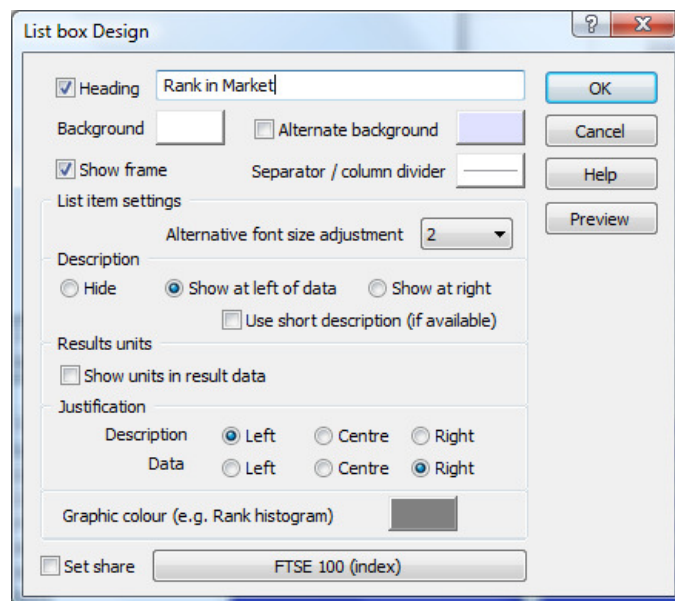
Sector Ranking

The default Details view includes the following company ranking display:

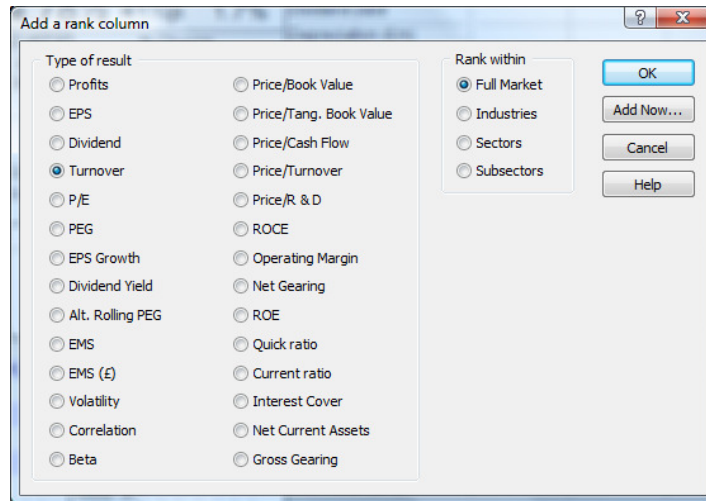
	Rank in Market	in Sector
Turnover		
EPS		
EPS Growth		
Dividend Yield		
P/E		
ROCE		
ROE		
EMS		
Operating Margin		
Quick Ratio		
Current Ratio		
Gross Gearing		
Interest Cover		
Price/Book Value		
Price/Tangible BV		
Price/Cash		
Price/Turnover		
Price/R&D		

This is comprised of two List Boxes. To create, follow these instructions:

1. Right-click in the Details view and select **New List Box**. Resize the new box to be large enough.
2. Right-click on the List Box and select **List Box design**.
3. In the Heading field, enter “Rank in Market”.



4. Click on the **Graphic colour** button and change the colour as desired.
5. Click on **OK**.
6. Right-click on the List Box and select **Add List Box item**. From the sub-menu, select **Add Rank item**.
7. The following dialog box will appear. In the **Rank within** panel, click on **Full market**.



8. Now select each required item in turn and then press **Add Now**. Choose different items to the default display if you wish. You'll see the items added to the List Box.
9. When you've added them all, click on **OK** to close the dialog.
10. Right-click on the List Box again and select **Add List Box item** and then **Add Separator**. Repeat once more so that you have two separator lines at the end of the list.
11. Now move the cursor over one of the separator lines; the cursor will change to a hand icon. Left click and drag the separator line to between the **EMS** and **Operating Margin** items.
12. Repeat to move the other separator line to between the **Interest cover** and **Price/Book value** items.
13. Rename the descriptions to make them shorter if desired. For example, the first item is called "Turnover Rank in Market". We have renamed it simply "Turnover" to conserve space. The Heading tells us that the ranking refers to the full market. To change the description, right-click on each item and select **Set Description/size**. Enter the required description.
14. Resize the List Box to the preferred size. Note that you can click and drag the border between the Description column and the Rank Histograms as well.

To create the second List Box, repeat the above instructions but with the following changes:

1. Add the heading "Rank in Sector".
2. Select to Hide the description.
3. When you add the rank items, make sure that **Sectors** is selected instead of **Full Market**. Be careful when creating these sorts of boxes as you'll need to make sure that the items are added in the correct order so that the data matches in both boxes. Simply move the mouse over each histogram to reveal the description.

Plus/Pro users: you could create a **Details Settings** which contained just the **Company Ranking** display and add it as a discrete window to one of your layouts.

Key Dates

Another example of what you can create using List Boxes is this Key Dates box:

KEY DATES	
Float date	20/6/73
Interims end	30/6/11
Interims ann.	30/8/11
Year End	31/12/10
Prelim. results	2/3/11
Annual report	2/3/11
AGM	10/5/11
Interims ann.(next)	30/8/12 U
Year End(next)	31/12/11
Prelim. res.(next)	2/3/12 U
Annual rep.(next)	2/3/12 U
AGM (next)	10/5/12 U

In the **List Box design** dialog, add the heading “KEY DATES” and change the background colour to yellow or whatever colour you prefer. To add the date items shown, right-click in the List Box, select **Add List Box item** and then **Add Date**.

Plus/Pro users: you could create a **Details Setting** which contained just the Key Dates box and add it as a discrete window to one of your layouts.

Results Table

Add a Results Table to your Details view to compare year-on-year and interim results for a selected company. This includes both headline results and more advanced results and ratios such as ROCE, Operating Margin and Gearing.

Key metrics	31/3/07 IFRS	31/3/08 IFRS	31/3/09 IFRS	31/3/10 IFRS	31/3/11 IFRS	1/3/12 Forecast
Profit (£m)	2,484.00	1,976.00	-244.00	1,007.00	1,717.00	2,319.77
EPS (p)	21.66	23.68	4.76	14.70	18.65	21.20
Turnover (£m)	20,223.00	20,704.00	21,390.00	20,859.00	20,076.00	19,465.21
Turnover ps (£)	2.44	2.57	2.77	2.69	2.59	
Dividend (p)	15.10	15.80	6.50	6.90	7.40	8.14
Dividend yield	4.97	7.27	8.31	5.57	3.99	
Depreciation (£m)	2,919.77	2,888.95	2,889.87	3,038.48	2,979.12	
Net borrow (£m)	7,781.70	9,908.09	12,607.11	11,339.18	9,506.98	
Interest paid (£m)	240.00	378.03	620.06	1,168.86	924.01	
Interest cover	4.32	4.21	1.35	2.68	3.42	
Tax paid (£m)	-368.15	238.07	-53.00	-21.94	212.77	
Operating margin	15.04	14.83	5.40	10.38	13.11	
ROCE	20.84	17.39	7.36	29.39	27.57	
ROE	29.69	23.81	15.75		38.39	
Norm EPS (p)	21.66	23.68	4.76	14.70	18.65	
Reported pretax ps (p)	29.26	23.99	-3.19	12.63	21.12	
Cash flow ps (p)	54.64	59.29	49.58	50.14	46.79	
Net cash ps (p)	9.77	18.41	16.79	18.73	4.52	
Capex ps (p)	38.11	40.33	39.33	32.04	33.94	
R&D ps (p)	4.56	6.60	7.64	5.74	5.02	
Quick ratio	0.62	0.68	0.66	0.61	0.56	
Current ratio	0.64	0.70	0.68	0.62	0.58	
Net gearing inc.	183.61	183.15	8,877.22	-427.85	493.78	
Gross gearing inc. (%)	202.68	209.68	9,792.69	-482.63	512.01	
Gross gearing ex. (%)	519.23	552.23	-381.37	-202.31	-673.21	
Gross gear. <1y inc (%)	51.99	28.17	1,085.88	-123.33	25.19	
Tang. book value (£m)	1,654.20	2,053.98	-3,646.23	-6,322.34	-1,464.21	
Book value (£m)	4,237.73	5,409.47	142.00	-2,650.19	1,925.17	

Scrolling the Results

ShareScope holds headline results data going back to 1992 for some instruments. Your results table may not be able to show all the years of results for the current instrument, so you may need to scroll backwards or forwards to see all the results.

Behind the first and last year results visible in the Results Table you should see an arrow (triangle):

◀ 31/3/07 IFRS	31/3/08 IFRS	31/3/09 IFRS	31/3/10 IFRS	31/3/11 IFRS	▶ 1/3/12 Forecast
-------------------	-----------------	-----------------	-----------------	-----------------	----------------------

Place your cursor over the arrow and it will change to a horizontal arrow. When you see this, simply click with your mouse to step through the available years.

Alternatively, if you have a mouse with a wheel on it, place your cursor over the results below the years where you should see the hand icon with a horizontal double headed arrow. If you then move the mouse wheel the years should scroll left or right depending on whether you scroll up or down.

You can also use the mouse with the hand icon and just left click and drag the columns from left to right to view results from other years.

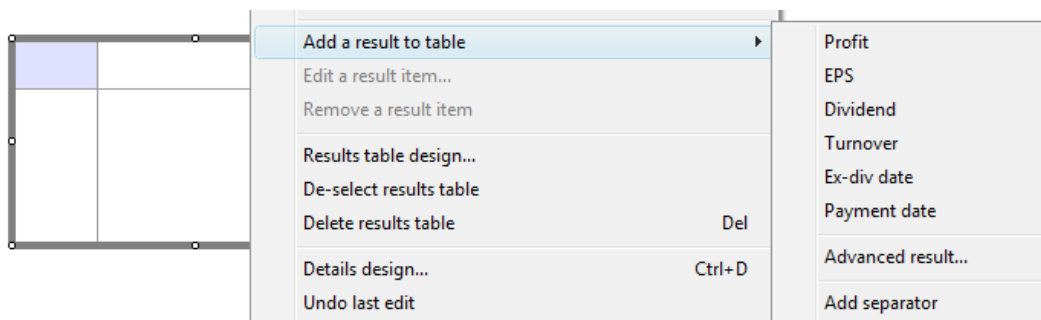
Create a new Results Table

To add a new Results Table to a setting, select **New Results Table** from the Details context menu. This blank box will appear:



Adding items to a Results Table

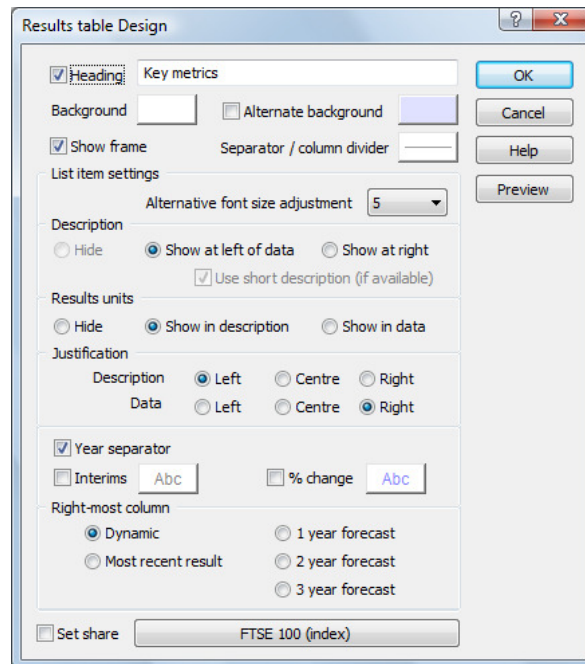
Right click in the Results Table box and go to **Add a result to table** to see the available options.



The top six options are commonly chosen items. To select more advanced options, select **Advanced result**.

Customising a Results Table

As afore-mentioned, you can customise individual Results tables. Right-click in the box and select **Results table design** from the menu. The following dialog will be displayed:



- **Heading** - the Results table on the Main Details Setting includes the heading Key Metrics (as shown above). The heading appears in the top left box of the Results table.
- **Background** - click on this box to select a background colour for this Results Table that is different to the main Details background colour.
- **Alternate background** - enable this option to display alternate items with a different colour background. Click on the box to change the colour.
- **Show frame** - click on this box to display the frame around the box.
- **Separator/column divider** - set the colour of the line used between columns and beneath the heading (if used).
- **Alternative font size adjustment** - individually, items can be set to use a different font size to the default set in the main Details design dialog. For example, you may want to create a heading or footnote. This option sets the alternative font size for the List box. See **Editing Individual Items** below.
- **Description** - you can choose whether to show the description on the **left** or **right** of the data or whether to **hide** it. Select **Use short description** to reduce the space used by some of the descriptions.
- **Results units** - this option lets you choose whether to display results units (e.g. £ or p). If you select the **Use short description** option (above) you will be given the option to **show units with the description, show units with the data, or hide** units. If you select to hide results units, you can still set them for individual criteria using the **Numeric display** option available via the context menu.
- **Justification:** use these options to align the text in the box.
- **Year separator** - this option adds or removes the vertical lines between columns.
- **Interims** - this option lets you include interim results and quarterly results (where available) and

display them in a different colour font to the full results.

- **% change** - select this option to include the annual percentage change in brackets after the results data, and to display the value in a different colour.
- **Right-most column** - there may not be room to fit all the results and forecast columns in the Results table that you have created. These options enable you to specify which column is always right-most in the table. It may be that, for ease of comparing one share with another, you prefer to always see the **Most recent** results in the right-most column. Note that ShareScope will still display the forecast data if there is room. With **Dynamic** selected, ShareScope displays a combination of results and forecast data dependent on space and available data.
- **Set share** - by default, ShareScope will add data for the share currently selected in the List screen. When you press the **Spacebar** in the Details screen, data for the next share in the list will be displayed. However, in some cases you may wish the data in a table to remain unchanged. For example, you may want to include data for the overall market – such as the FTSE 100 or FTSE All Share. Click on this button to select the share or index.

Editing Individual Items

Each item that you add to a Results Table can be further customised individually. The **Description** name can be changed, the Alternative font size can be used and the **Numeric display** can be adjusted. These options have been described above in the List Box section.

See:

- Changing the font size*
- Changing the preset description*
- Changing the numeric display*

Moving items within the Results Table

In both List Boxes and Results Tables you can change the ordering of items that you have added. Select the box that contains the data you want to re-organise. Move the cursor over the item you wish to move; it will change to a hand icon. To move an item up or down within the list, simply left-click and drag the item up or down to a new position.

Deleting items from the Results Table

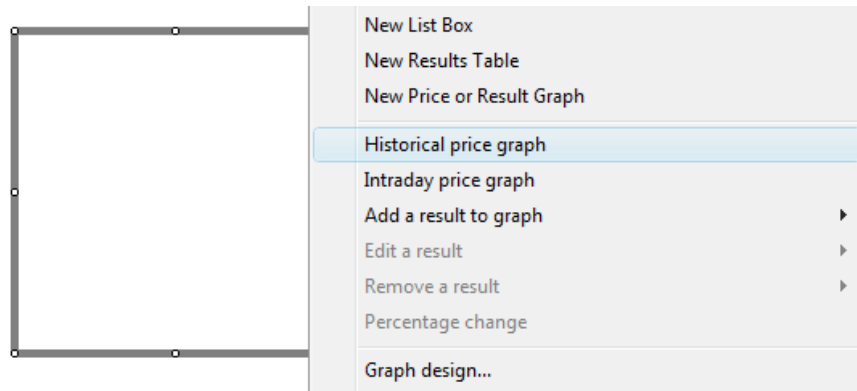
To remove an item from the Results Table, move the cursor so the item to be removed is highlighted. Right-click on the item to access the context menu, then select **Delete item (x)**; where x is the name of the item you have selected.

Price Graph

A Price Graph box allows you to display a price graph for any instrument. ShareScope Plus & Pro users can add historical or intraday graphs.

To add a new Price Graph to the setting, right-click in the Details view and select **New Price or Result Graph**. A blank box will appear on the screen.

Right-click in the blank box and select either **Historical price graph** or **Intraday price graph** (ShareScope Plus or Pro only). By default, the price chart for the currently selected instrument will be displayed.



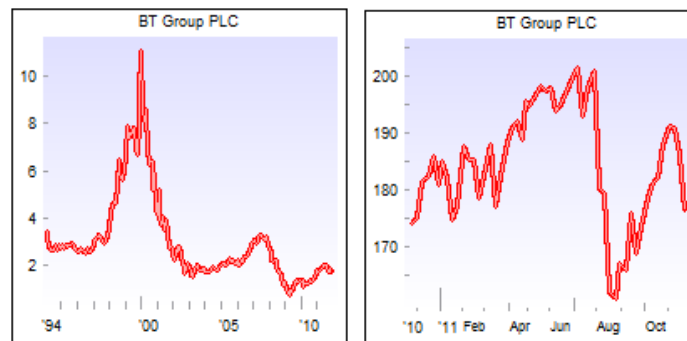
Historical price graphs show a closing price line for the full history available in ShareScope.

Price history less than 12 months – daily closing prices plotted

More than 12 months price history available – weekly closing prices plotted

More than 5 years price history available – monthly closing prices plotted

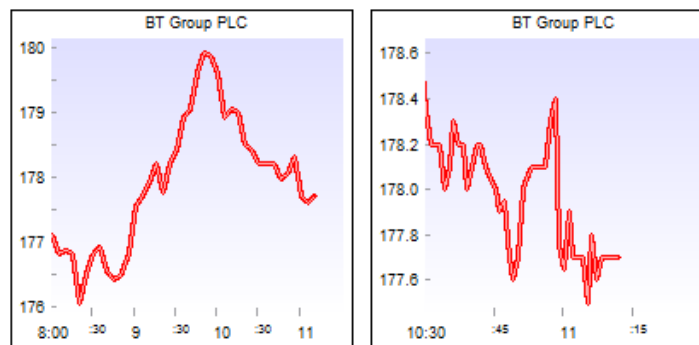
If there is more than 12 months price history available you can temporarily zoom in on the last 12 months by holding down the **Ctrl** key and left-clicking in the graph box. Repeat to zoom back out.



The graph on the left above shows the full history, the one on the right shows the last 12 months.

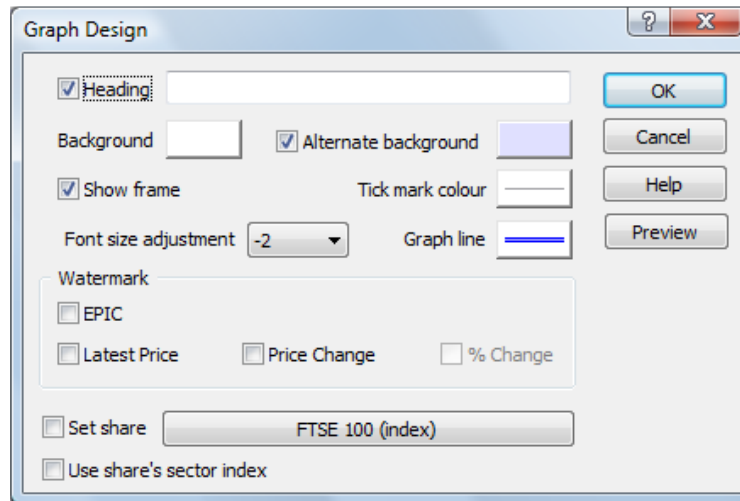
Intraday price graphs show 5-minute prices from today's open until the current time. If the market has closed then it will show the full day's trading. If you are not connected to the intraday feed then it will show you all the available intraday data for the last day you received prices for (graph on left below).

To view just the last hour of trading, hold down the **Ctrl** key and left-click in the graph box (graph on right below). The price line will show 1-minute prices.



Customising a Price Graph

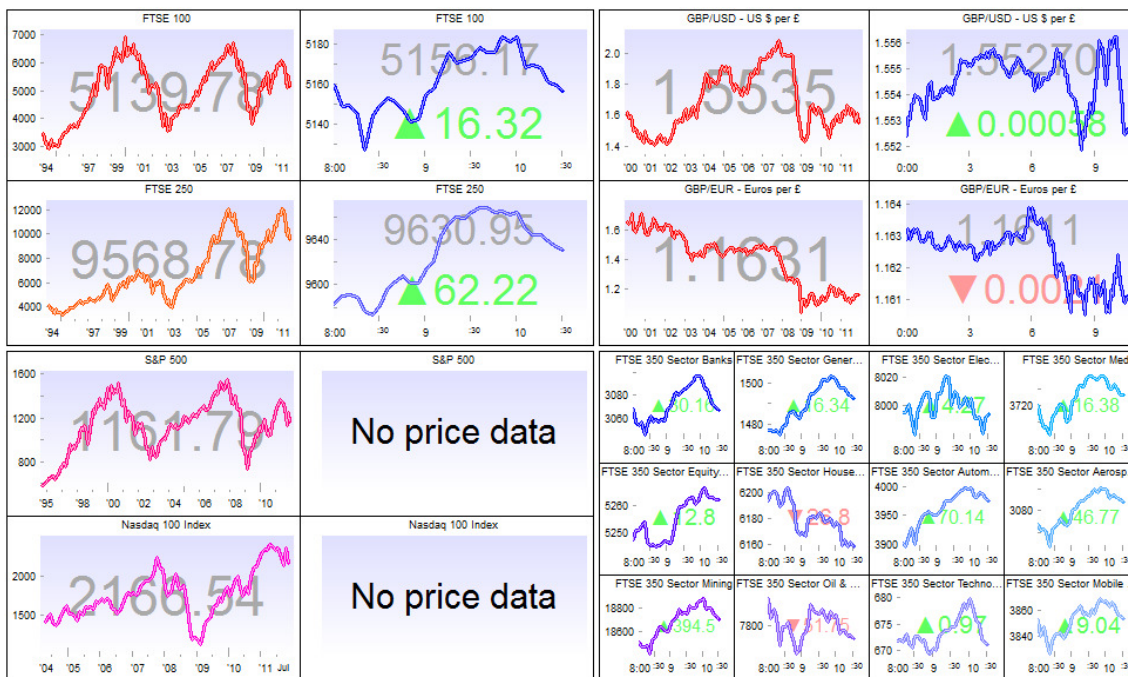
As with other boxes, you can customise individual price graphs. Right-click in the Graph box and select **Graph design** from the menu.



- **Heading** - lets you add a heading of your choice. Make sure the box is ticked and type in the required text.
- **Background** - click on this box to select the background colour for the graph.
- **Alternate background** - enable this option to display alternate bands of colour. Click on the box to change the alternate colour.
- **Show frame** - use this option to show/hide the frame around the graph.
- **Tick mark colour** - set the colour of the tick marks on the x axis and of the zero line on the y axis.
- **Font size adjustment** - use this option to change the size of the text used on the graph.
- **Graph line** - click this button to change the colour, thickness and style of the price line.
- **Watermark** - use these options to display a watermark for the **EPIC**, **Latest price**, **Price change** (from the previous closing price) or **% Change**. The colours used for the watermarks are set in the Details design dialog.
- **Set share** - by default, ShareScope will add the graph for the current share. When you press the Spacebar in the Details screen, the next share in the current list will be displayed. However, in some cases you may wish the graph to remain unchanged. For example, you might wish to include a graph of the FTSE 100 or FTSE All Share as comparison. Another example can be seen in the next section. Click on this button to select a different share or index. See **Using Set Share** below.
- **Use share's sector index** - use this option to add an historical graph of the current share's sector index (if available).

Using Set Share

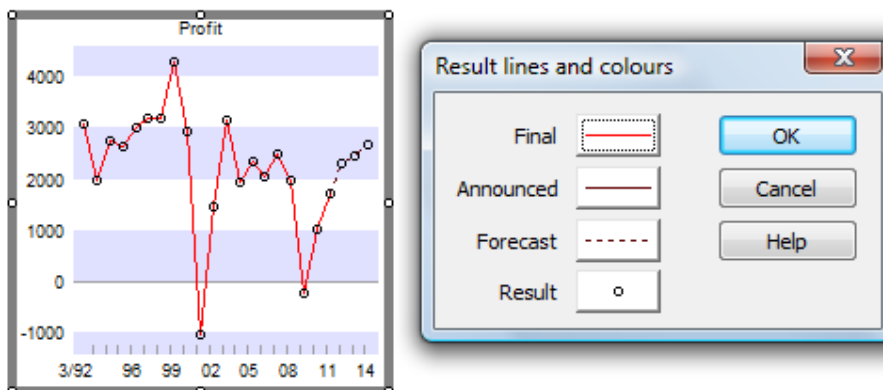
An example of how you can use the **Set share** option in the Graph design dialog can be seen below. This is the **Overview** Details Setting which is preset in ShareScope Plus and Pro. The graphs displayed remain unchanged regardless of which underlying instrument is selected.



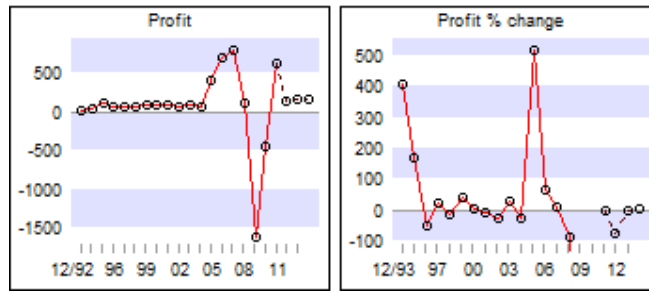
Result Graphs

The Result graph allows you to plot the company's historical and forecast **Profit**, **EPS**, **Dividend**, **Turnover**, **P/E**, **PEG**, **Yield** or **EPS Growth**. The first four items can all be plotted on the same graph if desired.

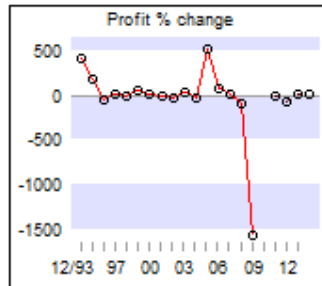
Select an item from the **Add a result to graph** sub-menu. Before the item is added you are able to customise the colour and style of the result line and markers on the graph.



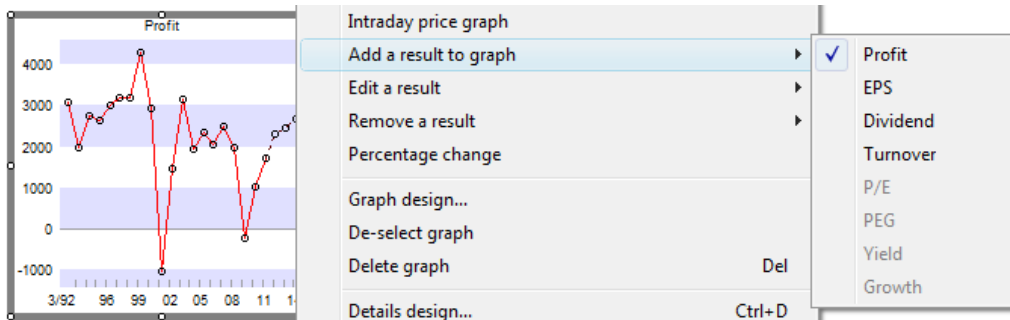
Results can be graphed using the actual values, or by their annual percentage change. To show the annual percentage change, right-click in the graph and select **Percentage change** from the context menu.



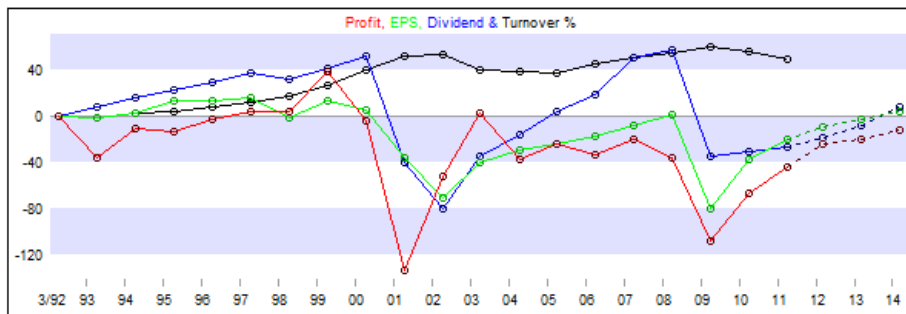
You may notice that in the **Profit % change** graph above some plots go 'off the scale'. These spikes are deliberately treated this way to make the graph more readable. To display all the plots on the graph, hold down the **Ctrl** key and click inside the graph. The same graph would then look like this:



To add more items, right click in the graph, go to **Add a result to graph** and make a selection from the items still available to you:

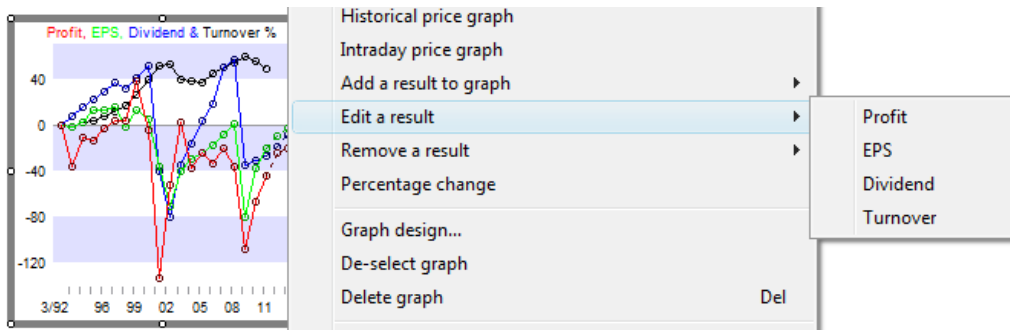


When you add more than one result to a graph (e.g. Profit and Turnover), their values may be in different ranges which makes it difficult to display them clearly on one graph. To get around this, ShareScope displays each value as a percentage of the first historical value. This way, the two results fit within the same range and the trends remain the same. For actual values, consult the results table.



Change the line style or colour of a result

To alter the line style or colour for a result once it has been added, right-click in the graph box and select **Edit a result**. If there is more than one result you can select the one to edit from the sub-menu.

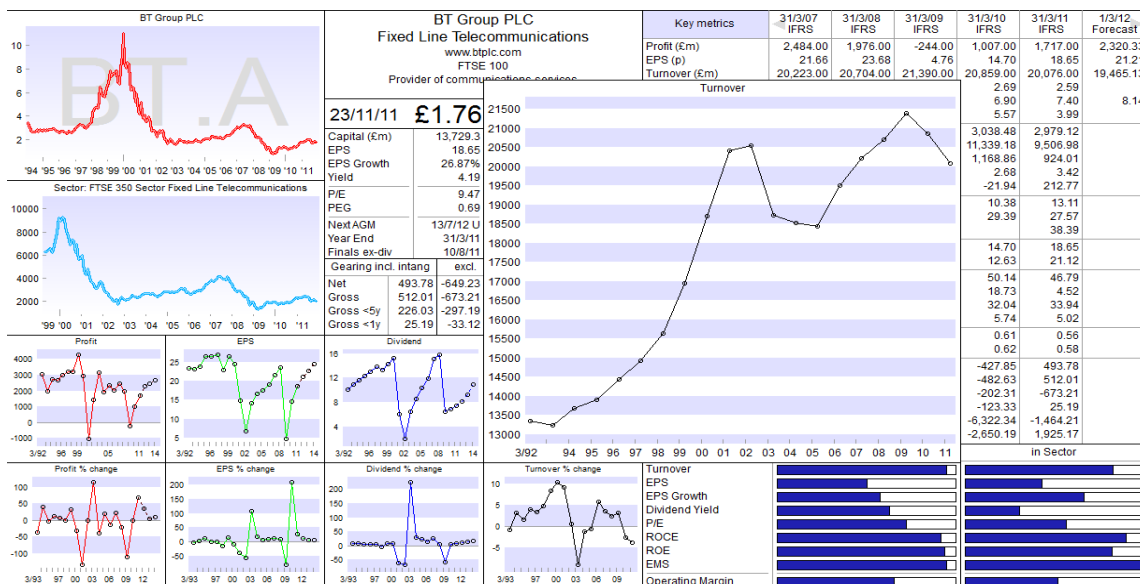


Remove a result

To remove a result from a Result Graph box, right-click in the box and select **Remove a result** from the context menu. Again, if there is more than one result on the graph you can select the result to remove from the sub-menu.

Maximise a graph box

To have a closer look at the graph, position the mouse cursor inside the graph and then hold down the **Shift** key and left mouse button. The graph will be expanded to around four times its size for as long as you hold the mouse button down.



Undo Last Edit

For any changes that you make to the Details view – whether it be adding/removing boxes or items within boxes, or resizing and moving boxes, you are able to undo the last change you made.

Please note that you can only undo the very last change you made.

Right-click in the view to access the context menu and select **Undo last edit**. If this item is greyed out then it is not available for the last change you made or you've already undone the very last change.

Deleting a List Box, Results Table or Graph box

To remove a box completely from the current setting, select the box first so it has the thick grey line around it. Then simply press the **Delete** key on your keyboard. Alternatively, right-click and select the appropriate delete option from the menu.

You will receive a confirmation message asking if you're sure you want to remove the selected box.

If you realised you've still made a mistake and want the box back, you can always use the **Undo last edit** option (see below).