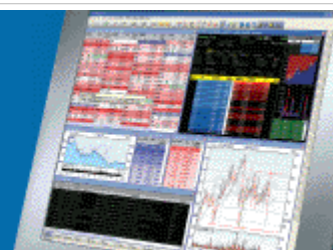


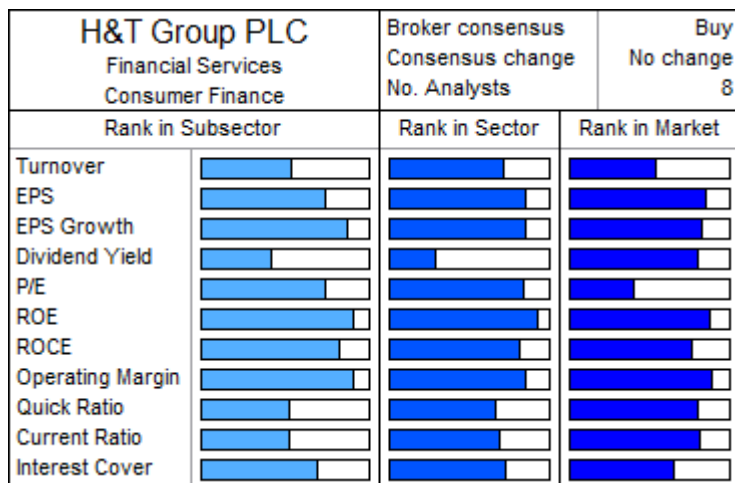
# ShareScope Training Zone

Your guide to getting the best out of ShareScope



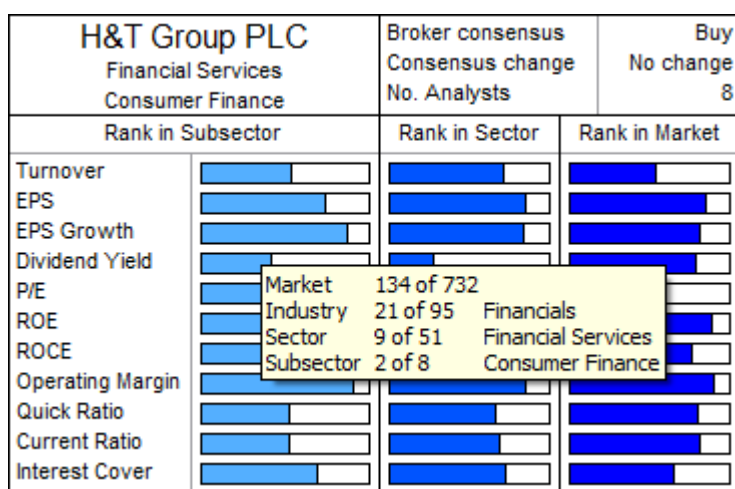
## Tutorial 38 – Company Ranking

A visual way to rank the relative attractiveness of companies is by using ShareScope's Ranking Histograms. Look at the example below:



This histogram shows how the company ranks for various metrics against the companies in its subsector, sector and across the market in general. The fuller the histogram, the more attractive the value. For example, a full P/E histogram means a low (good) P/E value.

You can display ranking histograms for the company's sub-sector, sector, industry and for the full market. However, to save you screen real-estate, if you hover your mouse over any of these histograms, ShareScope will display the full ranking data across each classification level.



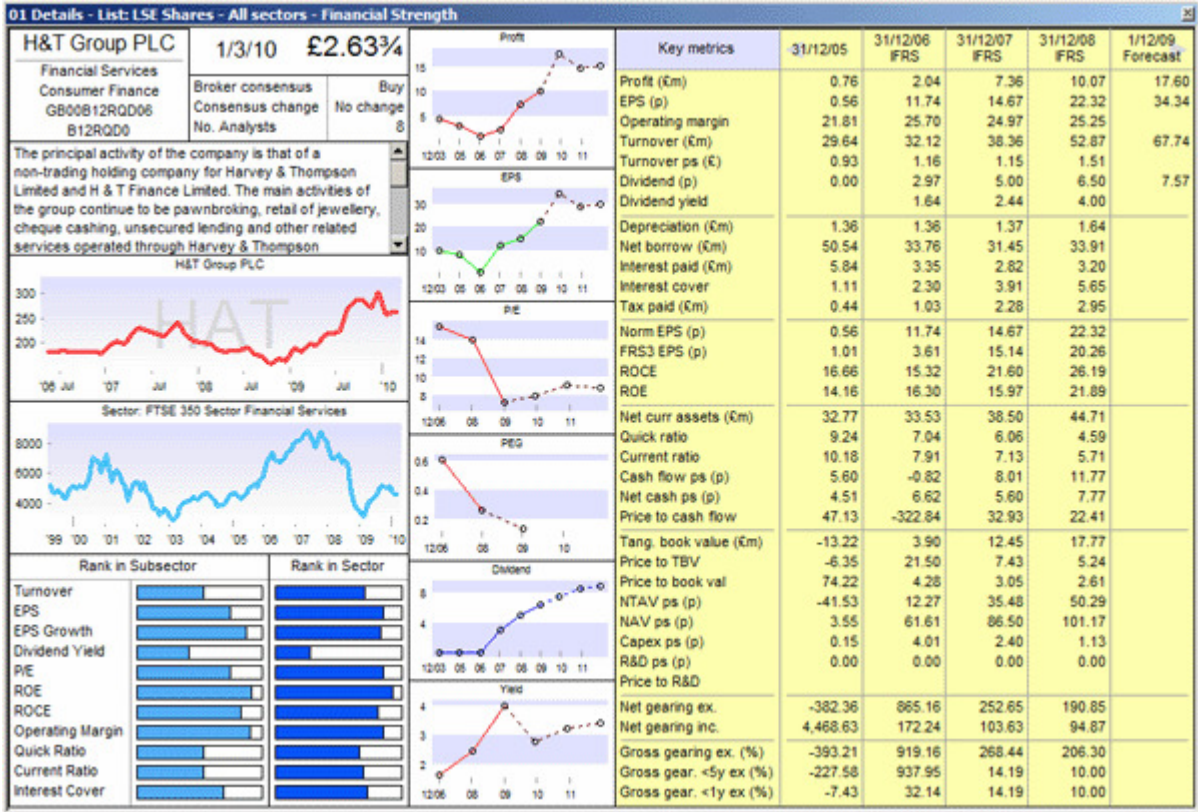
You can add ranking columns for a wide range of fundamental metrics enabling you to build up either snapshot or in-depth visual guides to a company's financial health or attractiveness as an investment.

Ranking histograms can be added as columns in a List or as a panel on the Details page.

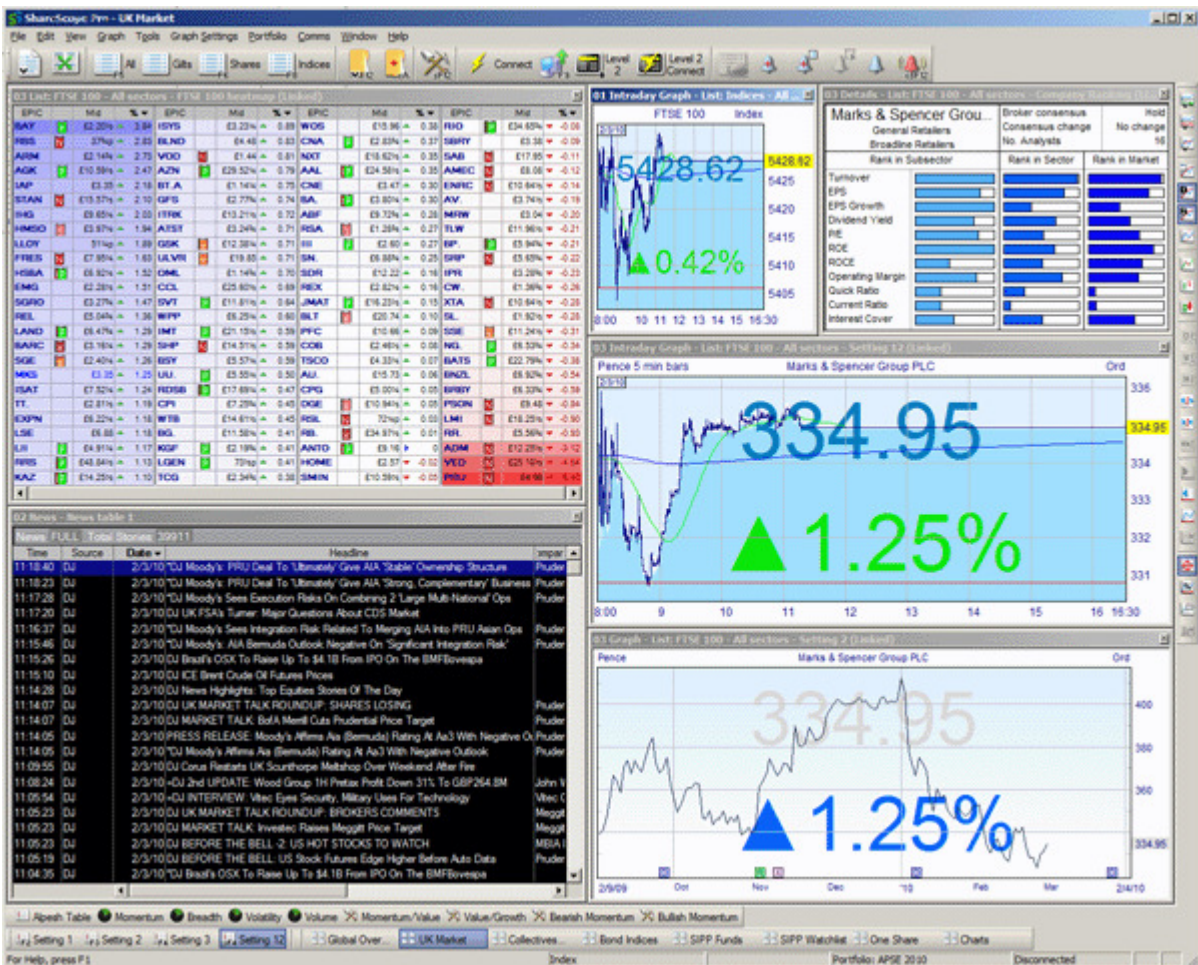
You can also use company ranking in data mining filters. For example, you could search for companies in the top quartile in their sector for rolling P/E and projected yield (i.e. cheap price and high yield).

See the examples below:

Rank Histograms in the Details screen



Here, the ranking histograms have been incorporated into a larger Details view.



In the example above, a Details window just displaying ranking histograms has been incorporated into a multi-window layout. To create this, first select or open a Details window (Gold users: go to

Details view). Next select a blank Details setting from the **Details Settings** menu. Right click in the Details screen and select **New List Box**.

An empty box will be created. Right click on the box and select **New List Box Item** and then **Add Rank Item** from the submenu. A dialog box will open which enables you to select dozens of different ranking criteria. Note that the **Add now** button in the dialog enables you to add multiple columns one after another. To change the colour of the histograms, right click in the List box and select **List Box Design**. Near the bottom of the dialog you will find an option to change the histogram colour.

### Ranking Histograms in List Tables

02 List: FTSE 350 - Support Services - Table 6									
Name	Sector	Close	Rolling P/E	Projected Yield	Forecast EPS Growth	Rolling P/E Rank in Sector	Forecast EPS Growth Rank in Sector	Projected Dividend Yield Rank in Sector	Broker consensus
Interserve PLC	Support Services	£2.03	4.63	8.67	23.38				Weak buy
Canillion PLC	Support Services	£2.88	7.60	4.90	57.39				Buy
Travis Perkins PLC	Support Services	£6.64½	7.89	1.57	-28.24				Buy
Atkins (W S) PLC	Support Services	£5.84	8.45	4.70	-25.90				Strong hold
Wolseley PLC	Support Services	£15.90	9.34	0.37	-82.04				Hold
BSS Group PLC	Support Services	£2.72¼	10.11	2.73	-23.06				Buy
RPS Group PLC	Support Services	£1.80½	10.48	2.31	-5.90				Strong hold
Babcock International Group PLC	Support Services	£5.25	10.93	3.20	37.58				Buy
eaga PLC	Support Services	£1.50¼	11.13	2.57	35.23				Buy
PayPoint PLC	Support Services	£3.80	11.49	5.41	-7.01				Hold
Xchanging PLC	Support Services	£1.87	11.98	1.55	15.91				Buy
Galiform PLC	Support Services	83½p	12.31		-26.22				Strong hold
MITIE Group PLC	Support Services	£2.28¼	12.62	3.35	12.55				Weak buy
Connaught PLC	Support Services	£3.00	12.69	1.23	50.66				Buy
De La Rue PLC	Support Services	£9.40	12.80	4.77	32.56				Hold
SIG PLC	Support Services	£1.19	13.78		-59.39				Weak buy
G4S PLC	Support Services	£2.75½	14.05	2.66	44.01				Buy
Bunzl PLC	Support Services	£6.96½	14.45	3.37	23.38				Strong hold
Regus PLC	Support Services	84½p	15.13	2.79	-54.04				Weak buy
Homeserve PLC	Support Services	£16.80	15.97	2.36	7.72				Weak buy
Experian PLC	Support Services	£6.15	16.36	2.09	-8.94				Hold
Intertek Group PLC	Support Services	£13.12	16.70	1.84	23.06				Weak buy
Aggreko PLC	Support Services	£10.34	16.83	1.13	40.52				Strong hold
Electrocomponents PLC	Support Services	£1.85	17.25	5.95	-24.04				Hold
VT Group PLC	Support Services	£6.72	17.42	2.35	32.27				Weak buy
Shanks Group PLC	Support Services	£1.16	17.99	2.50	-8.47				Buy
Premier Farnell PLC	Support Services	£1.86	18.10	5.06	-31.66				Weak hold
Filtrona PLC	Support Services	£1.88	18.19	4.14	81.32				Buy
Serco Group PLC	Support Services	£5.67	20.53	1.11	19.13				Buy
Ashted Group PLC	Support Services	85p	20.70	3.06	-98.96				Buy
Hays PLC	Support Services	£1.05	21.47	5.52	-55.21				Strong hold
Capita Group (The) PLC	Support Services	£7.22½	22.07	2.60	38.52				Strong hold
SThree PLC	Support Services	£2.89½	26.67	4.15	3.06				Buy
Rentokil Initial PLC	Support Services	£1.29	36.42		207.60				Strong hold
Michael Page International PLC	Support Services	£3.80	78.74	2.10	-86.54				Strong hold
Davis Service Group (The) PLC	Support Services	£4.07½							

In this Table, Rank columns have been used alongside columns containing actual data values. To add a Rank column, right click in one of the column headings and select **Add Rank Column...**

A dialog box will open which enables you to select dozens of different ranking criteria. Note that the **Add now** button in the dialog enables you to add multiple columns one after another.

To change the colour of the histograms in a column, right click in the column heading and select **Borders & shading...**

### Using Ranking in Data Mining

02 Filter Top Ranking - All sectors - Table 1											
No.	Name	Capital (Em)	Close	Yield	Projected Yield	Projected Dividend Yield Rank in Sector	Dividend cover	Rolling P/E	Rolling P/E Rank in Sector	Broker consensus	No. Analysts
1	United Utilities Group PLC	3,765.5	£5.52½	5.91	6.21		1.8	9.31		Weak buy	7
2	GAME Group (The) PLC	276.3	79½p	6.90	7.25		4.8	4.45		Weak buy	8
3	HMV Group PLC	292.7	69p	10.71	10.71		1.5	5.54		Hold	12
4	Interserve PLC	254.5	£2.03	8.37	8.67		2.1	4.63		Weak buy	14
5	Catlin Group Ltd	1,299.9	£3.62½	6.90	7.25		3.8	4.13		Buy	4
6	Marston's PLC	521.0	91½p	7.82	6.29		1.8	7.90		Buy	11
7	Bribic PLC	953.0	£4.38½	3.42	3.80		2.1	13.79		Buy	7
8	AstraZeneca PLC	42,538.9	£29.29	4.83	5.19		2.3	8.86		Weak hold	12
9	Thomas Cook Group PLC	2,007.5	£2.34	4.60	4.81		2.5	8.56		Weak buy	13
10	BP PLC	111,863.3	£5.96	5.92	5.89		1.6	10.62		Strong hold	7
11	FirstGroup PLC	1,715.1	£3.56½	5.26	5.78		2.8	8.74		Buy	11
12	Vodafone Group PLC	75,138.6	£1.42½	5.44	5.63		2.2	9.32		Sell	12
13	Drax Group PLC	1,472.2	£4.03½	3.40	7.58		2.3	11.19		Hold	4
14	Dairy Crest Group PLC	481.5	£3.61½	5.56	5.07		2.2	8.21		Buy	9
15	F&C Asset Management PLC	272.6	56p	10.73	10.73		-0.2	9.37		Buy	9
16	GlaxoSmithKline PLC	63,827.1	£12.29½	4.96	5.28		1.8	11.08		Buy	8
17	Beazley PLC	602.2	£1.12½	6.21	7.02		2.5	6.16		Buy	5

In this Data Mining filter, ShareScope has found all FTSE 350 companies which are in both the top quartile (i.e. cheapest) for rolling P/E and top quartile for projected yield in their sectors.

This gives you a list of mid to large cap stocks offering high yields at a low price. To add a Rank criterion, click on **Add Criterion** and select **Rank in sector** from the Data Mining Wizard.

Remember if you have any trouble finding or using any of these features, please don't hesitate to call our Customer Support team on **020 7749 8504**. They will be delighted to help.