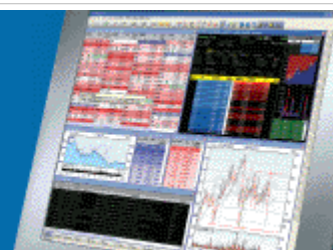


ShareScope Training Zone

Your guide to getting the best out of ShareScope



Tutorial 30 – ShareScope Library

In this week's tutorial, we take a look at the Library function in ShareScope.

You should by now be familiar with the concept of Settings in ShareScope. That is, there are 12 Settings that you can customise and save for each window type (**List, Historical Chart, Intraday Chart, Details**).

You can, however, save Settings to ShareScope's Library function which enables you to create an archive of many more Settings. These can be retrieved at any time and loaded into a current Setting.

ShareScope includes a number of pre-configured Library files which you can upload as required, and as an added bonus, we have included some additional Details Library files at the bottom of this page for you to try out.

Note: the Setting retrieved from the Library will overwrite the current Setting so make sure you have saved this if you wish to use it too in the future. To save your current settings click on the **File** menu and select **Save**.

- [Loading Library files](#)
- [Saving Library files](#)
- [Sharing files with other users](#)
- [Importing files](#)
- [Example Library files](#)

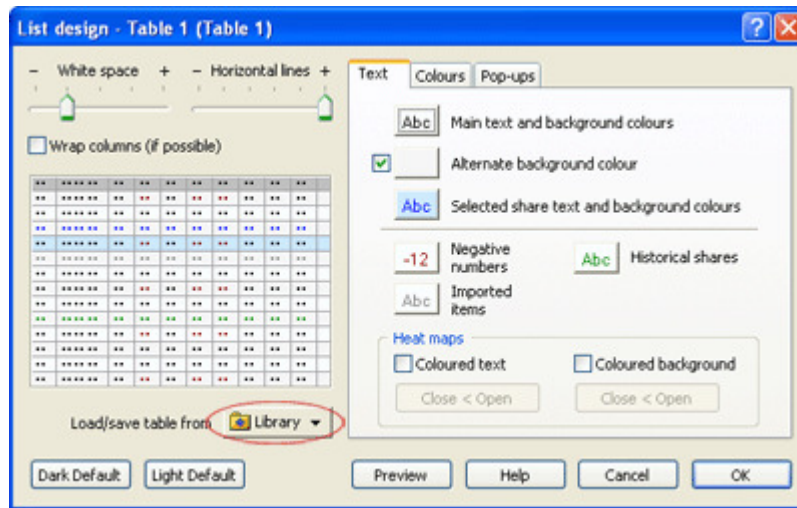
Loading Library files

The Library can be accessed from the **Design...** dialog in List, Graph and Details screens.

To view the Library:

1. Right-click in the middle of the screen to display the context menu.
2. Then:
In the List screen, select **List Design...** or;
In the Graph screen, select **Graph Design...** or;
In the Details screen, select **Details Design...**
3. This will display the **Design...** dialog. A **Library button** will appear at the bottom left of the screen, as illustrated below.

Note: The **Design...** dialog can also be accessed by pressing **Ctrl + D** on your keyboard.



Note: for simplicity, we will refer only to the List screen Library in the remainder of the tutorial.

Clicking on the **Library** button will display all the files currently stored in your Library folder.

In the list screen Library, you will notice there are five pre-configured files, next to which are descriptions of each table setting.

To load a table, simply click on the item you wish to upload. In this example, will use the **Market moves** setting.

You will be asked whether you wish to replace the current table with the new file.

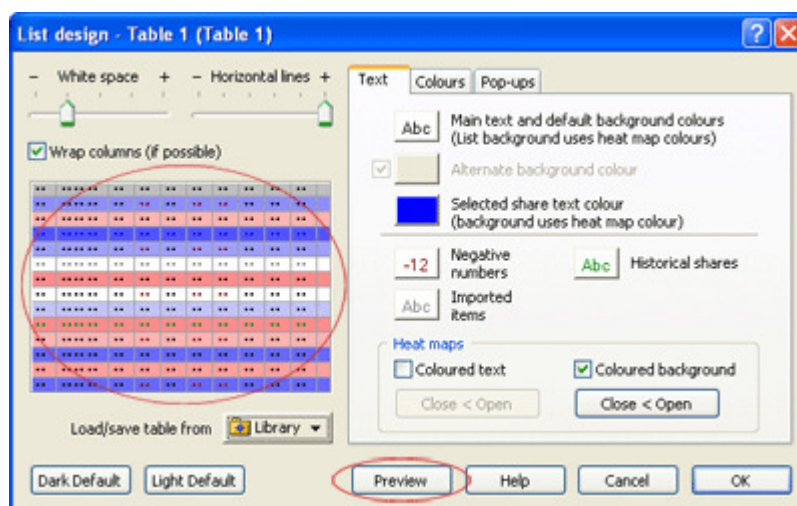
Dark Trigger dark_trigger.tab	[Plus/Pro only] Intraday market summary, EPIC, mid and mid% columns. Designed for use with FTSE100/250/350 lists.
Market moves heatMapEOD.tab	[All users] Heat map: summarises the market movements over the latest trading day
1 hour Heatmap heat_map_1hr.tab	[Plus/Pro only] Highlights very short-term market changes. Designed for use with FTSE100/250/350 lists.
Intraday general intraday_default.tab	[Plus/Pro only] General purpose intraday table and settings.
Light Trigger light_trigger.tab	[Plus/Pro only] Intraday market summary, EPIC, mid and mid% columns. Designed for use with FTSE100/250/350 lists.
Rank Columns rank_columns.tab	Example of how to set up some of the rank in sector columns.
test.tab	
Open library folder ...	
Add current table to library	

Note: this will overwrite changes to the currently active setting – for example, **Table 1**. If you wish to upload the **Market moves** setting to **Table 2**, you will first need to exit the **Design...** dialog and change the view to **Table 2** before continuing.



Once you have clicked **Yes**, a small preview of the **Market moves** table will appear just above the **Library** button in the **Design...** dialog.

To view a full size preview, click the **Preview** button.



If you are happy with the new setting, click **OK**. Please note this will overwrite your current

setting.

Note: if by mistake you overwrite a setting you did not intend to, you can shut down ShareScope without saving the changes you have made in the current session. To do this, click on the **Help** menu option and select **Support Toolbox**. In the following dialog, check the option **Shutdown program without saving** and click **OK**. Remember, this will not save ANY of the changes you have made since opening the program (or last did **File > Save**).

Saving Library files

To save a List, Graph or Details screen to the Library folder, open the **Design...** dialog in the respective screen and click on the **Library** button.

Click on the option **Add current table to Library** at the bottom of the list.

You will be asked to give the setting a name and description. In this example, we will name the file **Performance 2009** and provide a relevant description. Once you have done this click **OK**.

The new setting will appear alphabetically in the list of available Library files.

Light Trigger light_trigger.tab	[Plus/Pro only] Intraday market summary. EPIC, mid and mid% columns. Designed for use with FTSE100/250/350 lists.
Performance 20... Performance 2009.tab	Stock performance from 1st Jan 2009. Includes key metrics and sector ranking columns
Rank Columns rank_columns.tab	Example of how to set up some of the rank in sector columns.

Sharing files with other users

Library files are stored in the **\Library** folder in the **\ShareScope folder** and are saved in an ASCII format, which means they can be easily shared with other users.

To access the **Library** folder, click on the Help menu option and select **Open ShareScope folder**. Once this appears, locate and open the **Library** folder to display all your archived Library files. These can then be emailed as attachments to fellow ShareScope users or alternatively uploaded to the ShareScope discussion forum.

The *type* of Library file is denoted by its file extension. These correspond as follows:

.gri	intraday graph file
.grh	historical graph file
.tab	list table file
.dtl	details file

You may also notice files with the extension **.syn**. These are synthetic data files. More information about this feature can be found in **ShareScope Help**.

To visit the ShareScope forum, click the following link: <http://forums.sharescope.co.uk>.

We suggest that users upload Library files to the General Discussion section of the website. For more information on using the forums, please click on the following link: <http://forums.sharescope.co.uk/faq.php>

Note: for those who haven't visited the forum before, you will need to register before posting messages and/or files.

Importing files

You can import files you have received from other users or indeed those we have provided below in just a few simple steps:

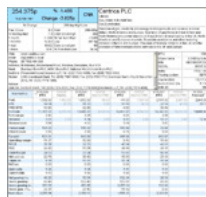
1. Open the **Design...** dialog from the context menu (or press Ctrl + D)
2. Click on the **Library** button
3. From the list, select **Open library folder...**
4. Copy and paste the required file into this directory

Note: you can also access the **Library** folder when the program is not running. To do this, right-click on the ShareScope icon on your desktop, and select **Properties** from the menu. In the dialog that appears, click on the **Shortcut** tab and then click the **Find Target...** button. This will open the ShareScope folder. Locate and open the **Library** folder.

Example Library files

To help you get started, we have provided two Library files for use in the Details screen.

Below are previews of each file. Click on the image to enlarge.



Name: Contact Portrait

Description: Portrait style page with contact details, company information and Key Metrics

[Click here](#) to download



Name: Intraday Full Screen (*Plus/Pro only*)

Description: Key company data with stock/sector charts and mid price information

[Click here](#) to download

To upload either file to ShareScope, simply click the download link and select the option **Save to Desktop**. You will then need to unzip the file(s) and then copy to your **Library** folder as outlined in the above section - Importing files.

Remember, if you have any trouble finding or using any of these features, please don't hesitate to call our Customer Support team. They will be delighted to help.

From outside London: 0845 045 0111
From London: 020 7749 8504
Email: support@sharescope.co.uk