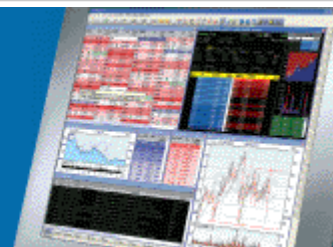


ShareScope Training Zone

Your guide to getting the best out of ShareScope



Tutorial 3 - How to find the biggest risers and fallers of the day

In this tutorial we are going to look at how to identify the day's biggest risers and fallers, both on an intraday and an end of day basis.

End of day
Intraday

End of day

Let's first look at how to create lists of the biggest risers and fallers on an end of day basis. That is, we will identify those stocks whose closing price has risen or fallen the most compared to the previous day's closing price. We can measure this in absolute (p) or relative (%) terms.

This will involve adding new columns to a List Table setting so go to the List screen and select a setting to edit.

Right-click in the column headings to display the context menu. Select **Add price column** and then select the **Price +/-** option. Notice that this displays the absolute price change (p) between the current day's close and the previous day's close.

Repeat the procedure but this time select **% Price +/-** from the menu. This will display the percentage increase or decrease in price.

Double-click in the column heading of either column to sort the list with the biggest risers at the top. Double-click in the column heading again to sort by the biggest fallers.

Below is an example List Table sorted to show the biggest risers in percentage terms.

No.	EPIC	Name	Close	Close +/-	Price %	Sector	Broker consensus	IC VIEW Important Disclaimer
1	FP	Friends Provident PLC	£1.63%	▲ 4½p	▲ 2.8	Life Insurance	Weak buy	Fairly Priced
2	BGY	British Energy Group PLC	£5.49	▲ 13½p	▲ 2.5	Electricity	Buy	Sell
3	WTB	Whitbread PLC	£14.00	▲ 26p	▲ 1.9	Travel & Leisure	Buy	Good Value
4	HMSO	Hammerson PLC	£10.25	▲ 16p	▲ 1.6	Real Estate	Hold	Good Value
5	RSA	Royal & Sun Alliance Insurance Group PLC	£1.48%	▲ 2½p	▲ 1.5	Nonlife Insurance	Buy	Sell
6	RRL	Rolls-Royce Group PLC	£5.46	▲ 7p	▲ 1.3	Aerospace & Defence	Strong hold	Good Value
7	AL	Alliance & Leicester PLC	£6.48	▲ 8p	▲ 1.3	Banks	Hold	High Enough
8	BLND	British Land Co PLC	£9.45	▲ 11½p	▲ 1.2	Real Estate	Buy	Buy
9	NXT	Next PLC	£16.24	▲ 19p	▲ 1.2	General Retailers	Weak buy	High Enough
10	LSE	London Stock Exchange Group PLC	£19.79	▲ 23p	▲ 1.2	General Financial	Strong hold	Fairly Priced
11	LGEN	Legal & General Group PLC	£1.30%	▲ 1½p	▲ 1.2	Life Insurance	Strong hold	Buy
12	SCTN	Scottish & Newcastle PLC	£7.41%	▲ 8½p	▲ 1.2	Beverages	Strong hold	Hold
13	LMI	Lonmin PLC	£30.93	▲ 32p	▲ 1.0	Mining	Weak sell	High Enough
14	FQP	FirstGroup PLC	£8.15	▲ 7p	▲ 0.9	Travel & Leisure	Buy	Buy
15	OCL	Carnival PLC	£22.19	▲ 19p	▲ 0.9	Travel & Leisure	Weak buy	Sell
16	IMT	Imperial Tobacco Group PLC	£27.12	▲ 23p	▲ 0.9	Tobacco	Strong hold	Good Value
17	MKS	Marks & Spencer Group PLC	£5.60	▲ 4½p	▲ 0.8	General Retailers	Weak buy	Good Value
18	MRW	Morrison (Wm) Supermarkets PLC	£3.22	▲ 2½p	▲ 0.8	Food & Drug Retailers	Strong hold	Good Value
19	HBOS	HBOS PLC	£7.35	▲ 5½p	▲ 0.8	Banks	Hold	Buy

You could customize separate Table Settings for risers and fallers.

ShareScope Plus and Pro customers may create more compact tables. The examples below show the top 10 FTSE 100 risers and fallers in separate windows.

No.	EPIC	Close	Close +/-	Price %
1	FP.	£1.63½	▲ 4½p	▲ 2.8
2	BGY	£5.49	▲ 13½p	▲ 2.5
3	WTB	£14.00	▲ 26p	▲ 1.9
4	HMSO	£10.25	▲ 16p	▲ 1.6
5	RSA	£1.48¼	▲ 2¼p	▲ 1.5
6	RR.	£5.46	▲ 7p	▲ 1.3
7	AL.	£6.48	▲ 8p	▲ 1.3
8	BLND	£9.45	▲ 11½p	▲ 1.2
9	NXT	£16.24	▲ 19p	▲ 1.2
10	LSE	£19.79	▲ 23p	▲ 1.2

No.	EPIC	Close	Close +/-	Price %
1	OML	£1.67½	▼ 4½p	▼ -2.6
2	SVT	£15.26	▼ 33p	▼ -2.1
3	TW.	£2.03¼	▼ 4¼p	▼ -2.0
4	ANTO	£7.17	▼ 14p	▼ -1.9
5	SSE	£16.38	▼ 29p	▼ -1.7
6	PSON	£7.32	▼ 10½p	▼ -1.4
7	ULVR	£18.90	▼ 27p	▼ -1.4
8	ITV	85½p	▼ 1¼p	▼ -1.4
9	LII	£10.77	▼ 14p	▼ -1.3
10	BSY	£6.19	▼ 8p	▼ -1.3

Intraday

ShareScope Plus and Pro users can also create **intraday** lists of risers and fallers. These lists will re-sort automatically.

This will also involve adding new columns to a List Table setting so go to the List screen and select a setting to edit.

Right-click in the column headings to display the context menu. Select **Add intraday column** and the following dialog will be displayed.

(This is the **Advanced** dialog – if you don't see this, click on the **Advanced >>** button in the bottom right of the dialog.)

We're going to add columns that display the difference between the current mid price and the previous day's close (although you could use the bid or offer price and measure from the day's open).

By default, the **Mid/Close** and **Price** options will be selected which is OK. Now select the **Change from previous close** option and then press **Add Now**. This adds the new column without closing the dialog. Now select the **% from previous close** option and this time select **OK**.

You now have two new **intraday** columns showing the absolute (p) and relative (%) changes between the latest mid price and the previous day's close.

Double-click in the column heading of either column to sort the list with the biggest risers at the top. Double-click in the column heading again to sort by the biggest fallers. The lists will automatically re-sort every five minutes. In the next release of ShareScope Plus and Pro you will be able to set the refresh rate yourself.

The example below is sorted to show the biggest risers in percentage terms.

No.	EPIC	Close	Mid +/- from close	Mid % from close
1	AL.	£6.48	▲ 91p	▲ 14.04
2	NXT	£16.24	▲ 44p	▲ 2.71
3	BARC	£5.04	▲ 13½p	▲ 2.68
4	SVT	£15.26	▲ 33½p	▲ 2.20
5	VED	£20.46	▲ 44½p	▲ 2.17
6	KGF	£1.45½	▲ 2¼p	▲ 1.92
7	BAY	£3.09¼	▲ 5¼p	▲ 1.82
8	LII	£10.77	▲ 18½p	▲ 1.72
9	LLOY	£4.72	▲ 8p	▲ 1.67
10	HBOS	£7.35	▲ 12p	▲ 1.63

Note: we have changed the column heading text here for a better fit. To do this, right-click in the column heading and select **Change heading**.

Heatmap

Plus and Pro users can also use ShareScope's Heatmap options to colour stocks based on whether their price has risen or fallen. Heatmap options can be found in the **List design** dialog.

Look at the examples below:

EPIC	Mid	Mid X Change	EPIC	Mid	Mid X Change	EPIC	Mid	Mid X Change	EPIC	Mid	Mid X Change
AL.	£7.35½	▲ 13.50	NG.	£8.41¼	▲ 0.87	SDR	£13.06½	▲ 0.35	IPR	£4.51¼	▼ -0.41
BARC	£5.18¼	▲ 2.53	BP.	£6.20¼	▲ 0.85	TLW	£6.53¼	▲ 0.27	RTO	£1.20¼	▼ -0.45
NXT	£16.64	▲ 2.46	HSBA	£8.48¼	▲ 0.80	LMI	£31.01	▲ 0.26	CPW	£3.43	▼ -0.47
VED	£20.92½	▲ 2.27	RDSB	£21.06½	▲ 0.79	EMG	£5.70¼	▲ 0.31	LGEN	£1.30	▼ -0.50
SVT	£15.58½	▲ 2.13	DGE	£10.88½	▲ 0.79	BG.	£11.53	▲ 0.26	IAP	£7.22¼	▼ -0.52
BAY	£3.15¼	▲ 1.78	STAN	£18.58	▲ 0.76	AAL	£30.88	▲ 0.26	IMT	£26.96½	▼ -0.57
LII	£10.94	▲ 1.58	VOD	£11.89	▲ 0.67	CNA	£3.59¼	▲ 0.24	PRU	£7.07¼	▼ -0.67
MKS	£5.68¼	▲ 1.56	WOS	£7.47¼	▲ 0.71	BT.A	£2.73¼	▲ 0.23	SCTN	£7.36	▼ -0.74
HBOS	£7.45¼	▲ 1.46	RIO	£53.49	▲ 0.60	BATS	£19.68½	▲ 0.18	YELL	£3.97	▼ -1.00
ABF	£9.12¼	▲ 1.45	BA.	£5.01¼	▲ 0.65	PSN	£8.00	▶ 0	BSY	£6.12¼	▼ -1.09
LLOY	£4.78¼	▲ 1.43	SSE	£16.48¼	▲ 0.64	CPI	£6.98¼	▲ 0.11	HOME	£3.24¼	▼ -1.11
CBRY	£6.29¼	▲ 1.41	LAND	£15.15¼	▲ 0.63	ITV	85¼p	▶ 0	ETI	£4.80¼	▼ -1.36
KGF	£1.47¼	▲ 1.41	ULVR	£19.02¼	▲ 0.66	RSA	£1.48¼	▶ 0	REX	£4.13¼	▼ -1.28
RBS	£4.50	▲ 1.32	CW.	£1.87	▲ 0.54	LSE	£19.78	▼ -0.05	CCL	£21.88¼	▼ -1.37
HMSO	£10.38½	▲ 1.32	UU.	£7.60¼	▲ 0.56	MRW	£3.22	▼ -0.04	KAZ	£13.52	▼ -1.39
OML	£1.69¼	▲ 1.25	JMAT	£18.90½	▲ 0.51	RTR	£6.36¼	▼ -0.04	XTA	£34.95	▼ -1.55
EXPN	£4.01¼	▲ 1.13	SBRY	£4.27¼	▲ 0.53	KEL	£10.84¼	▼ -0.05	FGP	£8.03¼	▼ -1.44
BLND	£9.55¼	▲ 1.11	ANTO	£7.20¼	▲ 0.52	RSL	£7.11¼	▼ -0.11	GFS	£2.41¼	▼ -1.48
FP.	£1.65¼	▲ 1.07	WPP	£6.50¼	▲ 0.50	SMIN	£10.11¼	▼ -0.15	ADM	£10.82	▼ -1.64
BLT	£15.61¼	▲ 1.00	TSCO	£4.80	▲ 0.55	SGE	£2.29¼	▼ -0.16	WTB	£13.76	▼ -1.71
BGY	£5.54¼	▲ 1.05	SN.	£5.82¼	▲ 0.43	RR.	£5.45	▼ -0.18	SHP	£11.25¼	▼ -2.05
SAB	£14.30¼	▲ 1.02	TW.	£2.04¼	▲ 0.43	AV.	£6.71	▼ -0.30	CNE	£30.01¼	▼ -2.36
III	£10.13¼	▲ 1.05	AZN	£21.72¼	▲ 0.39	AMEC	£8.36¼	▼ -0.27	TCG	£2.75¼	▼ -2.44
CPG	£3.11¼	▲ 0.93	PSON	£7.34¼	▲ 0.38	REL	£6.77¼	▼ -0.29	TT.	£2.85¼	▼ -2.72
RB.	£29.40¼	▲ 0.91	GSK	£12.82¼	▲ 0.27	SL.	£2.52	▼ -0.35	IHG	£8.59¼	▼ -2.74

Here we have created a heatmap of the FTSE 100 with the following features:

- The list is sorted by the intraday **% from previous close** column (renamed *Mid % Change*).
- The stocks are also coloured based on their relative (%) price change from the previous close. In this example, only stocks that have risen or fallen by 2% or more are displayed in the solid blue/red; the other stocks are shaded depending on the strength of their price change.
- The simple three column format has been wrapped to fit the whole list into one window. To wrap the columns like this, select the **Wrap columns** option from the left hand side of the

List design dialog.

This window shows us not just the biggest risers and fallers but also a snapshot of the market as a whole (in this case, more bullish than bearish).

Alternatively, you could create smaller hotlists for both the biggest intraday risers and biggest intraday fallers. See the examples below:

No.	EPIC	Mid	Mid % Change
1	AL.	£7.41½	▲ 14.43
2	BARC	£5.17½	▲ 2.63
3	NXT	£16.65	▲ 2.52
4	VED	£20.93½	▲ 2.32
5	SVT	£15.58½	▲ 2.13
6	BAY	£3.15½	▲ 1.90
7	LII	£10.95	▲ 1.67
8	LLOY	£4.79	▲ 1.48
9	MKS	£5.68	▲ 1.43
10	ABF	£9.12½	▲ 1.45

No.	EPIC	Mid	Mid % Change
1	TT.	£2.85½	▼ -2.81
2	IHG	£8.61	▼ -2.60
3	CNE	£30.06	▼ -2.21
4	TCG	£2.76	▼ -2.13
5	WTB	£13.72½	▼ -1.96
6	XTA	£34.82	▼ -1.92
7	SHP	£11.30½	▼ -1.61
8	ADM	£10.83	▼ -1.55
9	KAZ	£13.50	▼ -1.53
10	CCL	£21.86	▼ -1.49

The lighter shaded areas (on BARC and VED on the left; XTA and CCL on the right) are intraday price changes occurring.

Remember if you have any trouble finding or using any of these features, please don't hesitate to call our Customer Support team. They will be delighted to help.

From outside London: 0845 045 0111
 From London: 020 7749 8504
 Email: support@sharescope.co.uk