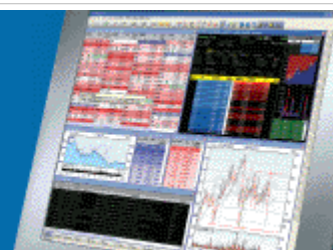


ShareScope Training Zone

Your guide to getting the best out of ShareScope



Tutorial 27 - Zooming in on ShareScope charts

At the recent IX Investor show at London ExCeL, we spoke to a number of members who were unaware of some of the enhanced functionality available within ShareScope.

One of the features that many users were impressed with was the [Timescale scroll bar](#) in the graph screen, which can be used to quickly zoom in on a particular date range and also to scroll through the entire price history.

As such, we focus this tutorial on the different ways you can limit the date range in the graph screen.

Remember, you can keep track of all the latest software enhancements via the "What's New?" section under the Help menu in ShareScope.

In this tutorial:

- [Limit Date Range](#)
- [Click and drag functionality](#)
- [Timescale scroll bar](#)
- [Toolbar Buttons](#)
- [Keyboard shortcuts](#)

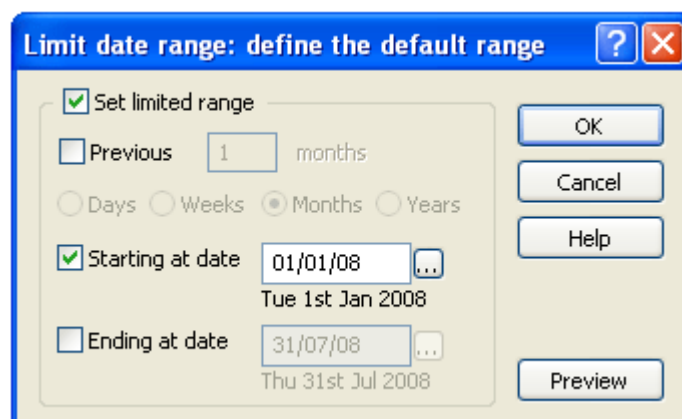
Limit Date Range

One of the more precise methods of specifying a date range on the graph screen is by using the Limit Date Range function.

To access this option, right-click in the middle of the graph screen and select **Limit Date Range** from the context menu. From the sub-menu, click on **Set Date Range...**



From this dialog, you can select to view either a defined number of days, weeks, months or years and/or enter specific start and end dates.



When selecting a specific start or end date, you can enter the date parameters in one of three ways:

1. Type a date into the date box
2. Hover the cursor over the date which appears under the date box, and use the arrows to move the date backwards/forwards.
3. Click on the ... button to the right of the date box to select from a calendar.

Once you have made your selection, click **OK**.

To toggle between your chosen limited range and the full data range available, simply double-click in the middle of the graph screen.

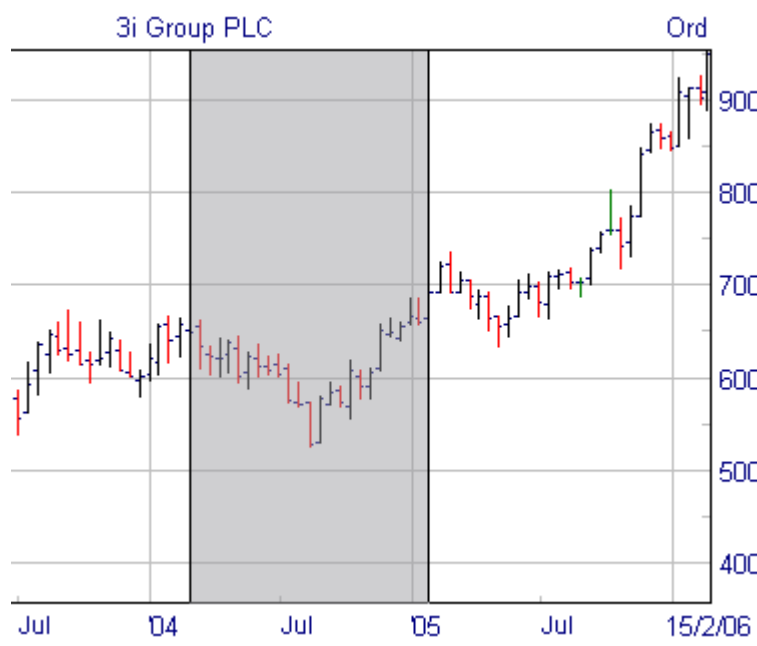
To permanently turn-off the Limit Date Range setting, right-click in the middle of the screen, and de-select **Limit Date Range** on the context menu.

Note: limiting the date range will apply to all graphs in the current Graph Setting.

Click and drag functionality

You can zoom in on a particular area of a graph by clicking and dragging over the area you want to see in more detail. This is a great way to temporarily look at different parts of the graph.

As you drag the mouse, you will notice that the selected area will be highlighted in a purple colour, as illustrated below. Once you are happy with your selection, release the mouse button to zoom in on the area of interest.



Once zoomed in, you can scroll the graph left/right using the left/right arrow keys on your keyboard.

If you limit the date range too much, you can click on the vertical scale to the left or right of graph to expand in that direction. This area is highlighted by the red arrows in the image below:

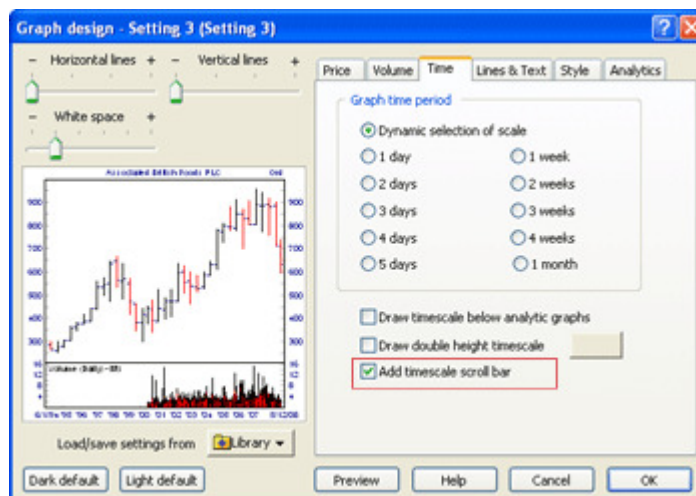


To return the graph to its original size, double-click in the middle of the screen.

Timescale scroll bar (historical graphs only)

The Timescale scroll bar is a multi-functional tool that allows you to zoom in and out of a price chart and, once zoomed in, scroll through the price history of a given stock.

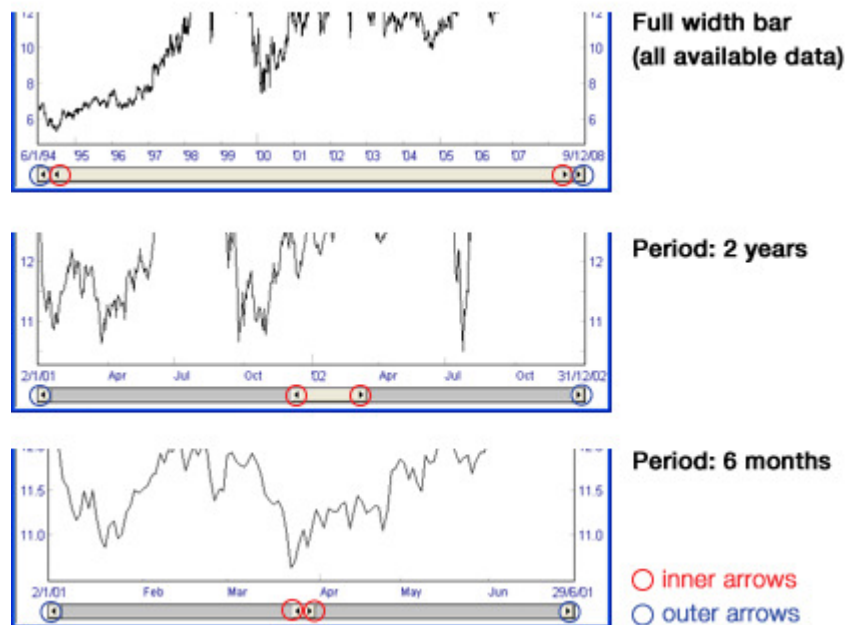
To add the Timescale scroll bar, right-click on the middle of the graph screen and select **Graph Design...** from the context menu. In the dialog that appears, click on the **Time** tab and tick the **Add timescale scroll bar** option. Click **OK**.



You will notice that a scrollbar now appears just below the main graph screen.



There are two sets of arrows at each end of the scroll bar.



Outer arrows: these allow you to scroll through the time period in either direction. Click on the right arrow to scroll to more recent data, or click on the left arrow to see older data.

Note that if you are already viewing the entire price history (i.e. the scroll bar is set to its full width), you will not be able to move left or right.

Inner arrows: the inner arrows allow you to extend or reduce the time period displayed on the graph.

To illustrate, let's look at the following example:

The graph below shows a price chart showing data from 2nd January 2008 to present. To reduce the time frame, click and drag the left inner arrow to make the bar narrower. You will notice that the arrows on the inner bar turn red. This changes the start date but not the end date. As you can see, the more you decrease the width of the scroll bar, the more you are able to zoom in.



You can click and drag the scroll bar (not the arrows) to scan through the price history of the stock. Notice how this maintains the same data parameters (in this case 3 months) as you move backwards and forwards.



Data range: 3 months
End date: December 2008



Data range: 3 months
End date: December 2007

To zoom in with increase accuracy, you can choose to display a **double height timescale** which will display days/months on a separate line to the year for increased clarity.



To add this feature, right-click on the middle of the graph screen and select **Graph Design...** from the context menu. In the dialog that appears, click on the **Time** tab and tick the **Draw double height timescale** option. Click **OK**.



Toolbar Buttons (historical graphs only)

There are six available toolbar buttons in ShareScope that allow you to limit the date range, set at fixed intervals, using a single click of the mouse.

These appear as follows:



Limit date range of display to 1 month



Limit date range of display to 3 months



Limit date range of display to 6 months



Limit date range of display to 1 year




Limit date range of display to 2 years



Limit date range of display to 5 years

By default, these are not displayed on the graph toolbar, so you will need to add them via the Customise Toolbars... dialog. For more information, please refer to [Tutorial 21 - Customising Toolbars](#).

Note: pressing shift and clicking on the Limit Date Range toolbar button , accesses the Limit Date Range dialog which allows you to set the time period displayed.

Keyboard shortcuts (historical graphs only)

As an alternative to the above toolbar buttons, you can use keyboard shortcuts to change the range on a graph.

Again there are six available options and the default keyboard settings are as follows:

Shift + 1	Limit date range of display to 1 month
Shift + 2	Limit date range of display to 3 months
Shift + 3	Limit date range of display to 6 months
Shift + 4	Limit date range of display to 1 year
Shift + 5	Limit date range of display to 2 years
Shift + 6	Limit date range of display to 5 years

Note: when using the toolbar buttons or the keyboard, the date range will be limited to the period ending at whatever date is shown at the bottom right of the graph.

Remember, if you have any trouble finding or using any of these features, please don't hesitate to call our Customer Support team. They will be delighted to help.

From outside London: 0845 045 0111
From London: 020 7749 8504
Email: support@sharescope.co.uk