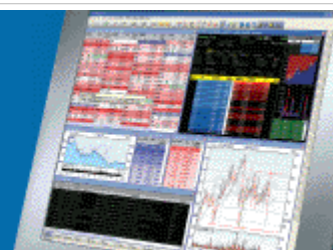


ShareScope Training Zone

Your guide to getting the best out of ShareScope



Tutorial 26 – Alarms

Version 5.3 of ShareScope included a major upgrade to the Alarm feature in the program, providing enhanced functionality for both end of day and intraday alarms.

In this tutorial:

- [Setting an alarm](#)
- [Setting an end-of-day alarm](#)
- [Setting an Intraday alarm \(ShareScope Plus/Pro\)](#)
- [List and Portfolio Alarms](#)
- [Reviewing Alarms](#)
- [Deleting Alarms](#)
- [Triggered Alarms \(ShareScope Gold\)](#)
- [Triggered Alarms \(ShareScope Plus/Pro\)](#)
- [View Triggered Alarms](#)
- [Re-triggering Alarms](#)
- [Deleting Alerts](#)
- [View Cycling](#)
- [Linking Windows \(ShareScope Plus/Pro\)](#)
- [Alarm options](#)

The Alarms suite can be categorised into the following two areas:

- **Alarms** lists all the alarms currently set.
- **Alerts – triggered alarms** lists only the alarms that have been triggered.

To move between the two, use the **View** menu in ShareScope Gold or **View: Change Window** in ShareScope Plus/Pro.

In ShareScope Plus/Pro you may find it useful to set up a new layout which has these views on it.

Alternatively, you can customise your toolbar and add buttons to quickly change between views. See Tutorials [11](#) and [21](#) for information how.



Note: If you have added these buttons to the toolbar in ShareScope Plus/Pro, clicking them will change the current window to the selected view; holding the **shift key** and **clicking** them opens the selected view in a new window.

Setting an alarm

You can set an alarm on an individual share, on a selected list of shares or on all shares within a portfolio. To set an alarm select one of the following from the **Edit** menu:

On an individual share or the parent list.

ShareScope Gold

Set an alarm for Prudential PLC
Set an alarm for FTSE 100 list

ShareScope Plus/Pro

Set an end-of-day alarm for Prudential PLC
Set an end-of-day alarm for FTSE 100 list
Set an intraday alarm for Prudential PLC
Set an intraday alarm for FTSE 100 list

On an individual share or the current portfolio.

ShareScope Gold

Set an alarm for Prudential PLC
Set an alarm for portfolio 'My Holdings'

ShareScope Plus/Pro

Set an end-of-day alarm for Prudential PLC
Set an end-of-day alarm for portfolio 'My Holdings'

Set an intraday alarm for Prudential PLC
Set an intraday alarm for portfolio 'My Holdings'

You can also set an alarm on a selected share from the context menu.

ShareScope Gold:

Right click in a list view and select from the context menu **Set an alarm for...**

Set an alarm for 3i Group PLC
Share's Alarms
Share's Alerts

We will cover Share's Alarms and Share's Alerts in more detail later in this tutorial.

ShareScope Plus/Pro:

Right click on a share in a list view and select from the context menu **Set alarm on share**, then choose between an **intraday** or **end-of-day alarm**.

Set alarm on share
Share's Alarms
Share's Alerts

Set an intraday alarm for 3i Group PLC
Set an end-of-day alarm for 3i Group PLC

Alarms can also be set from toolbar buttons. Please refer to Tutorial 11 and 21 for information on how to customise the toolbar.

Set alarm on share
Set alarm on list

Note:In ShareScope Plus/Pro setting alarms from the toolbar buttons will default to setting an intraday alarm.

Once you have selected to set an alarm you will see a wizard similar to the examples below, depending on the type of alarm you have chosen.

Setting an end-of-day alarm

This alarm will trigger after the markets have closed and ShareScope has updated its data.

You can set alarms for a wide range of events. The latest release of ShareScope (5.3) has added the ability to set alarms on **Director's dealings**, **News stories**, **Moving averages**, **MACD**, **RSI** and **Stochastic**, as well as the previous alarm types.

Example:

In this example we will select **Price rise / fall**.

At this point you can also configure end-of-day alarm options using the **Options** button or navigate **< Back** to change the share/list you are setting an alarm for.

Select **Next** to continue setting an alarm for your chosen share.

With the latest upgrade to alarms in ShareScope, new parameters are available to trigger price rise / fall events in addition to the existing ones; you can now specify **open**, **high**, **low** and **stop-gain** criteria; and stop-loss and stop-gain can now be specified from a start date.

In this example we have set the alarm to be triggered if the **Close** falls by 5% in 1 day.

If you make a mistake or wish to change an option on the previous screen use the **< Back** button.

To save and add another alarm to the same share click **Add now**. To save and exit the alarm wizard click **Finish**.

Setting an Intraday alarm (ShareScope Plus/Pro)

You can set an intraday alarm in the same way as an end-of-day alarm. These alarms will trigger

while you are connected and receiving intraday data. For ShareScope Pro users, this enables you to react to events as they happen.

The latest event types to be added to intraday alarms include:

- Unscheduled auctions
- Bid / offer / trade price rise or fall

In the following example we have set an alarm to trigger if an **unscheduled auction** takes place.

At this point you can also configure intraday alarm options using the **Options** button or navigate **< Back** to change the share/list you are setting an alarm for, or even further back to change to an end-of-day alarm.

The final stage of setting an intraday alarm is to specify how you would like to be notified of a triggered alarm. The new ways in which you can be notified include **pop-ups**, **sounds** and the ability to be alerted by **email**.

Once you have made your selection, click **Finish**.

For further help on the types of alarms you can set and the different alert options press **F1** while in

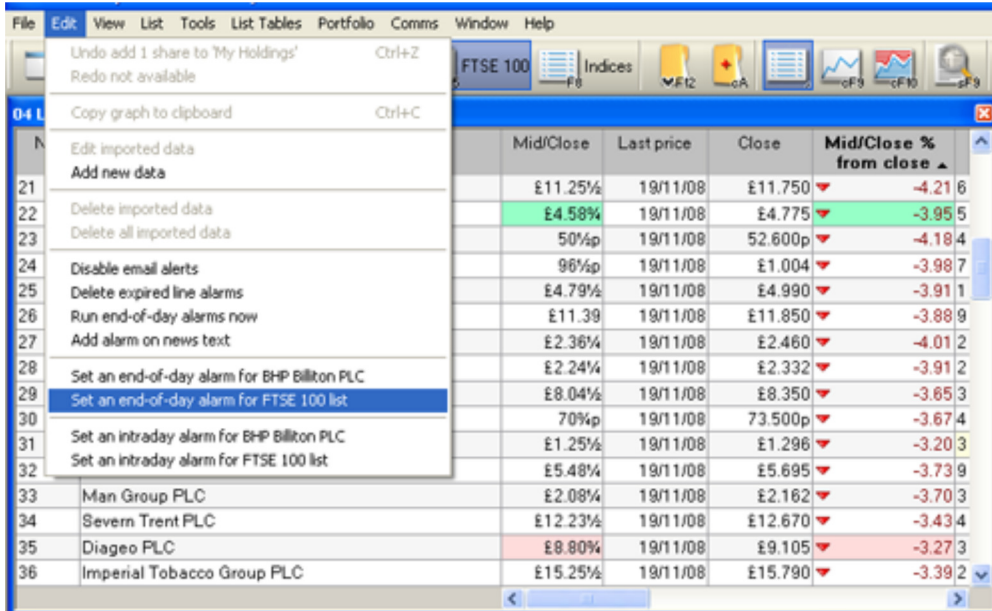
the Wizard at any time.

List and Portfolio Alarms

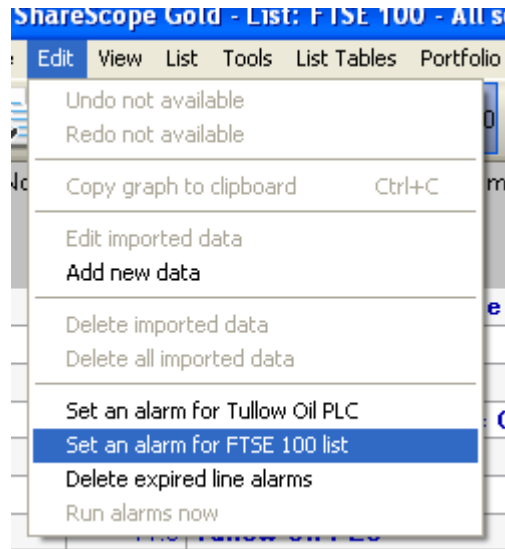
To set an alarm on a list or portfolio of shares change your view to the list or portfolio you require. From the **Edit** menu select **Set an alarm for ____ list** or **Set an alarm for portfolio '____'**.

In ShareScope Plus/Pro this can be an **end-of-day** alarm or an **intraday** alarm.

In this example the option to: **Set an end-of-day alarm for the FTSE 100 list** of shares has been selected.



In ShareScope Gold this will appear as:



The Alarms Wizard will take you through the steps to configure the alarm.

Reviewing Alarms

To review your current alarms, change to the **Alarms** view. You can select it from the **View** menu in ShareScope Gold and **View: New Window** in ShareScope Plus/Pro.

When you open the Alarms view in this way, it displays all alarms for shares and lists/portfolios.

| No. | Name | Alarm Type | Description | End-of-Day / Intraday | No. of alerts |
|-----|----------------|-----------------|-----------------------------------|-----------------------|---------------|
| 1 | 3i Group PLC | Unscheduled auc | Unscheduled auction | Intraday | 0 |
| 2 | 3i Group PLC | Perc. fall | Mid falls 2.5% from close | Intraday | 1 |
| 3 | BG Group PLC | Price fall | Offer falls below £7.385 | Intraday | 0 |
| 4 | Man Group PLC | News | News alarm | Intraday | 0 |
| 5 | Prudential PLC | Perc. change | Open changes 5% in one day | End-of-day | 0 |
| 6 | List: FTSE 100 | RSI | 20 RSI (Wilder): high & low cross | End-of-day | 0 |

In this example there are five alarms set up for individual shares and one alarm set for list (the FTSE 100).

To view just the alarms for a single share select the share from a list view, right click to bring up the context menu and select **Share's Alarms**.

| No. | Name | Alarm Type | Description | End-of-Day / Intraday | No. of alerts |
|-----|-------------------------|-----------------|-----------------------------------|-----------------------|---------------|
| 1 | 3i Group PLC | Unscheduled auc | Unscheduled auction | Intraday | 0 |
| 2 | 3i Group PLC | Perc. fall | Mid falls 2.5% from close | Intraday | 1 |
| 3 | 3i Group PLC (FTSE 100) | RSI | 20 RSI (Wilder): high & low cross | End-of-day | 0 |

In this example, 3i Group PLC has three alarms set, two individual alarms and one list alarm (set from the FTSE 100 list).

From here you can perform actions on your alarms. Right click to bring up the context menu to **edit, delete, copy, add new** and show either **end-of-day** or **intraday alarms** (in ShareScope Plus/Pro).

To edit an alarm, double left click on the alarm to bring up the alarms wizard. You can now amend the existing alarm properties.

Deleting Alarms

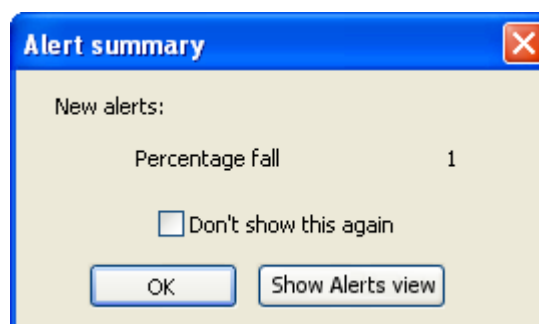
To delete alarms from the Alarms view, highlight the alarm you wish to delete, right click and select **Delete Alarm**. You will be prompted to confirm your choice. Deleting an alarm also deletes all associated alerts.

You can delete all alerts associated with an alarm without deleting the alarm by highlighting the alarm, right clicking and selecting **Delete all alerts for this alarm**.

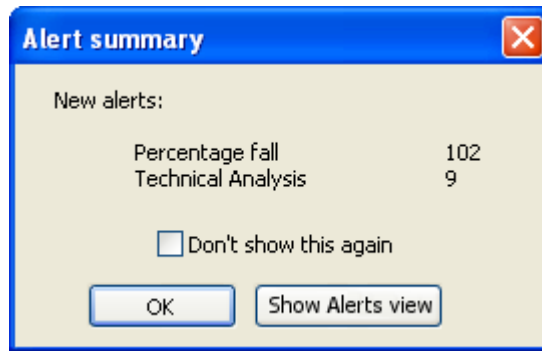
Triggered Alarms (ShareScope Gold)

In ShareScope Gold an **alert summary** dialog will notify you of how many alerts you have by event type. This is displayed after you have performed an update.

In the first example, one alert has been generated from a triggered alarm.



In the second example, two different alarm types have been triggered multiple times.

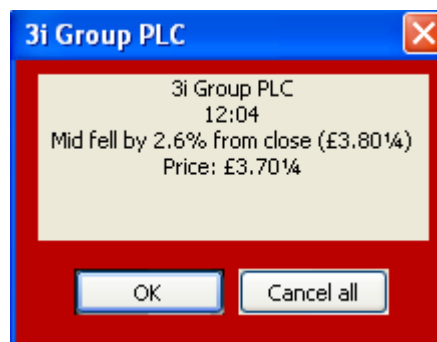


To dismiss the alert summary dialog click **OK**. For a list of the current alerts click [Show Alerts view](#).

Triggered Alarms (ShareScope Plus/Pro)

In ShareScope Plus/Pro you will be notified by the means you selected through the [Alarms Wizard](#).

The default way in which you will be alerted is by a pop-up message.



To dismiss pop-up alerts click **OK**. If an alarm for a portfolio or list has been triggered you will receive an alert for each individual share that matched the alarm criteria. In this instance you can click **Cancel all** to dismiss all pop-ups associated with this alarm, on screen and those that have yet to appear.

The number of pop-ups that can appear on your screen when an alarm has been triggered is set in the [Intraday alarms options](#).

To set this go to **Tools: Options: Intraday alarms** and select the number of pop-up alerts from the **Maximum number of pop-up alerts** drop down box.

View Triggered Alarms

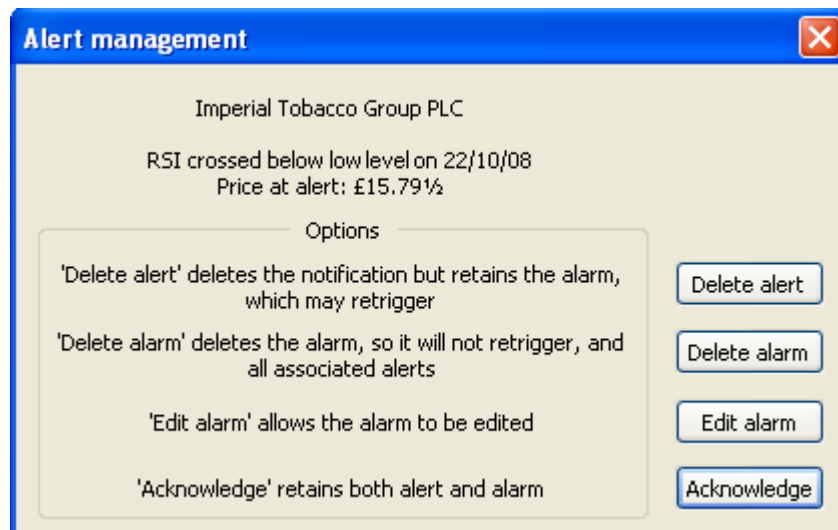
To view alerts for triggered alarms select **Alerts – triggered alarms** from the **View** menu in ShareScope Gold and from **View: New Window** in ShareScope Plus/Pro.

| No. | Name | Alert description | End-of-Day / Intraday | Triggered | Colour | New | Alert Price |
|-----|----------------------------|------------------------------|-----------------------|-----------|--------|-----|-------------|
| 1 | Imperial Tobacco Group PLC | RSI crossed below low level | End-of-day | 20/10/08 | | * | £15.78% |
| 2 | Imperial Tobacco Group PLC | RSI crossed below low level | End-of-day | 20/10/08 | | * | £15.83% |
| 3 | Fresnillo PLC | RSI crossed below low level | End-of-day | 20/10/08 | | * | £1.25% |
| 4 | RSA Insurance Group PLC | RSI crossed above high level | End-of-day | 20/10/08 | | * | £1.37% |
| 5 | Alliance Trust PLC | RSI crossed above high level | End-of-day | 20/10/08 | | * | £2.50% |
| 6 | Kingfisher PLC | RSI crossed above high level | End-of-day | 20/10/08 | | * | £1.17% |
| 7 | Thomson Reuters PLC | RSI crossed above high level | End-of-day | 20/10/08 | | * | £12.29 |

New alerts appear in bold and contain an asterisks (*) in their **New** column. An alert will remain in the list of alerts until it is deleted.

To see details of a selected alert, simply double left click on the alert. All alerts except news alerts and line alerts will open the **Alert management** dialog. News alerts will open the associated news article that triggered the alarm and graph alerts will take you to a graph of the share.

The action of double left clicking will also mark the alert as read, consequently removing the bold formatting from the alert and the asterisks (*) from the **New** column.



From the **Alert management** dialog you can also [Delete alert](#), [Delete alarm](#) and [Edit alarm](#). Please refer to corresponding topic in this tutorial or ShareScope help for further information on these buttons.

Once you have finished click **Acknowledge** to return to the list of alerts.

Right clicking on the selected alert will bring up the context menu where you can perform similar actions to the Alert management dialog. You can also perform actions on all alerts from the context menu such as **Mark all alerts read** and **Mark old alerts read**.

To perform an action on a selection of alerts hold the **shift** key while selecting a continuous group of alerts or hold the **Ctrl** key while selecting individual alerts to form a group. Right click on any alert within the group and select an action to be performed from the context menu.

The Alerts view can be restricted to show just end-of-day, intraday, all and new alerts. Right click in the **Alerts view** and select **Show...** and then your choice of filter.

- Show intraday alerts only
- Show end-of-day alerts only
- Show all alerts
- Show new alerts only

Re-triggering Alarms

An end-of-day alarm will re-trigger the following market day regardless of whether the alert(s) for the previous day(s) has been read or not.

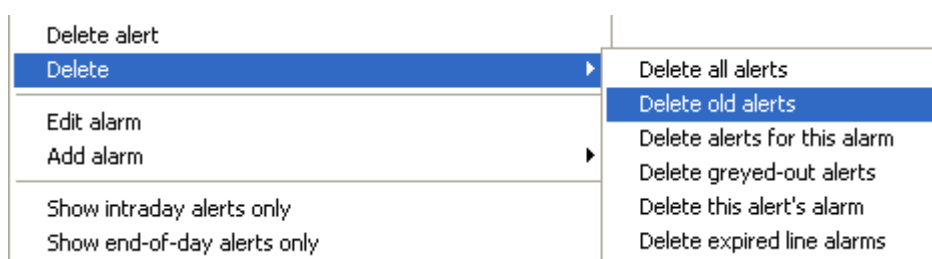
An Intraday alarm will re-trigger when you have read the existing share's alert generated by the alarm, the conditions of the alarm have been satisfied again, and the time between re-triggering has elapsed.

To set the time between an alarm re-triggering go to: **Tools: Options: Intraday alarms** and check the option **Interval after alert is read before alarm can retrigger**. You can then specify a time in minutes.

Deleting Alerts

To delete an alert from the Alerts view, select the alert(s) you wish to delete, right click on the alert and select **Delete Alert**.

Further deleting options are available from the **Delete** sub-menu.



In this example we are deleting all old alerts. Old alerts are either intraday alerts or end-of-day alerts triggered before the current day.

You can also delete alerts from the [Alarms view](#).

View Cycling

ShareScope's normal view cycling is available in the Alerts view but not the Alarms view because an alert is always related to a single share, while alarms can be related to entire lists and portfolios.

The Alerts view takes the place of the List view.

To cycle between views use the **Enter** key to cycle forward and **Esc** (or shift enter) to cycle backwards.

Linking Windows (ShareScope Plus/Pro)

You can link both the Alarms window and the Alerts window to other windows such as the List, Detail or Graph window in ShareScope Plus/Pro.

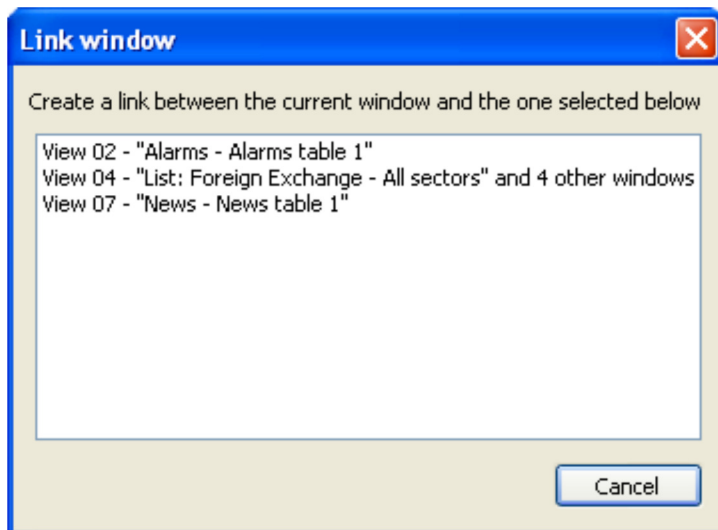
| No. | Name | Mid/Close | Last price | Close | lid/Close % from |
|-----|--------------------------------|-----------|------------|---------|------------------|
| 31 | Reed Elsevier PLC | £5.28¼ | 19/11/08 | £5.255 | |
| 32 | Reckitt Benckiser Group PLC | £26.32 | 19/11/08 | £27.000 | |
| 33 | Prudential PLC | £2.65 | 19/11/08 | £2.940 | |
| 34 | Petrofac Ltd | £3.25½ | 19/11/08 | £3.392 | |
| 35 | Pearson PLC | £5.90 | 19/11/08 | £5.955 | |
| 36 | Old Mutual PLC | 48½p | 19/11/08 | 52.600p | |
| 37 | Next PLC | £10.39½ | 19/11/08 | £9.300 | |
| 38 | National Grid PLC | £6.60¼ | 19/11/08 | £6.900 | |
| 39 | Morrison (Wm) Supermarkets PLC | £2.50¼ | 19/11/08 | £2.503 | |
| 40 | Marks & Spencer Group PLC | £2.11¼ | 19/11/08 | £2.000 | |
| 41 | Man Group PLC | £2.24 | 19/11/08 | £2.162 | |

| No. | Name | Alarm Type | Description | End-of-Day / Intraday | No. of |
|-----|----------------|-----------------|----------------------------|-----------------------|--------|
| 1 | 3i Group PLC | Unscheduled auc | Unscheduled auction | Intraday | 0 |
| 2 | 3i Group PLC | Perc. fall | Mid falls 2.5% from close | Intraday | 1 |
| 3 | BG Group PLC | Price fall | Offer falls below £7.385 | Intraday | 0 |
| 4 | Man Group PLC | News | News alarm | Intraday | 1 |
| 5 | Prudential PLC | Perc. change | Open changes 5% in one day | End-of-day | 0 |

The above example displays a FTSE 100 list and an Alarms window showing current alarms. Linking these windows allows you to see the alarms that are set for share for FTSE 100 stocks.

To link windows, right click on the blue title bar (in this case "03 List: FTSE 100") and then select **Link window....**

The Link window dialog will appear with the available windows for linking. Select the window you wish to link to by left clicking on it in the list.



Note that the FTSE 100 List window itself will not appear in the Link window dialog.

In this example we select **View 02 - "Alarms - Alarms table 1"**. The "View 02" may appear as a different view number in your ShareScope.

The result is a list window which we can select shares from and immediately see current alarms set for that share in the alarms view.

| No. | Name | Mid/Close | Last price | Close | lid/Closi % from |
|-----|------------------------------------|---------------|-----------------|---------------|---------------------|
| 79 | BT Group PLC | £1.27 | 19/11/08 | £1.252 | |
| 80 | British Sky Broadcasting Group PLC | £3.93% | 19/11/08 | £3.632 | |
| 81 | British Land Co PLC | £4.88% | 19/11/08 | £5.060 | |
| 82 | British Energy Group PLC | £7.50% | 19/11/08 | £7.575 | |
| 83 | British American Tobacco PLC | £16.37 | 19/11/08 | £16.890 | |
| 84 | British Airways PLC | £1.35% | 19/11/08 | £1.312 | |
| 85 | BP PLC | £4.90% | 19/11/08 | £4.880 | |
| 86 | BHP Billiton PLC | £8.84% | 19/11/08 | £8.240 | |
| 87 | BG Group PLC | £8.15% | 19/11/08 | £8.070 | |
| 88 | Barclays PLC | £1.45 | 19/11/08 | £1.296 | |
| 89 | BAE SYSTEMS PLC | £3.18% | 19/11/08 | £3.297 | |

| No. | Name | Alarm Type | Description | End-of-Day / Intraday | No. of alerts |
|-----|--------------------------------|------------|-----------------------------------|--------------------------|------------------|
| 1 | BG Group PLC | Price fall | Offer falls below £7.385 | Intraday | 0 |
| 2 | BG Group PLC (FTSE 100) | RSI | 20 RSI (Wilder): high & low cross | End-of-day | 0 |

As can be seen in this example, BG Group PLC has been selected in the FTSE 100 List window and the Alarms window has refreshed to show those alarms set for the share.

You can also link the Alerts window in the same way. Linking the Alerts window will show you the current alerts for the selected share.

| 02 Alarms - Alarms table 1 (Linked) | | | | | |
|-------------------------------------|----------------|-----------------|-----------------------------------|-----------------------|---------------|
| No. | Name | Alarm Type | Description | End-of-Day / Intraday | No. of alerts |
| 1 | 3i Group PLC | Perc. fall | Mid falls 2.5% from close | Intraday | 1 |
| 2 | 3i Group PLC | Unscheduled auc | Unscheduled auction | Intraday | 0 |
| 3 | BG Group PLC | Price fall | Offer falls below £7.385 | Intraday | 0 |
| 4 | Man Group PLC | News | News alarm | Intraday | 0 |
| 5 | Prudential PLC | Perc. change | Open changes 5% in one day | End-of-day | 0 |
| 6 | List: FTSE 100 | RSI | 20 RSI (Wilder): high & low cross | End-of-day | 0 |

| 02 Alerts for single alarm - Alerts table 1 (Linked) | | | | | | | |
|--|--------------|-----------------------------------|-----------------------|-----------|--------|-----|------------|
| No. | Name | Alert description | End-of-Day / Intraday | Triggerec | Colour | New | Alarm Note |
| 1 | 3i Group PLC | Mid fell by 2.6% from close (£3.8 | Intraday | 20/11/08 | | | |

In this example the Alert window is linked to the Alarm window. By selecting an alarm in the Alarms window the alert for the selected alarm will appear in the Alerts window.

To unlink a window, right click on the title bar and select **Unlink window**. You can also reach this option by selecting a window and going to Window on the menu bar.

Alarm options

You can customise the behaviour of alarms and alerts from the ShareScope options dialog. There have been significant changes to this dialog box for both ShareScope Gold and Plus/Pro.

To access alarm options go to:

- **Tools: Options: End-of-day alarms** for ShareScope Gold/Plus/Pro.
- **Tools: Options: Intraday alarms** for ShareScope Plus/Pro.

For further information on individual settings within either alarms tab please see ShareScope help.

Remember, if you have any trouble finding or using any of these features, please don't hesitate to call our Customer Support team. They will be delighted to help.

From outside London: 0845 045 0111
 From London: 020 7749 8504
 Email: support@sharescope.co.uk