

ShareScope Training Zone

Your guide to getting the best out of ShareScope

Tutorial 24 - Training Mode

Training Mode gives you the opportunity to test your personal investment strategies and various analytics on ShareScope's historical graphs.

In this mode, ShareScope will pick a share at random from the current list and conceal the share's name and the price line. You can add analytic tools to the blank chart and set markers to gradually reveal the price movement. In this way, you can test your theories and ability to predict future price movements.

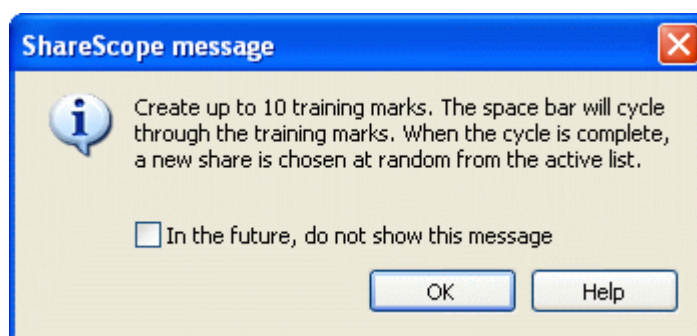
To begin, you will first need to select a base list – in other words the list from which Training Mode randomly selects from. This may be important if your strategy only applies to particular instruments, for example FOREX.

Once you have selected a list, click on the Graph toolbar button or press the Enter key to cycle to the graph screen.

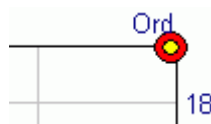
To open Training Mode, right click in the middle of the screen to access the context menu. Near the bottom of the list, you will see **Training Mode** (Gold) or **Alternative modes > Training Mode** (Plus/Pro).



The following dialog may appear. You can choose to hide this the next time you start Training Mode by ticking the box on the dialog before clicking on OK.



When you are in Training Mode a red/yellow marker will appear at the top of the graph.



Click on the red/yellow marker and drag the red marker to the left. This will determine how much of the price data is initially hidden (and then revealed). Repeat this process to add more markers (up to ten) as in the example below:

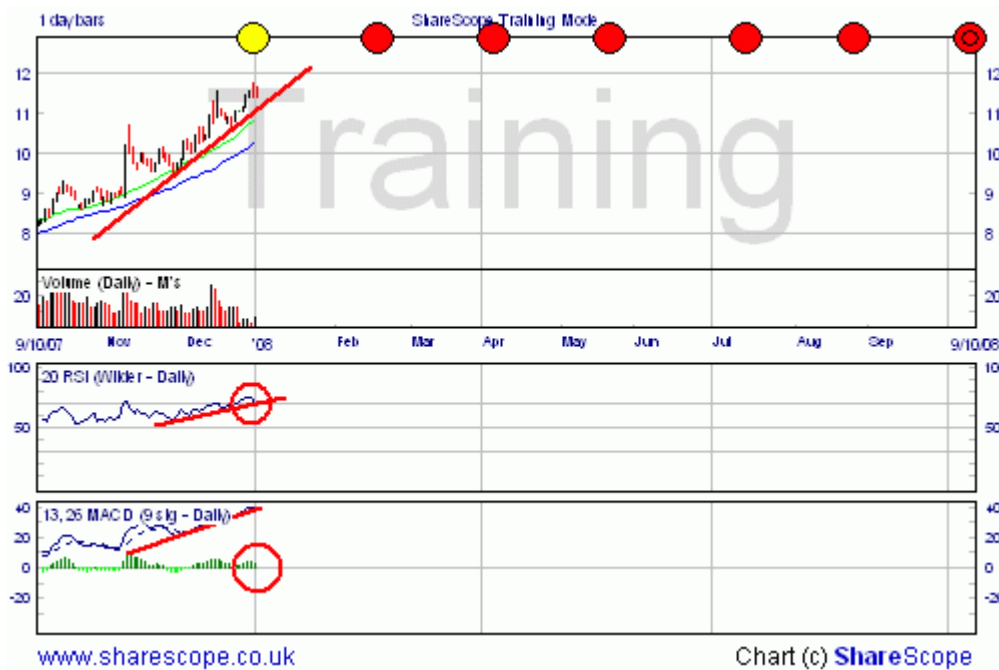


Once your markers and analytics are set up, press the Space bar to start the Training Mode. Your graph will now only be revealed up to the first marker (the yellow one) and the rest of the graph will be hidden. Note also that the share name and Epic has now also been concealed.

Note: there is a slight disadvantage here in that you will have seen the general shape of the graph before starting Training Mode. You may prefer to spacebar through the first graph and onto the next instrument – where only the first portion of the graph will be displayed.



Using the tools available on the graph you can analyse the price and indicator movements to try anticipate the next price movement.



To illustrate the Training Mode in practice, let's revisit our last tutorial on the [MACD and RSI](#).

Above we can see a bullish price chart trading above the 20-day and 40-day moving average. Support is also offered by our own trend line. Now take a look at the indicators. The RSI has moved into overbought territory and a MACD has started falling below the signal line – suggestive of an imminent price reversal.

Let's reveal the next section to see what happened next. To reveal the next section, press the Space bar.

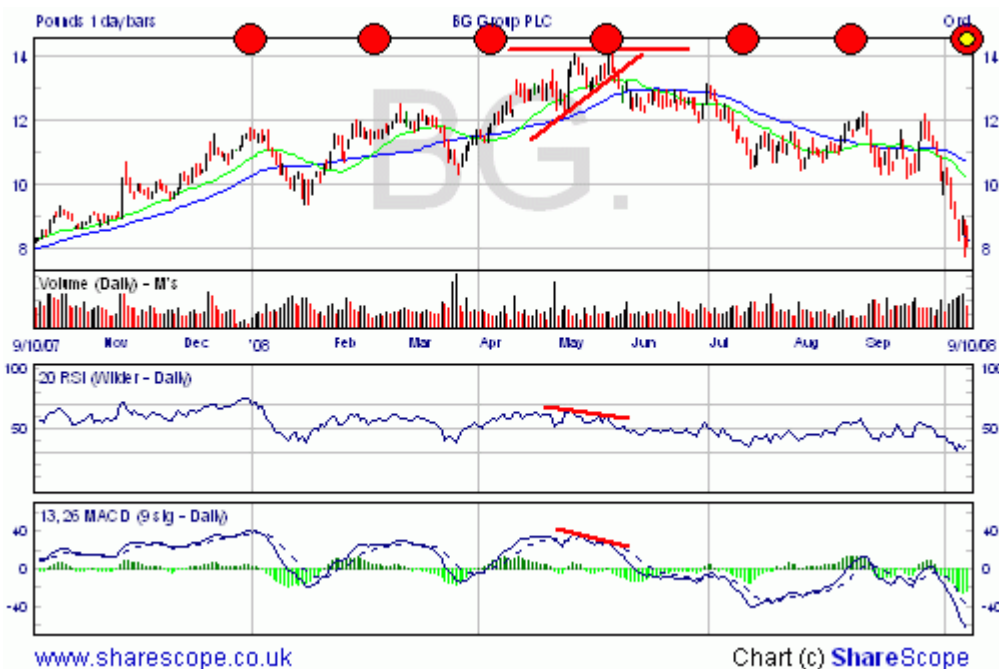
As we can see, shortly after our analysis, the price falls some 20% - passing through both moving averages. The correction is confirmed as the RSI moves back into neutral territory and the MACD falls way below the signal line.



Further on, we can identify a triangle formation and bearish divergence on the MACD and RSI, suggesting a price breakout on the negative side. Again we can press the space bar to reveal more data.



Once the whole price graph is visible, the share's name will be displayed at the top.



Training Mode enables you to "paper-trade" using different techniques, recording your entry levels, stop losses, exit levels and profit/loss.

To begin again on a new share, press the Space bar.

To exit training mode, press the Esc key or deselect the option from the Graph screen context menu.

Remember, if you have any trouble finding or using any of these features, please don't hesitate to call our Customer Support team. They will be delighted to help.

From outside London: 0845 045 0111
 From London: 020 7749 8504
 Email: support@sharescope.co.uk